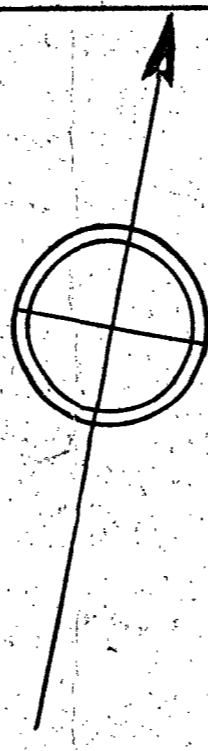
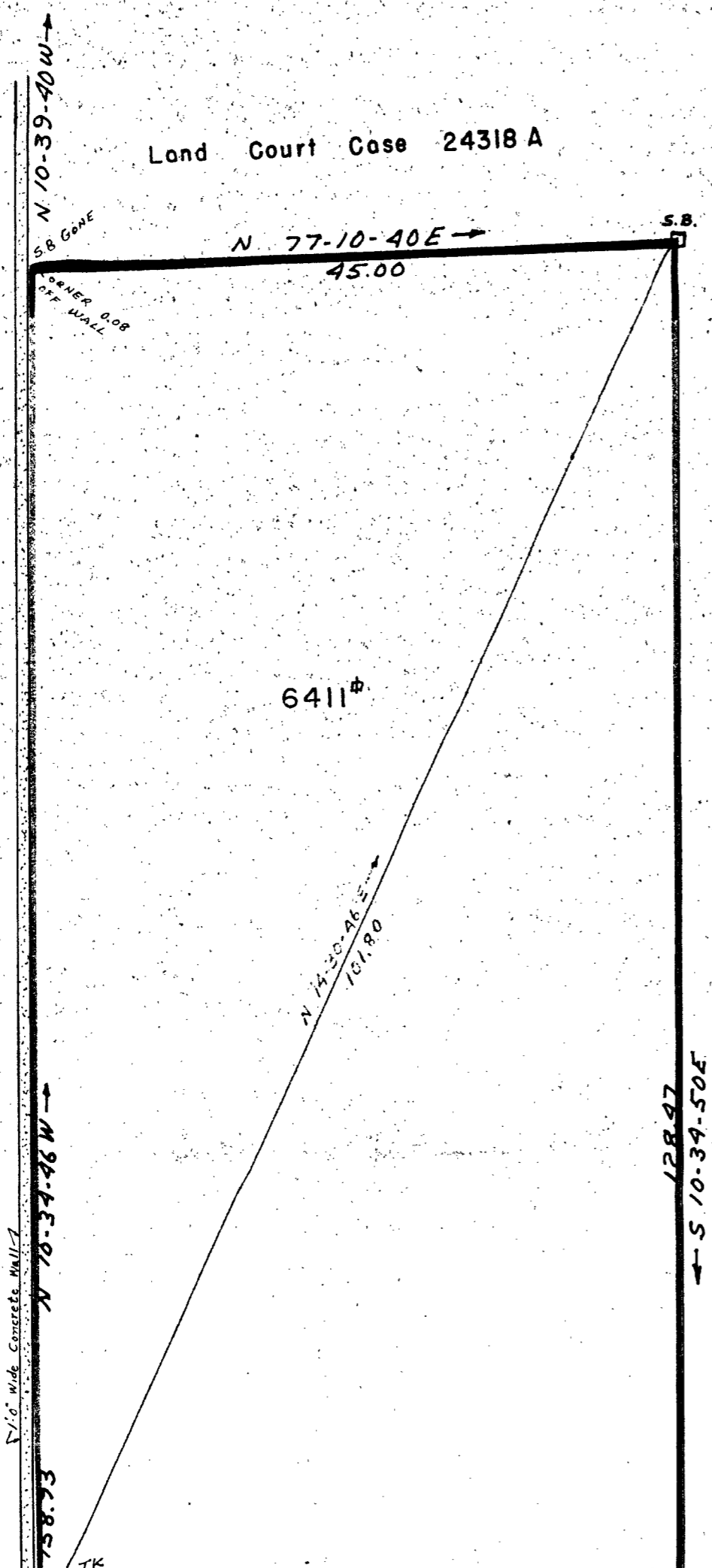


Gulf Oil Corp



BEARING	DISTANCE	LOT LINE CLOSURE			
		N	S	E	W
N 77-10-40E	45.00	9.79		43.88	
S 10-34-50E	128.47		126.29	23.59	
S 43-47-58W	55.32		39.93		38.29
N 10-34-46W	158.93	156.23			29.18
	TOTALS		166.22		67.47

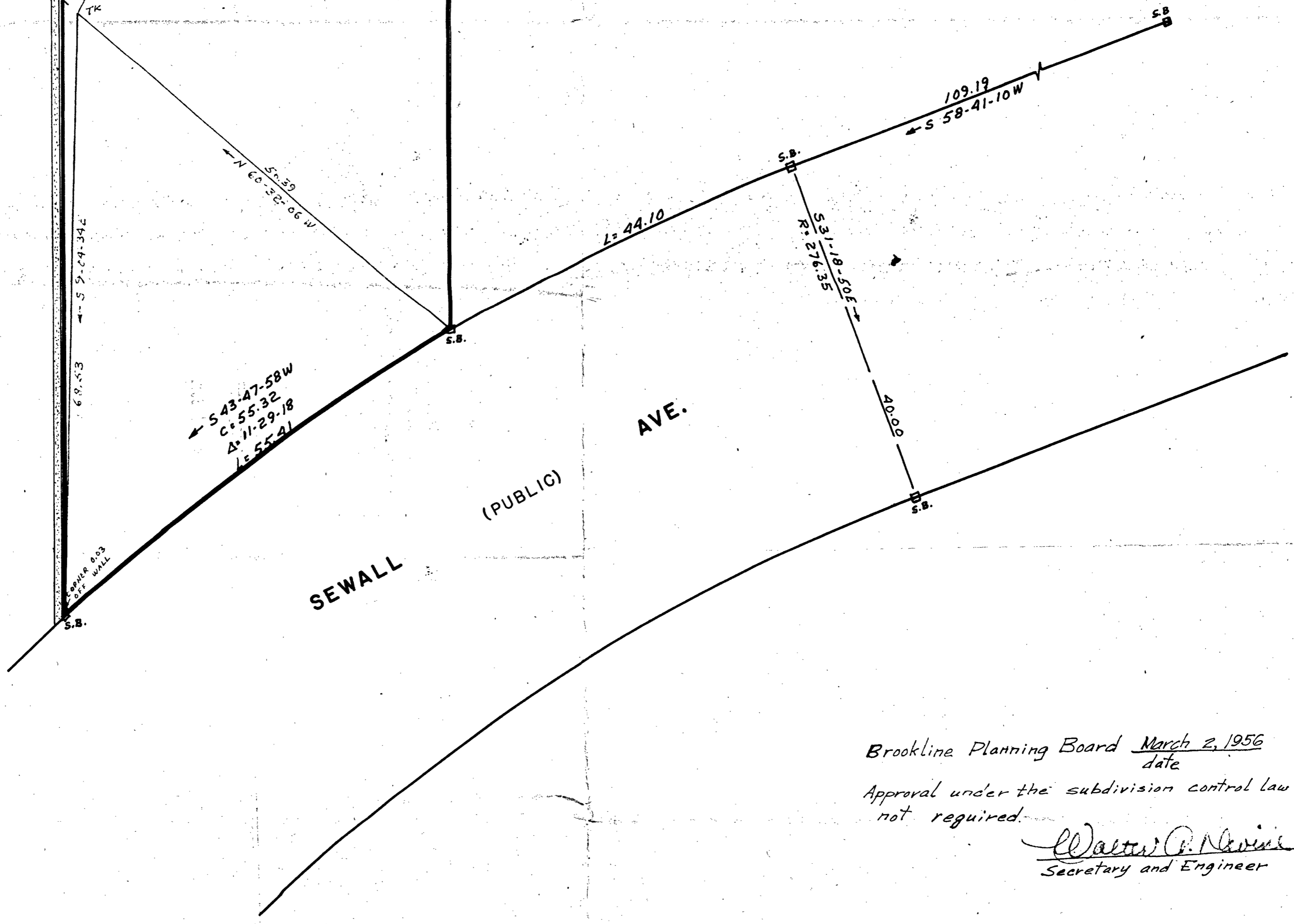
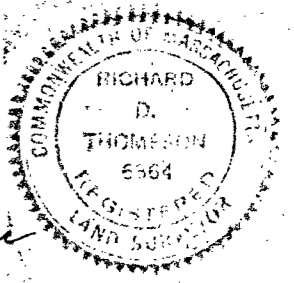
PLAN OF LAND
IN
BROOKLINE MASS.

SCALE 1 IN = 10 FT. FEB. 15, 1956
EVERETT M. BROOKS CO. CIVIL ENGRS
NEWTONVILLE MASS.

I certify that this survey was made on
the ground in accordance with the Land Court
Instructions of 1950 on Feb. 13, 1956.

Date Feb. 15, 1956

Richard D. Thompson
Surveyor
259 Walnut St. Newtonville



Brookline Planning Board March 2, 1956
date
Approval under the subdivision control law
not required.
Walter C. Nevins
Secretary and Engineer