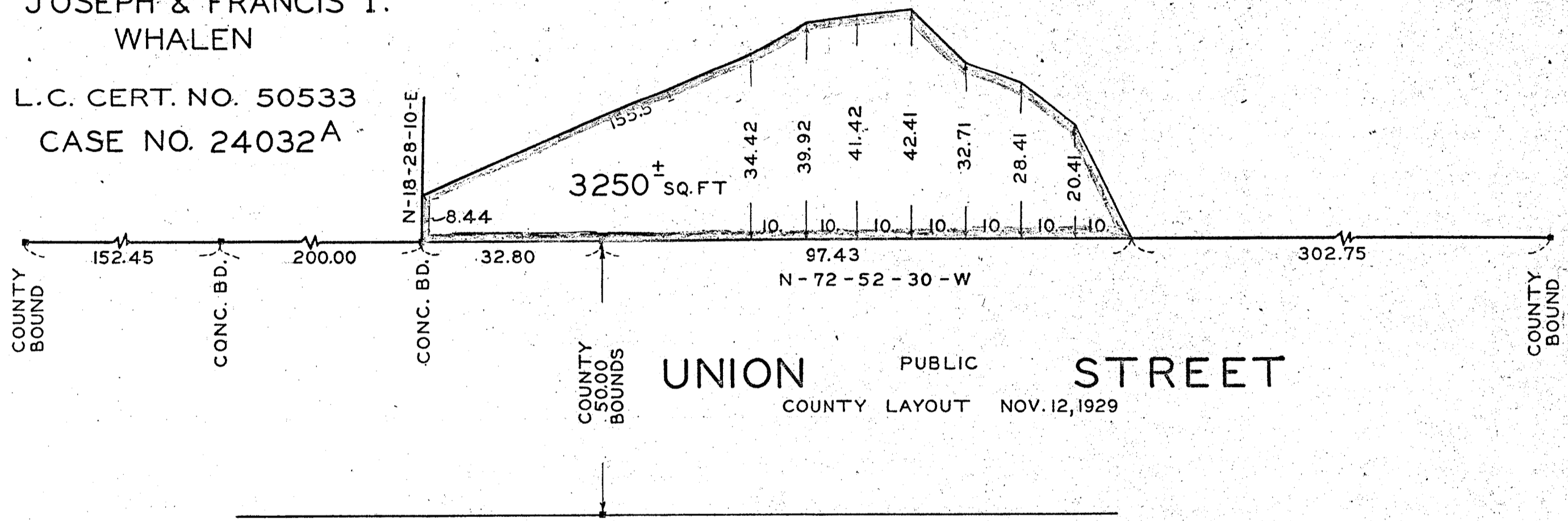


HEWLETT & MARY S. CAMERON
L.C. CERT. NO. 8908
CASE NO. 10157^A

JOSEPH & FRANCIS I.
WHALEN
L.C. CERT. NO. 50533
CASE NO. 24032^A



PLAN OF LAND HOLBROOK MASS.

MARCH 2, 1956

SCALE: 20 FEET TO THE INCH

ALFRED J. HOGAN
CIVIL ENGINEER
RANDOLPH, MASS.

APPROVAL UNDER SUBDIVISION
CONTROL LAW NOT REQUIRED
FILE NO. 9879104 1956
James M. Healy CHAIRMAN
James M. Healy CLERK

Shirley C. Stevens
HOLBROOK PLANNING BOARD

I CERTIFY THAT THIS ACTUAL SURVEY WAS MADE
ON THE GROUND IN ACCORDANCE WITH THE LAND
COURT INSTRUCTIONS OF 1950 ON MARCH 2, 1956.

Alfred J. Hogan C.E.
7 UPHAM ST. RANDOLPH MASS.