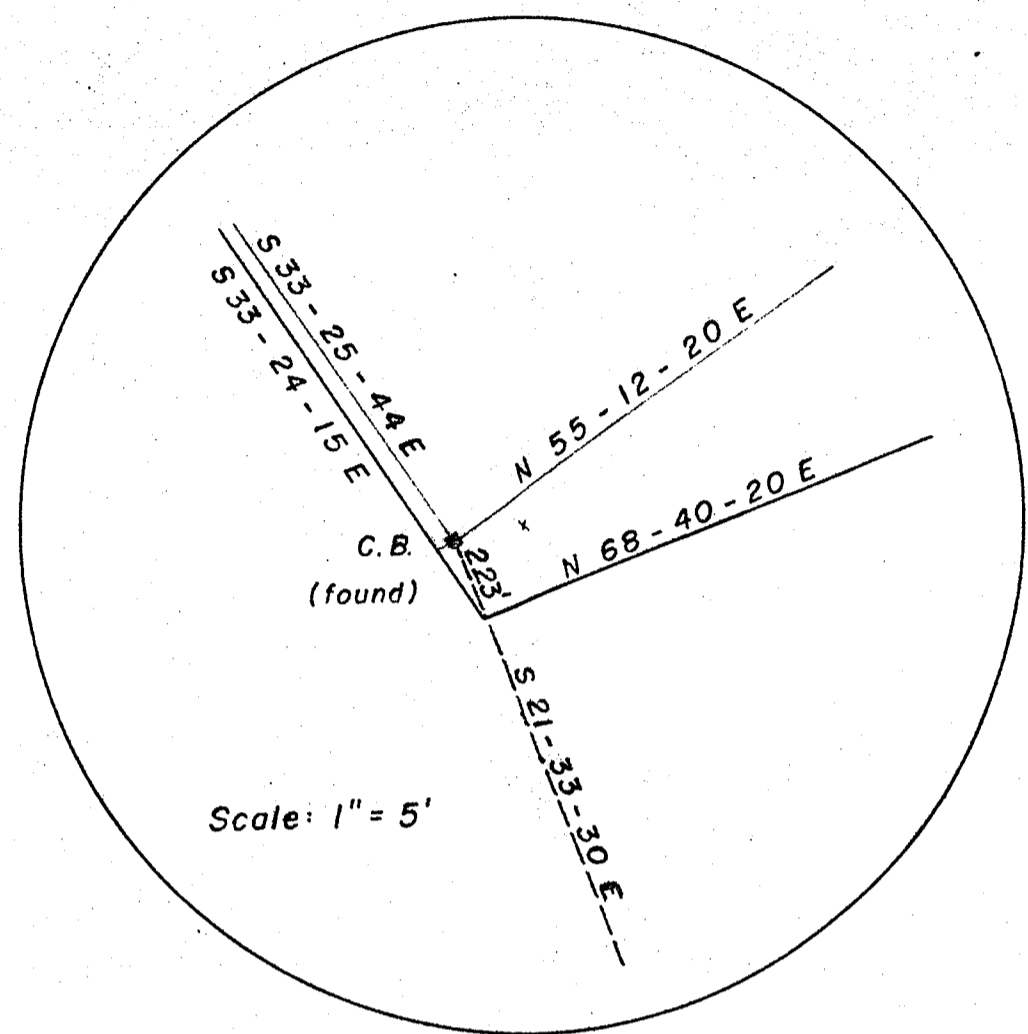
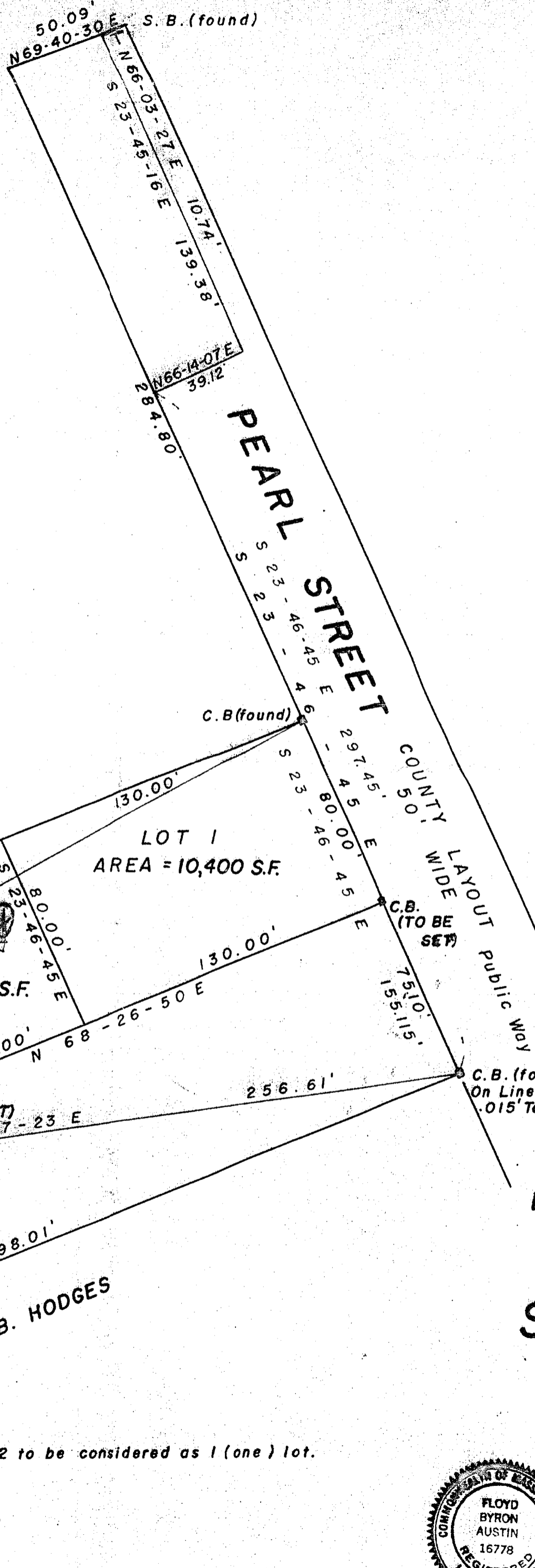


26483B

26483B



INSERT



PLANNING BOARD APPROVAL NOT REQUIRED  
 UNDER SUBDIVISION CONTROL LAW.  
 DATE JUNE 16, 1967

Edmund W. Atkinson  
 STOUGHTON PLANNING BOARD ENGINEER

I CERTIFY THAT THIS ACTUAL SURVEY WAS MADE  
 ON THE GROUND IN ACCORDANCE WITH THE LAND  
 COURT INSTRUCTIONS OF 1959 BETWEEN MAY 17, 1967  
 AND JUN. 5, 1965.

Date June 13, 1967  
 Surveyor Floyd B. Austin

LAND COURT PLAN NO. 26483B  
 PLAN OF LAND  
 IN

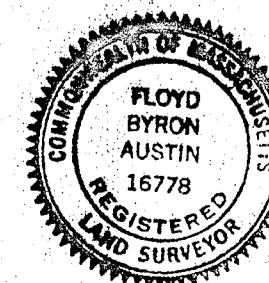
STOUGHTON, MASS.

Petitioner  
**ARTHUR & ANNETTE C. DIXON**

Scale 1" = 40' JUNE 13, 1967

AUSTIN ENGINEERING CO.  
 550 BAY ROAD  
 STOUGHTON, MASS.

#26483B



*dist. show this way*

26483B

26483B

PLAN OF LAND IN  
STOUGHTON

NORFOLK COUNTY, MASS.

SCALE: 1" = 40' JAN. 17, 1956

THE SCHUYLER CLAPP COMPANY  
BRAINTREE, MASS.

I CERTIFY THAT THIS ACTUAL SURVEY WAS  
MADE ON THE GROUND IN ACCORDANCE  
WITH THE LAND COURT INSTRUCTIONS  
OF 1950 ON DEC. 26, 1955.  
JAN. 17, 1956  
CLASS "B" *Frederick T. Webb*

APPROVAL UNDER THE SUBDIVISION CONTROL  
LAW NOT REQUIRED. \_\_\_\_\_ 1956

STOUGHTON PLANNING BOARD

