

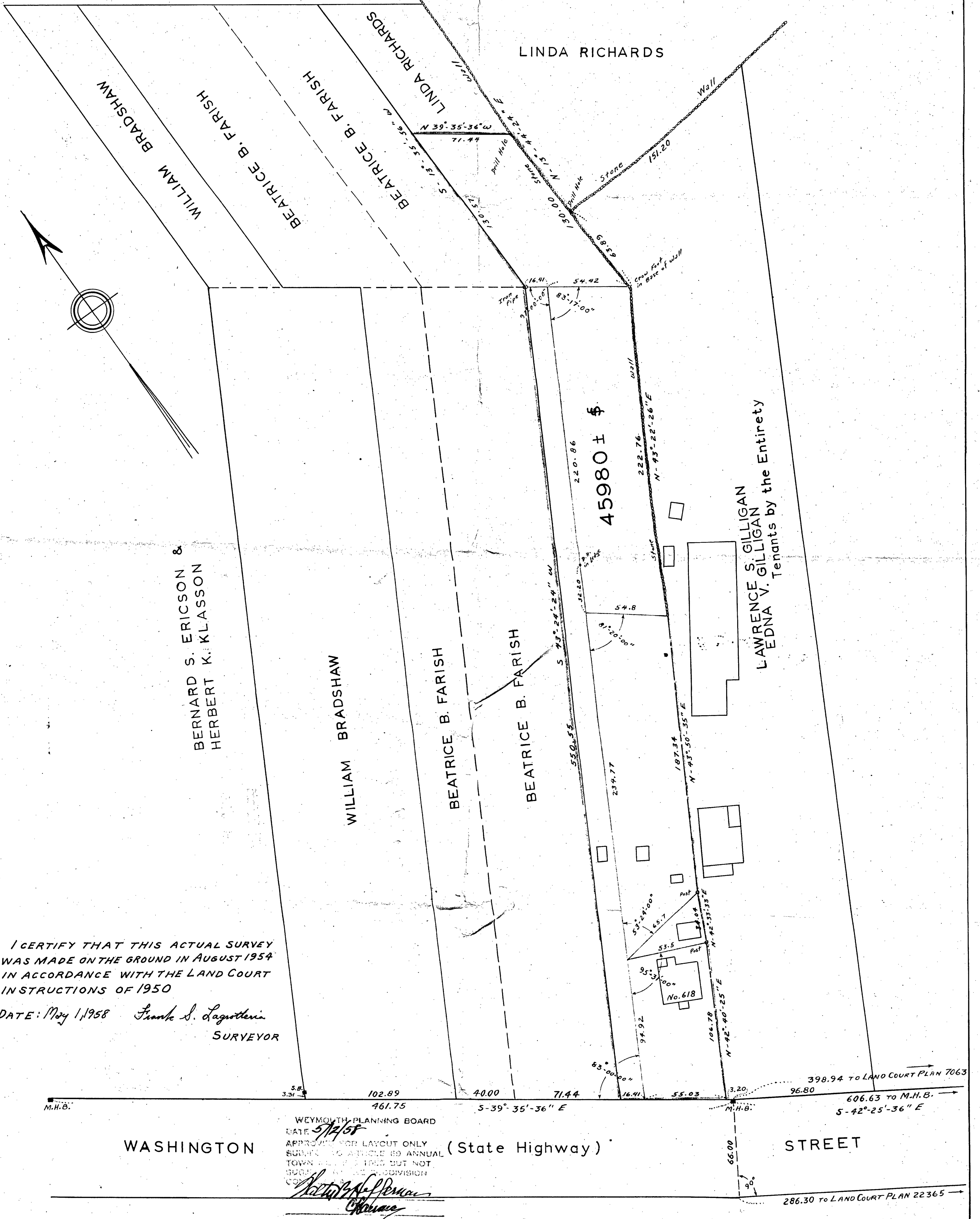
PLAN OF LAND IN WEYMOUTH, MASS.

SCALE: 1" = 40'

MAY 1, 1958

FRANK S. LAGROTTERIA, CIVIL ENGINEER  
NORTH COHASSET, MASS.

BERNARD S. ERICSON &  
HERBERT K. KLASSON



I CERTIFY THAT THIS ACTUAL SURVEY  
WAS MADE ON THE GROUND IN AUGUST 1954  
IN ACCORDANCE WITH THE LAND COURT  
INSTRUCTIONS OF 1950

DATE: May 1, 1958 *Frank S. Lagrotteria*  
SURVEYOR

WEYMOUTH PLANNING BOARD  
DATE *5/12/58*  
APPROVED FOR LAYOUT ONLY  
SUBJECT TO ARTICLE 80 ANNUAL  
TOWN MEETING 1958 BUT NOT  
SUBJECT TO THE DIVISION  
COMMISSION

WASHINGTON

(State Highway)

STREET

286.30 TO LAND COURT PLAN 22365