

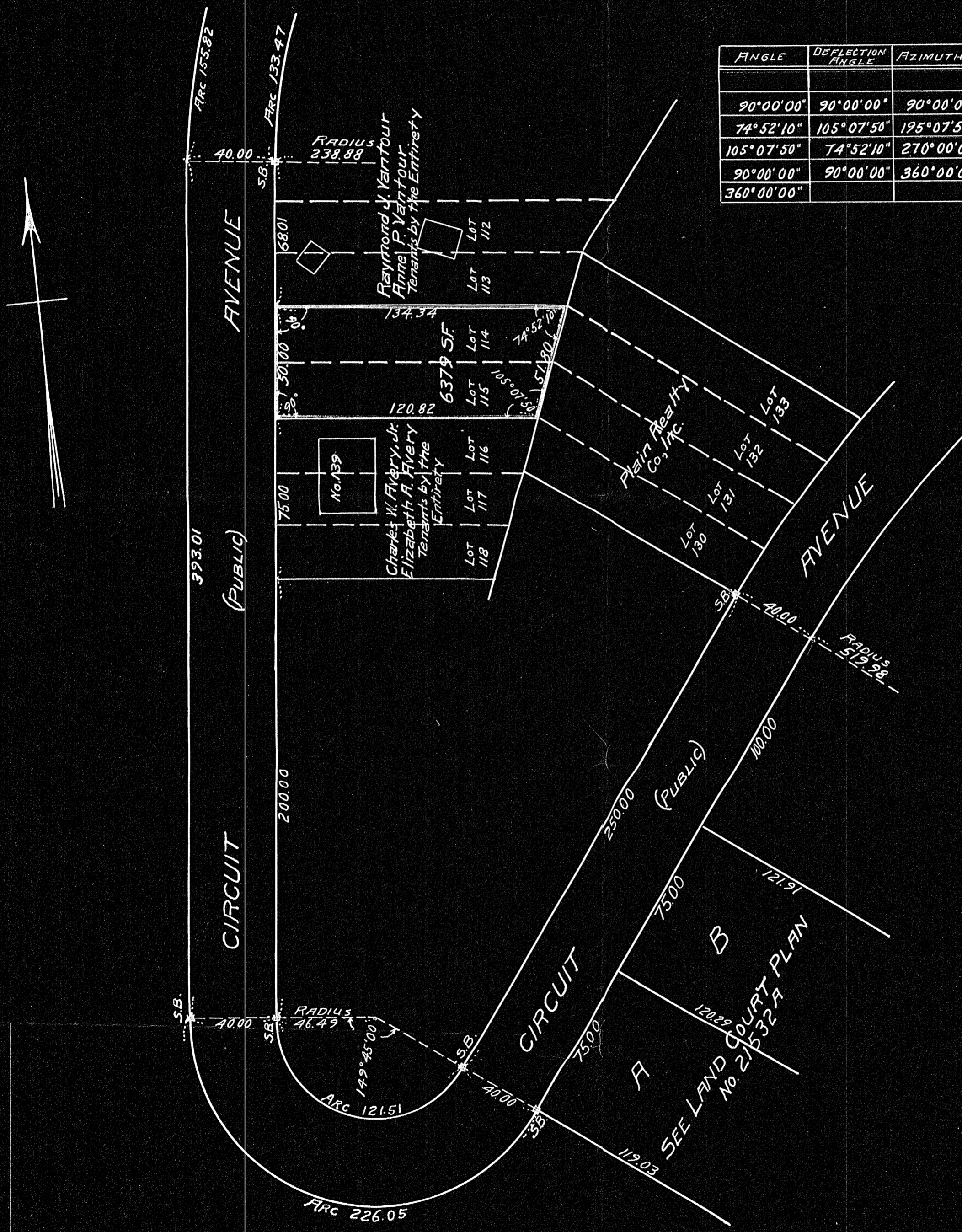
# PLAN OF LAND IN WEYMOUTH, MASS.

SCALE: 1" = 40'      JAN. 26, 1956

RUSSELL H. WHITING  
REGISTERED PROFESSIONAL ENGINEER  
NORTH WEYMOUTH, MASS.

SEE PLAN OF "CENTERHAVEN" DATED SEPTEMBER 27, 1926  
RECORDED NORFOLK REGISTRY 1738-65

ANGLE	DEFLECTION ANGLE	AZIMUTH	DISTANCE	+SINE	-SINE	+COSINE	-COSINE
			50.00	50.00			
90°00'00"	90°00'00"	90°00'00"	134.34			134.34	
74°52'10"	105°07'50"	195°07'50"	51.80		50.00		13.52
105°07'50"	74°52'10"	270°00'00"	120.82				120.82
90°00'00"	90°00'00"	360°00'00"					
360°00'00"				50.00	50.00	134.34	134.34



I CERTIFY THAT THIS ACTUAL SURVEY WAS MADE  
ON THE GROUND JAN. 26, 1956 IN ACCORDANCE WITH  
THE LAND COURT INSTRUCTIONS OF 1950

DATE: January 26, 1956

Russell H. Whiting

SURVEYOR