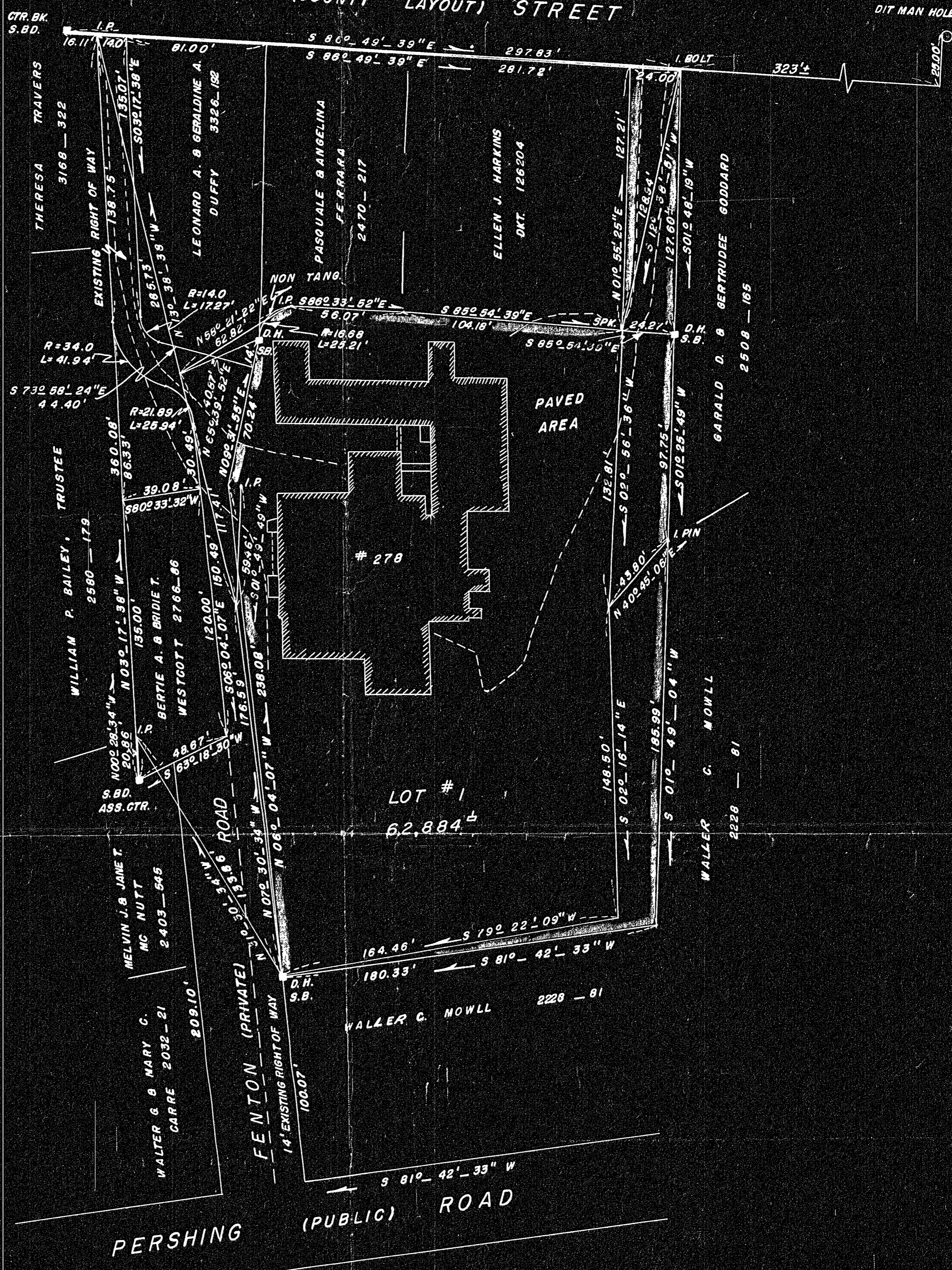
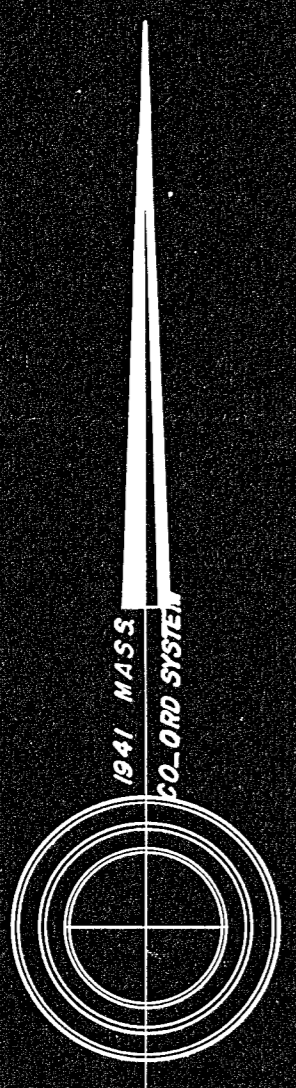


TOWN OF NEEDHAM
ENG. DEPT.
DIT MAN HOLE RIM

WEST (COUNTY LAYOUT) STREET



PLAN REF:
BK. 1107 PG. 112
JL 1202 JL 97
JL 1774 JL 376
JL 3000 JL 240
PLAN #4542 PLAN BK #93
NORFOLK REGISTRY OF DEEDS.

APPROVAL UNDER THE SUB-DIVISION
CONTROL LAW NOT REQUIRED.

NEEDHAM PLANNING BOARD

George M. Hale

Henry V. Perry

Edwin M. Wainwright

DATE: Nov. 15 1955

PLAN OF LAND IN NEEDHAM, MASS.

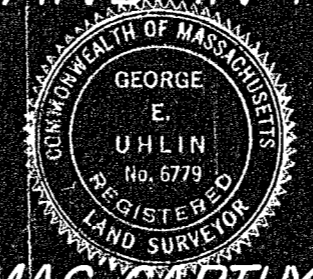
OWNED BY: STANDARD BRANDS INC.

SCALE: 1" = 40'

NOVEMBER 1, 1955

SURVEY BY: MAC CARTHY ENGINEERING SERVICE INC.

NATICK, MASS.



DEED PLAN
Order
Traverse No
Area
Dr. No.
Map No.
Instrument No.
Approved

#26433
MAY 1956
FILED
2-17-56 R.C.C.
Date By
Town NO 4
Needham Pl. 4.

I CERTIFY THAT THIS ACTUAL SURVEY WAS MADE ON THE GROUND
IN ACCORDANCE WITH THE LAND COURT INSTRUCTIONS OF 1960 ON OR
BETWEEN 9/12/55 AND 9/26/55

11/7/55
DATE

George E. Uhlin
20 WASHINGTON ST. NATICK, MASS.