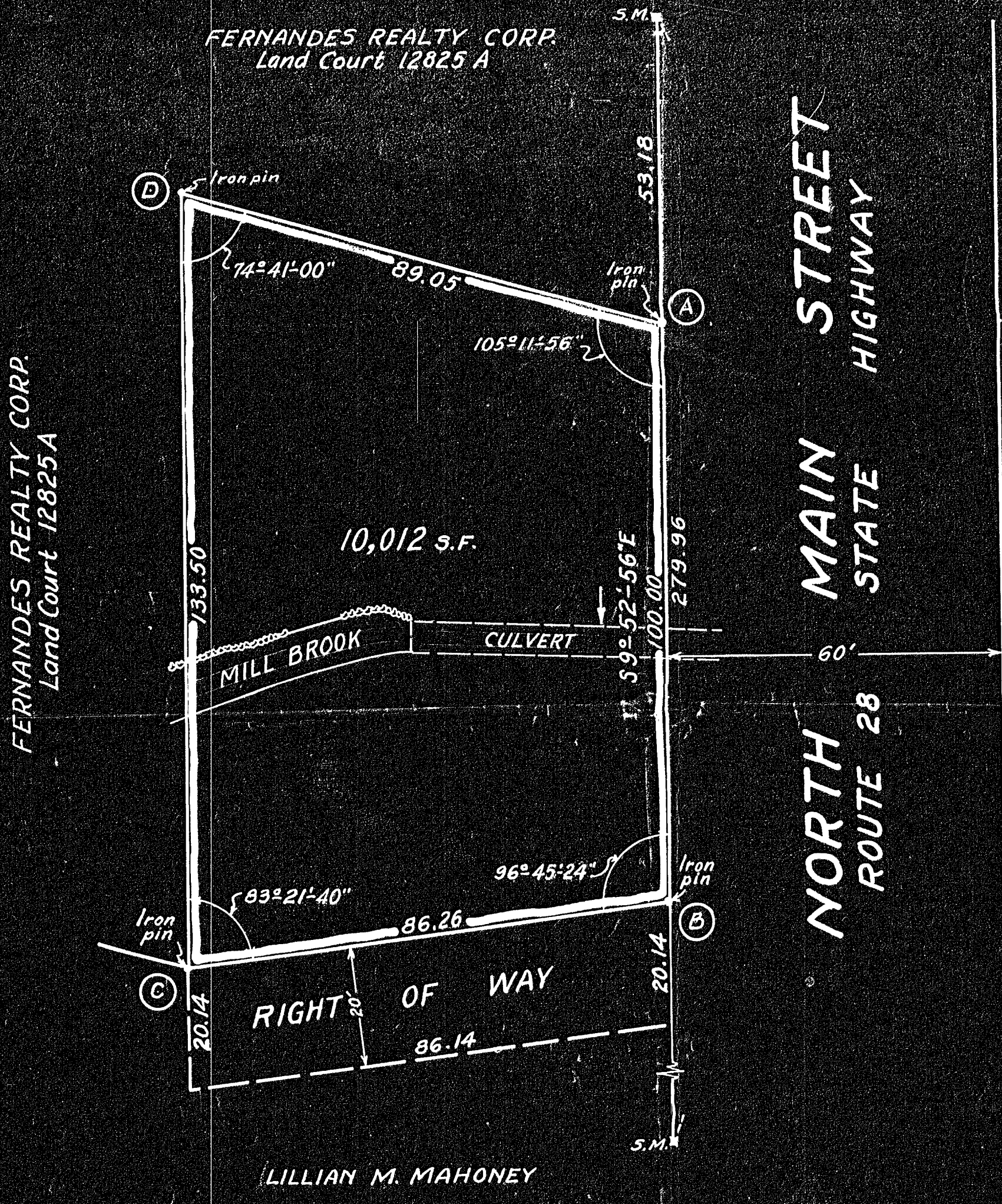


STA	INT. ANGLE	DEF. ANGLE	BEARING	DISTANCE	LATITUDE		DEPARTURE			
					N	S	E	W	S	W
A	105°11'56"	74°48'04"	S 92°52'56" E	100.00		98.52	17.16		206.77	94.17
B	96°45'24"	83°14'36"	S 73°21'40" W	86.26		24.70		82.65	231.47	176.82
C	83°21'40"	96°38'20"	N 10°00'00" W	133.50	131.47			23.18	100.00	200.00
D	74°41'00"	105°19'00"	S 84°41'00" E	89.05		8.25	88.67		108.25	111.33
					131.47	131.47	105.83	105.83		



We certify that this actual survey was made on the ground in accordance with the Land Court Instructions of 1950 on or between December 14, 1954 and January 9, 1956

Henry F. Bryant & Son, Inc. by *R. H. Jones*  
Engineer

*26402*

MAY BE FILED  
2-7-56 JWC  
Date By  
No 4  
1 Bd.  
Tie to 12825  
NO. 27

Approval not required under the Sub-Division Control Act of the Planning Board.

*Leo J. O'Neill*  
*Joseph W. Curran*  
*Paul Peterson*

Planning Board approval not required under the Sub-Division Control Law.  
Date: Jan 20, 1956

Randolph Planning Board

PLAN OF LAND  
IN  
RANDOLPH - MASS.

Scale: 1 in. = 20 ft.  
January 9, 1956

Henry F. Bryant & Son, Inc.  
Engineers. Brookline, Mass.