

PLAN OF LAND IN  
WEYMOUTH, NORFOLK COUNTY, MASS.

SCALE: 1" = 40'

OCTOBER 4, 1955

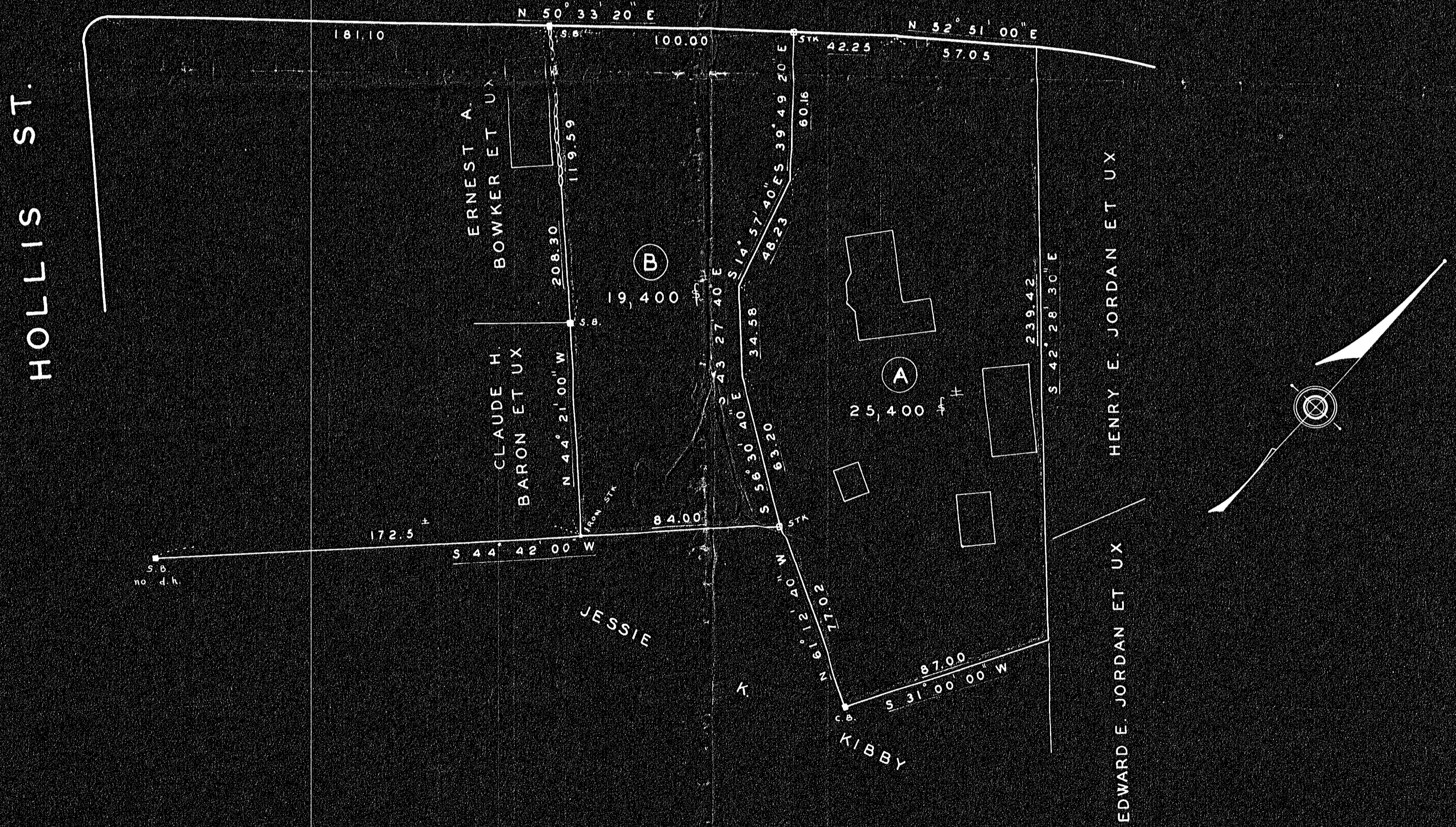
THE SCHUYLER CLAPP CO.  
BRAintree, MASS.



I CERTIFY THAT THIS  
ACTUAL SURVEY WAS MADE ON THE  
GROUND ON AUGUST 15, 1955, AND  
IS IN ACCORDANCE WITH THE  
LAND COURT INSTRUCTIONS  
OF 1950.

*Frederick T. Webb*  
REGISTERED LAND SURVEYOR

RANDOLPH (PUBLIC) STREET



APPROVAL UNDER THE SUBDIVISION  
CONTROL LAW NOT REQUIRED.

December 9, 1955  
*John T. Winter, Jr.*

TOWN OF WEYMOUTH PLANNING BOARD

26385  
2-3-56  
Date By: EDE  
width Randolph St.  
Weymouth #48