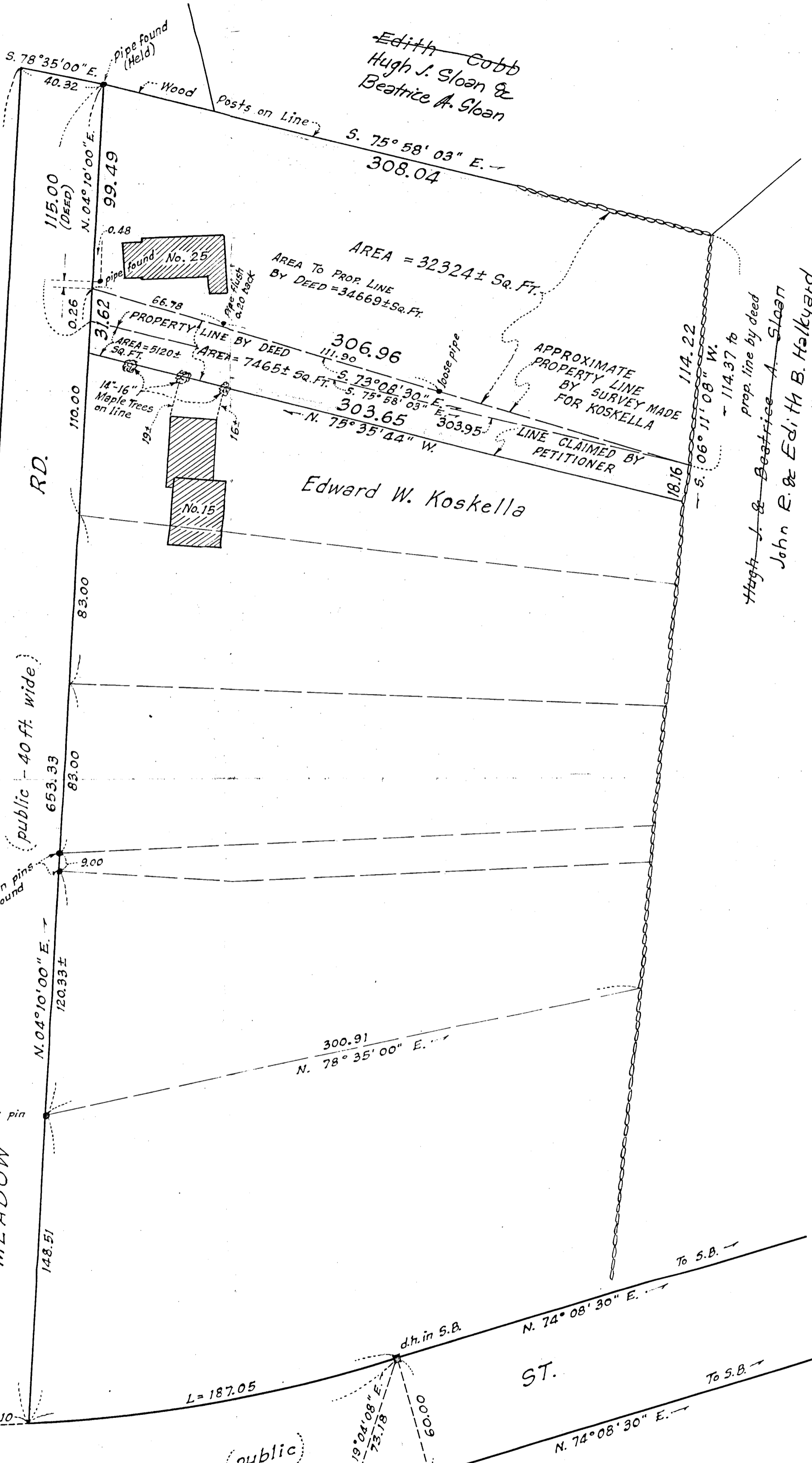
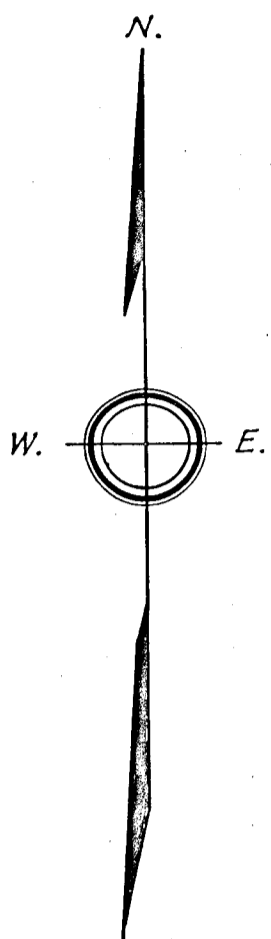


David L. Statham

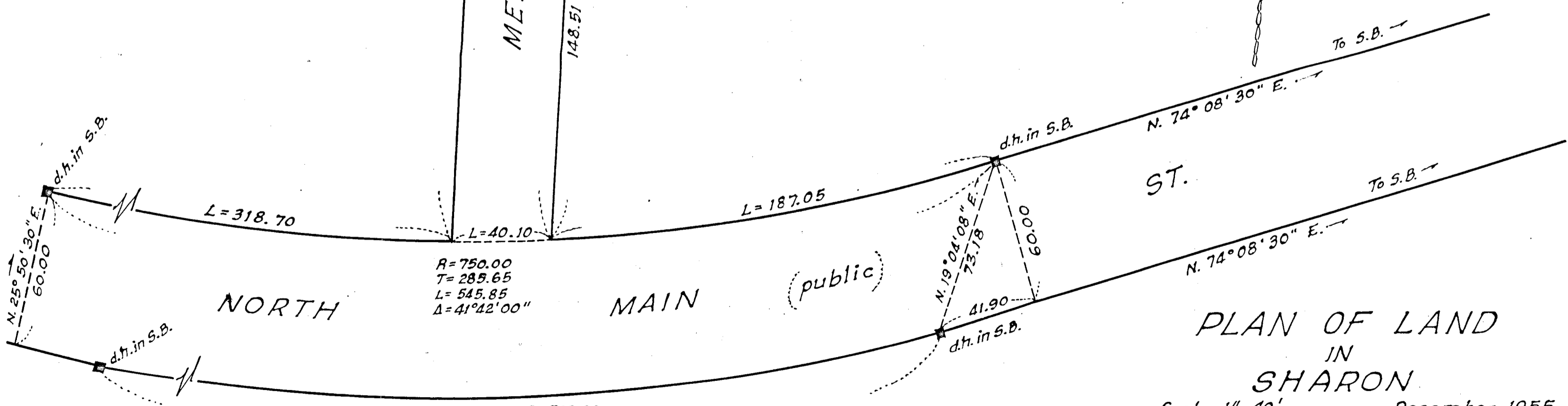


Edith Cobb
Hugh J. Sloan &
Beatrice A. Sloan

Edward W. Koskella

John E. & Edith B. Halkyard.

NOTE: 2 S.B.'s to be set.



PLAN OF LAND
IN
SHARON
Scale: 1"=40' December 1955
James G. Noonan, Surveyor
47 Courtney Rd.
W. Roxbury, Mass.

I certify that this actual survey was made on the ground on November 20, 1955 in accordance with Land Court Instructions of 1950.
James G. Noonan Surveyor Jan. 2, 1956

R= 700.00
T= 266.60
L= 509.46
A= 41°42'00"

R= 750.00
T= 285.65
L= 545.85
A= 41°42'00"