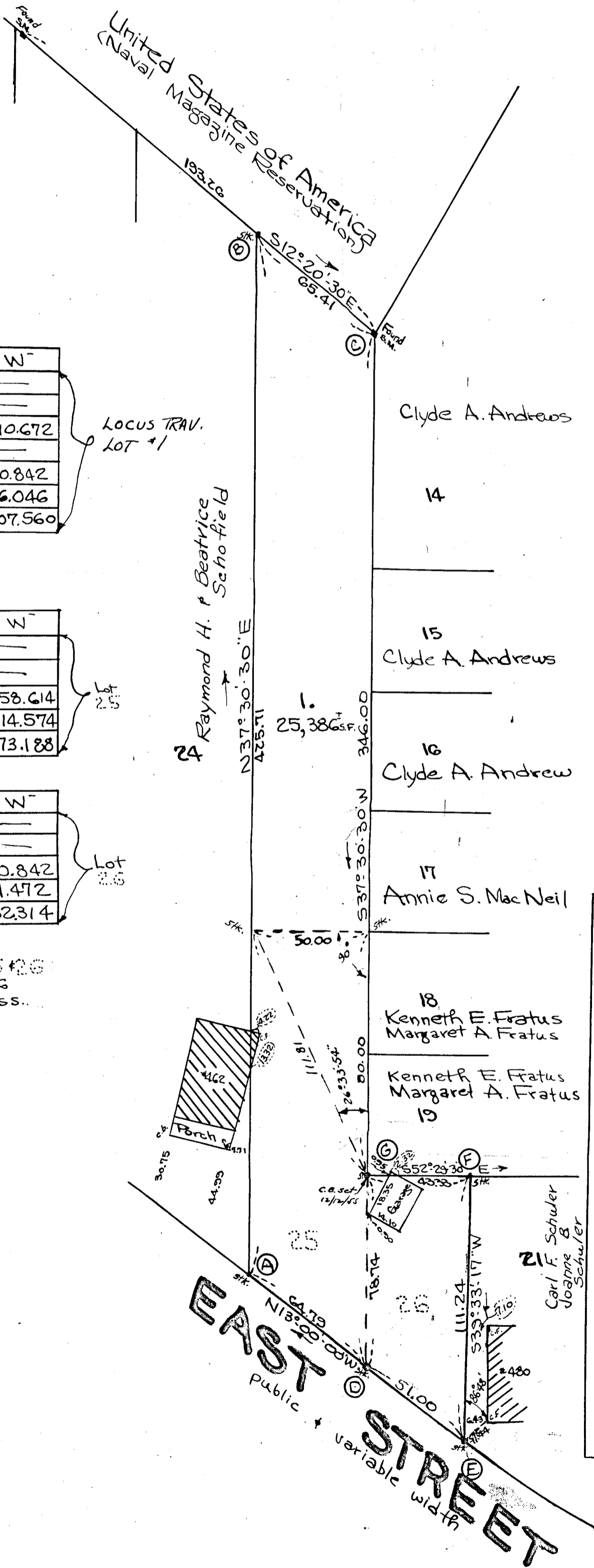
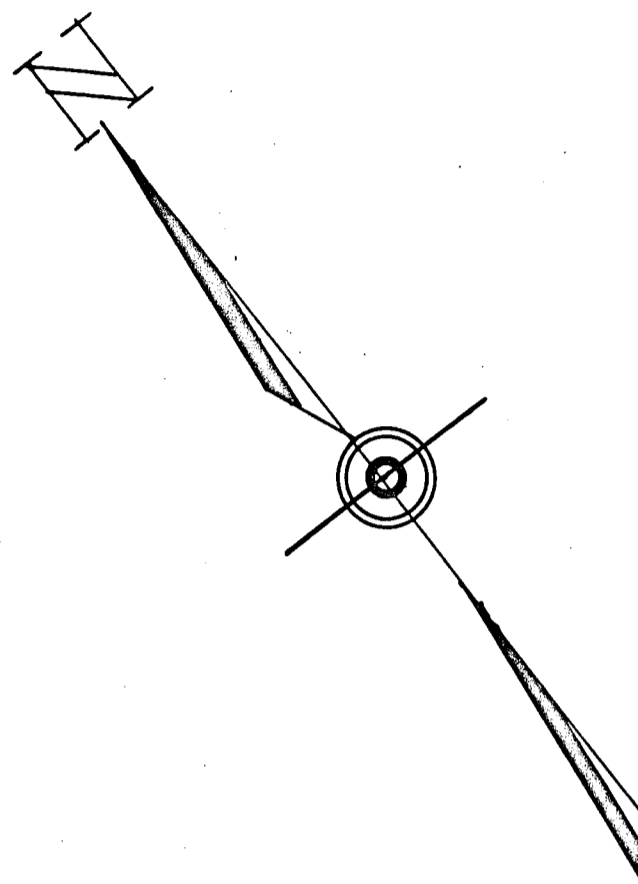


PLAN OF LAND WEYMOUTH, MASS..

Scale 1"=40' Dec. 5, 1955

L. W. DeCelle Surveyors, Inc.
Bonded Land Surveyors
1191 North Main St., Randolph



Sta.	Bearing	Distance	N ⁺	S ⁻	E ⁺	W ⁻
A-B	N37°30'30"E	425.71	337.700	—	259.204	—
B-C	S12°20'30"E	65.41	—	63.898	13.980	—
C-G	S37°30'30"W	346.00	—	274.470	—	210.672
G-F	S52°29'30"E	43.33	—	26.382	34.372	—
F-E	S39°33'17"W	111.24	—	85.771	—	70.842
E-A	N13°00'00"W	115.79	112.821	—	—	26.046
Totals			450.521	450.521	307.556	307.560

Locus TRAV. LOT #1

Clyde A. Andrews

14

I certify that this survey was made on the ground in accordance with the Land Court Instruction of 1950 on November 3 & 4, 1955 November 25, 1955 Lawrence W. DeCelle, Surveyor

Sta.	Bearing	Distance	N ⁺	S ⁻	E ⁺	W ⁻
A-B	N37°30'30"E	425.71	337.700	—	259.204	—
B-C	S12°20'30"E	65.41	—	63.898	13.980	—
C-D	S37°30'30"W	424.74	—	336.931	—	258.614
D-E	N13°00'00"W	64.79	63.129	—	—	14.574
Total			400.829	400.829	273.184	273.188

Lot 2.5

Clyde A. Andrews

15

Clyde A. Andrew

Sta.	Bearing	Distance	N ⁺	S ⁻	E ⁺	W ⁻
D-G	N37°30'30"E	78.74	62.461	—	47.942	—
G-F	S52°29'30"E	43.33	—	26.382	34.372	—
F-E	S39°33'17"W	112.24	—	85.771	—	70.842
E-D	N13°00'00"W	51.00	49.692	—	—	11.472
Total			112.153	112.153	82.314	82.314

Lot 2.5

Annie S. MacNeil

16

Kenneth E. Fratus
Margaret A. Fratus

Kenneth E. Fratus
Margaret A. Fratus

17

Kenneth E. Fratus
Margaret A. Fratus

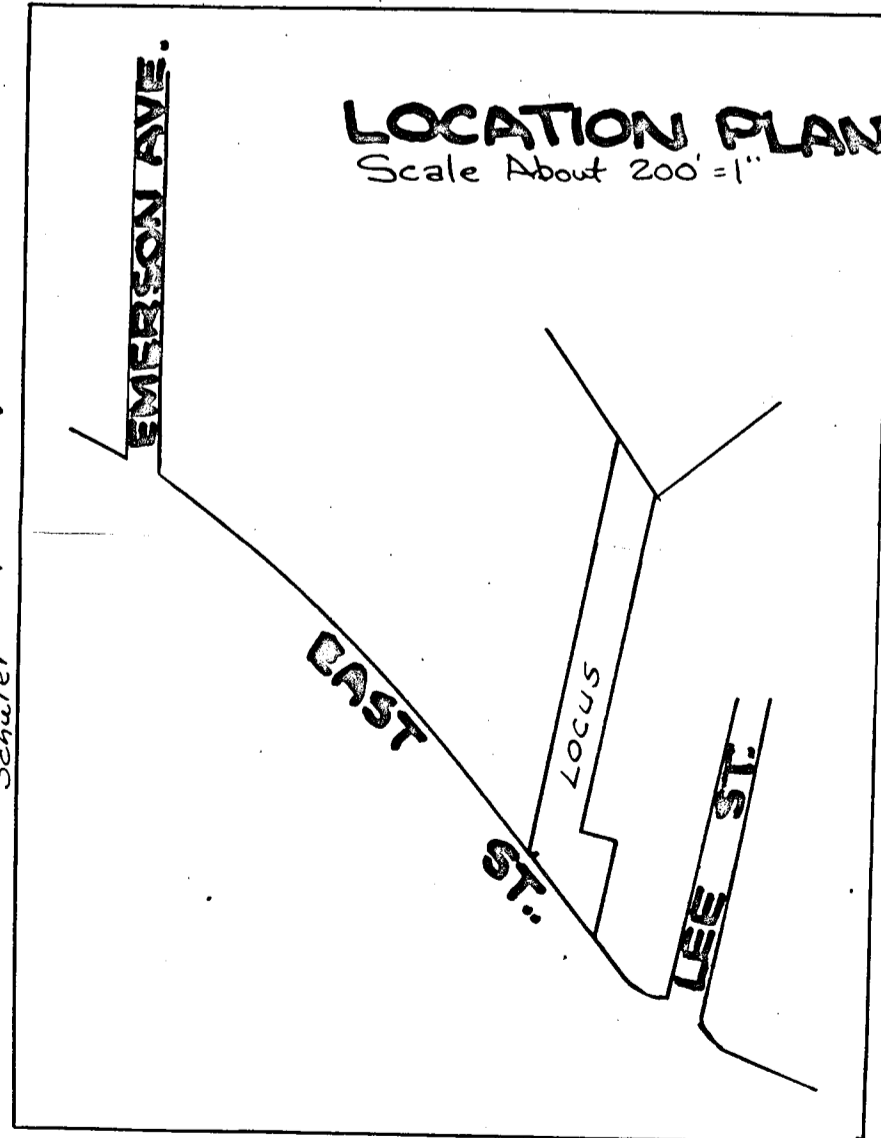
18

Kenneth E. Fratus
Margaret A. Fratus

19

Carl F. Schuler
Joanne & Joanne Schuler

See plan of record "Cottage Farm Annex" Weymouth, Mass.. May 15, 1917 for lots 25 & 26 Recorded July 21, 1917 File No. 4151 P.B.K. 86 Norfolk Registry Deeds, Dedham, Mass..



EAST STREET
public + variable width