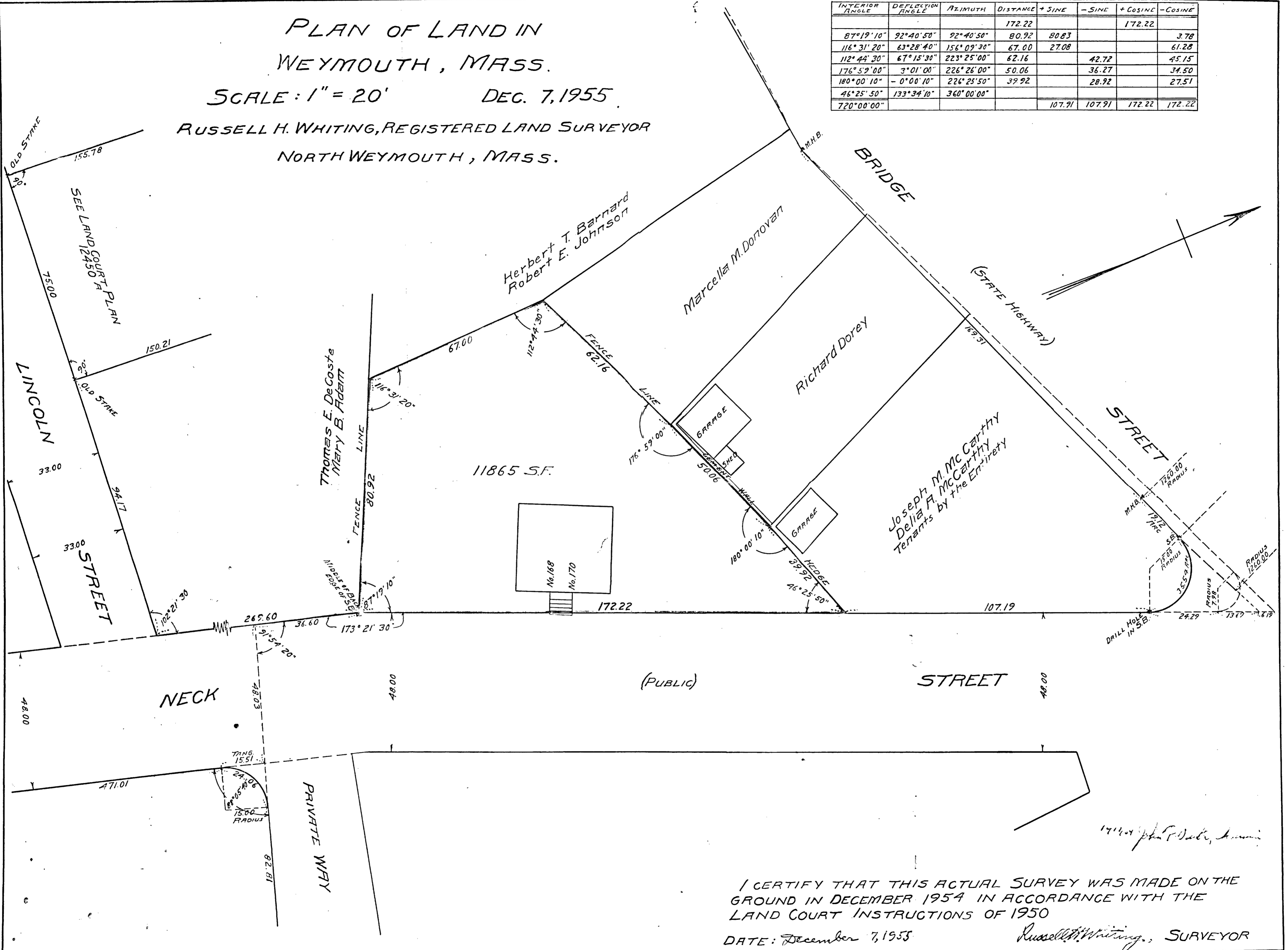


PLAN OF LAND IN WEYMOUTH, MASS.

SCALE: 1" = 20' DEC. 7, 1955

RUSSELL H. WHITING, REGISTERED LAND SURVEYOR
NORTH WEYMOUTH, MASS.

INTERIOR ANGLE	DEFLECTION ANGLE	AZIMUTH	DISTANCE	+ SINE	- SINE	+ COSINE	- COSINE
			172.22			172.22	
87° 19' 10"	92° 40' 50"	92° 40' 50"	80.92	80.83			3.78
116° 31' 20"	63° 28' 40"	156° 09' 30"	67.00	27.08			61.28
112° 44' 30"	67° 15' 30"	223° 25' 00"	62.16		42.72		45.15
176° 59' 00"	3° 01' 00"	226° 26' 00"	50.06		36.27		34.50
180° 00' 10"	- 0° 00' 10"	226° 25' 50"	39.92		28.92		27.51
46° 25' 50"	133° 34' 10"	360° 00' 00"					
720° 00' 00"				107.91	107.91	172.22	172.22



I CERTIFY THAT THIS ACTUAL SURVEY WAS MADE ON THE GROUND IN DECEMBER 1954 IN ACCORDANCE WITH THE LAND COURT INSTRUCTIONS OF 1950

DATE: December 7, 1955

Russell H. Whiting, SURVEYOR

191404 John P. Doble, Assessor