

PLAN OF LAND
 IN
CANTON, NORFOLK CO., MASS.
 SCALE: 1"=20' SEPTEMBER 1, 1955

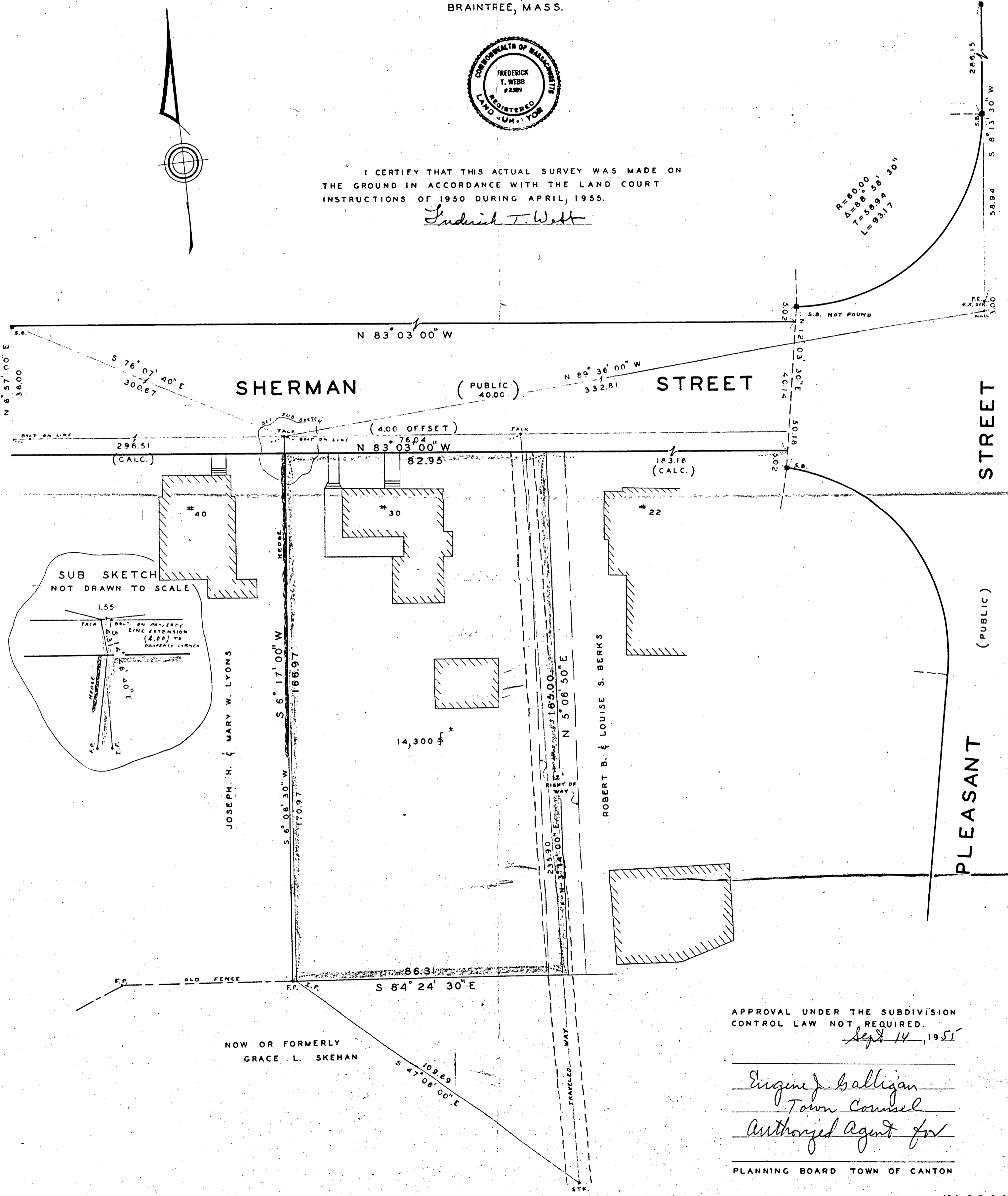
THE SCHUYLER CLAPP CO.
 CIVIL ENGINEERS & SURVEYORS
 BRAintree, MASS.



I CERTIFY THAT THIS ACTUAL SURVEY WAS MADE ON
 THE GROUND IN ACCORDANCE WITH THE LAND COURT
 INSTRUCTIONS OF 1950 DURING APRIL, 1955.

Frederick T. Webb

R=6000
 Δ=98.58'
 T=589.7'
 L=93.17'



APPROVAL UNDER THE SUBDIVISION
 CONTROL LAW NOT REQUIRED.

Sept 14, 1955

Eugene J. Balligan
 Town Counsel
 Authorized Agent for

PLANNING BOARD TOWN OF CANTON

JN 8300
 DFF