

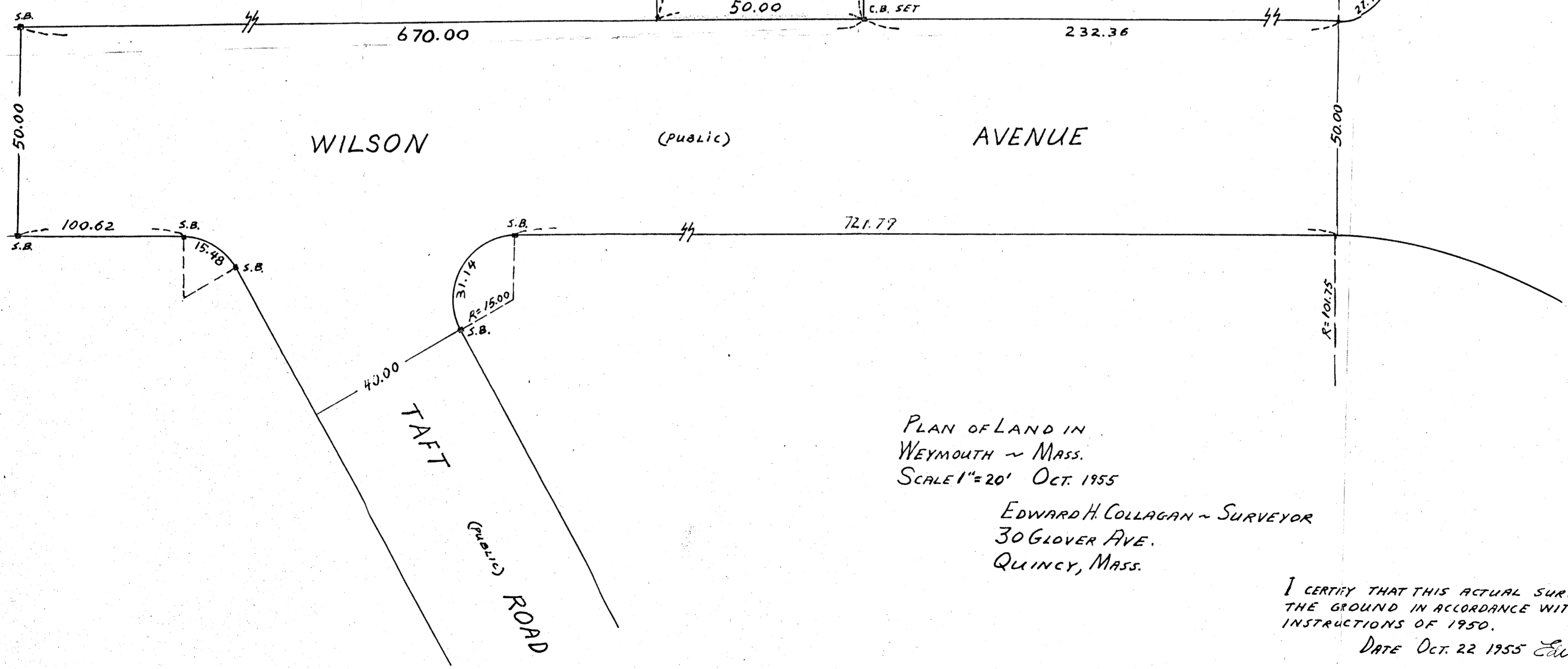
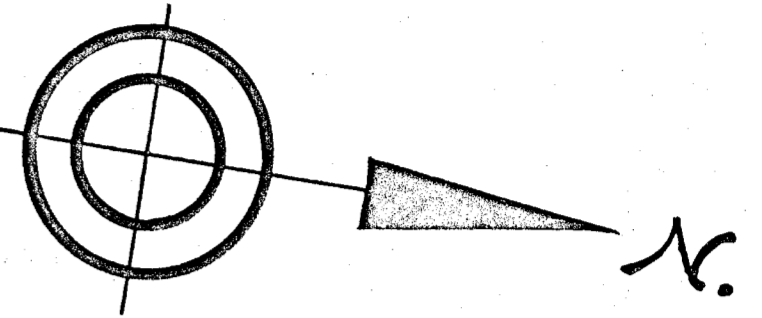
MICHELE P. FORTUNATO  
HELEN FORTUNATO

50.00  
6,250 s.f.

ALEXANDER MACLACHCAN  
ANNIE M. MACLACHCAN

CHARLES A. RUMBLE JR.  
EDITH A. RUMBLE

PRESIDENTS  
ROAD



PLAN OF LAND IN  
WEYMOUTH ~ MASS.  
SCALE 1"=20' OCT. 1955  
EDWARD H. COLLAGAN ~ SURVEYOR  
30 GLOVER AVE.  
QUINCY, MASS.

I CERTIFY THAT THIS ACTUAL SURVEY WAS MADE ON  
THE GROUND IN ACCORDANCE WITH THE LAND COURT  
INSTRUCTIONS OF 1950.  
DATE OCT. 22 1955 Edward H. Callagan  
SURVEYOR