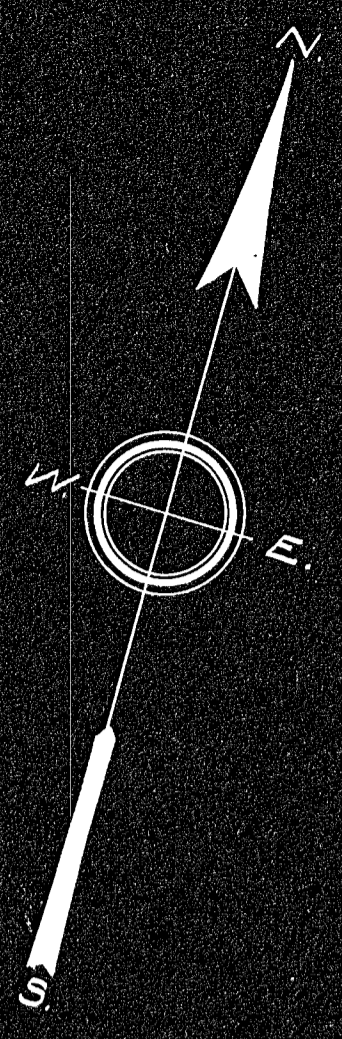
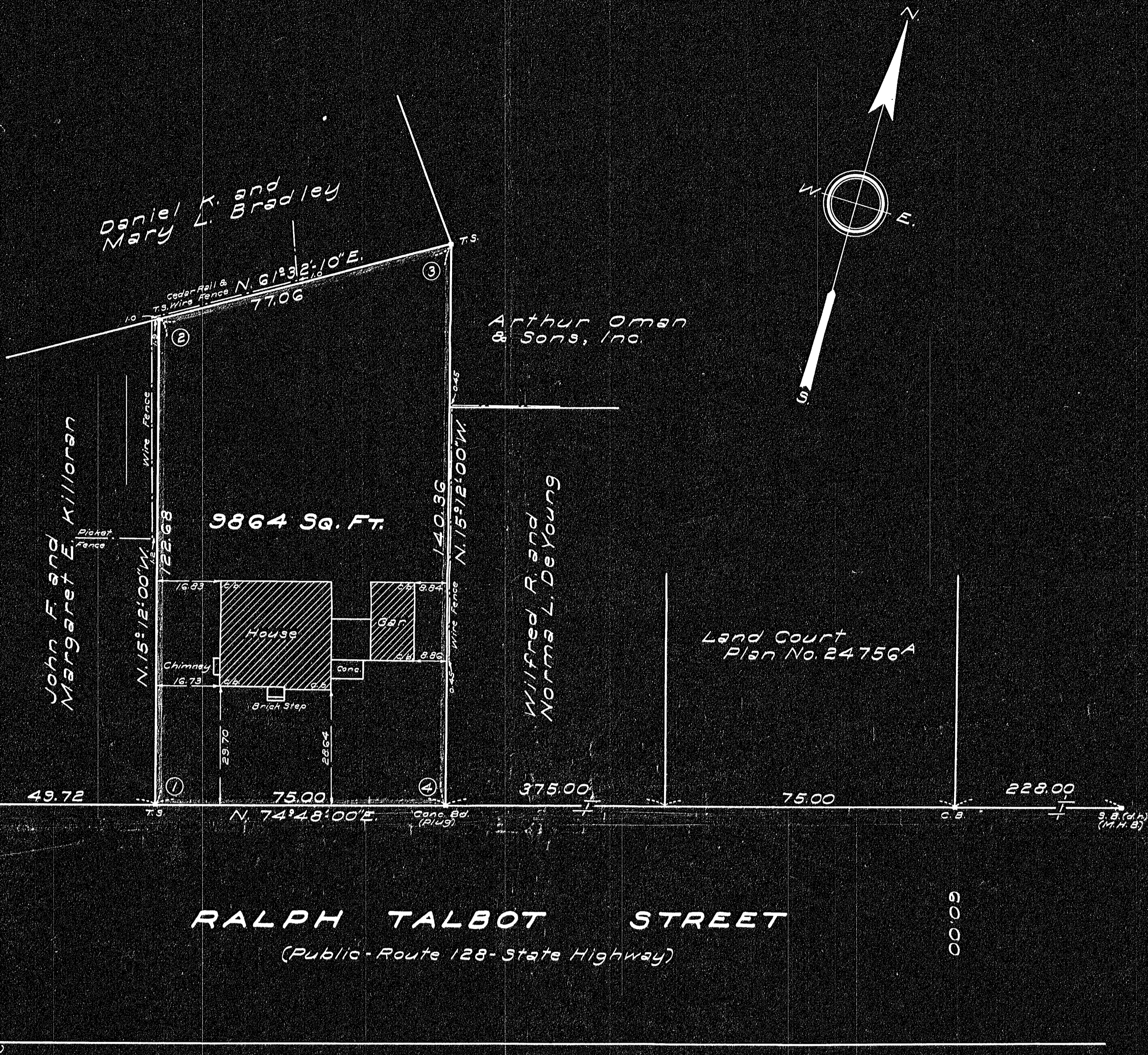


766193



Class A Survey

| Sta. | Interior Angle | Defl. Angle | Azimuth    | Dist.  | +Sine  | -Sine  | +Cos.  | -Cos.  |
|------|----------------|-------------|------------|--------|--------|--------|--------|--------|
| 1    | 90°00'00"      | 90°00'00"   | 164°48'00" | 122.68 | 32.17  |        |        | 118.39 |
| 2    | 103°15'50"     | 76°44'10"   | 241°32'10" | 77.06  |        | 67.74  |        | 36.73  |
| 3    | 76°44'10"      | 103°15'50"  | 344°48'00" | 140.36 |        | 36.80  | 135.45 |        |
| 4    | 90°00'00"      | 90°00'00"   | 74°48'00"  | 75.00  | 72.38  |        | 19.66  |        |
|      | 360°00'00"     | 360°00'00"  |            |        | 104.55 | 104.54 | 155.11 | 155.12 |

26199  
11-16-55  
L.W.P. BUR

I certify that this actual survey was made on the ground in accordance with the Land Court Instructions of 1950 on October 5, 1955.

October 15, 1955. *Clark Perkins* Eng'r  
Hingham, Mass.

Weymouth - # 43

APPROVAL UNDER THE  
SUBDIVISION CONTROL LAW  
WHERE REQUIRED  
Weymouth Planning Board  
*John F. ...*

**PLAN OF LAND  
IN  
WEYMOUTH, MASS.**

Scale: 20 feet to an inch. October 15, 1955.  
Lewis W. Perkins and Son, Eng'rs., Hingham, Mass.

RECORDED PLAN  
Order \_\_\_\_\_  
Traverse filed on plan \_\_\_\_\_  
Atlas \_\_\_\_\_  
Drawn by \_\_\_\_\_  
Math. by \_\_\_\_\_  
Inspected by \_\_\_\_\_  
Approved \_\_\_\_\_

26199A  
4343