

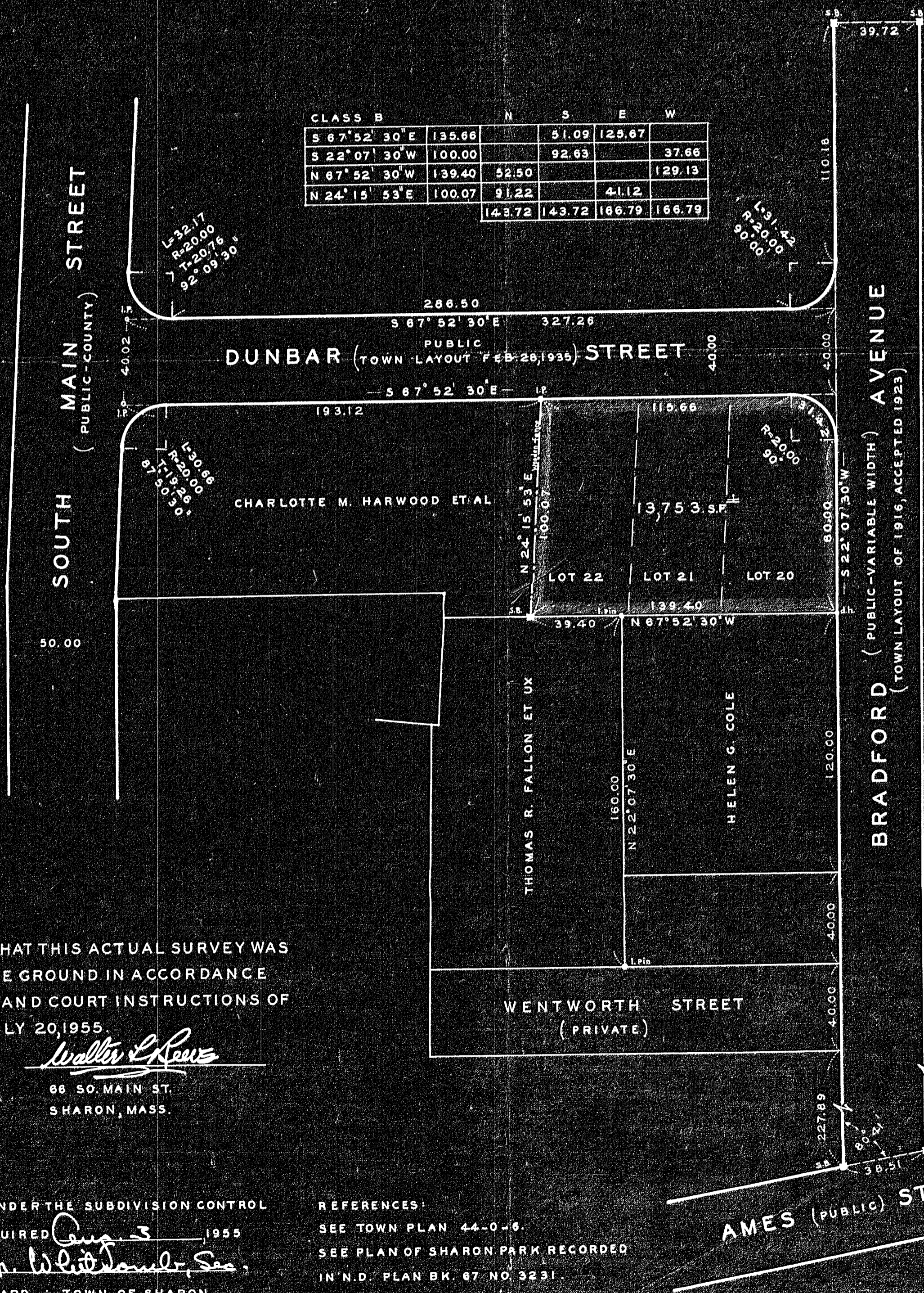
PLAN OF LAND IN SHARON, NORFOLK CO., MASS.

SCALE: 1" = 40'

JULY 20, 1955

WALTER L. REEVE, SURVEYOR
SHARON, MASS.

OWNER: MARIA A. GLENNON
TAX TITLE ASSIGNED
TO: HELEN G. COLE



I CERTIFY THAT THIS ACTUAL SURVEY WAS MADE ON THE GROUND IN ACCORDANCE WITH THE LAND COURT INSTRUCTIONS OF 1950 ON JULY 20, 1955.

JULY 25, 1955

Walter L. Reeve

86 SO. MAIN ST.
SHARON, MASS.

#26195
MAY BE FILED
Date 11-15-55 By EDR

No. Co. # 46

APPROVAL UNDER THE SUBDIVISION CONTROL LAW NOT REQUIRED
August 3, 1955
Anders J. Whitcomb, Sec.
PLANNING BOARD - TOWN OF SHARON

REFERENCES:
SEE TOWN PLAN 44-0-6.
SEE PLAN OF SHARON PARK RECORDED IN N.D. PLAN BK. 67 NO. 3231.