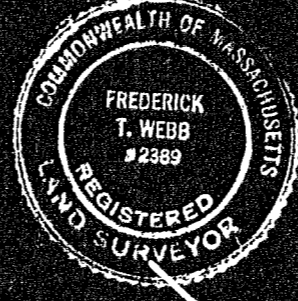
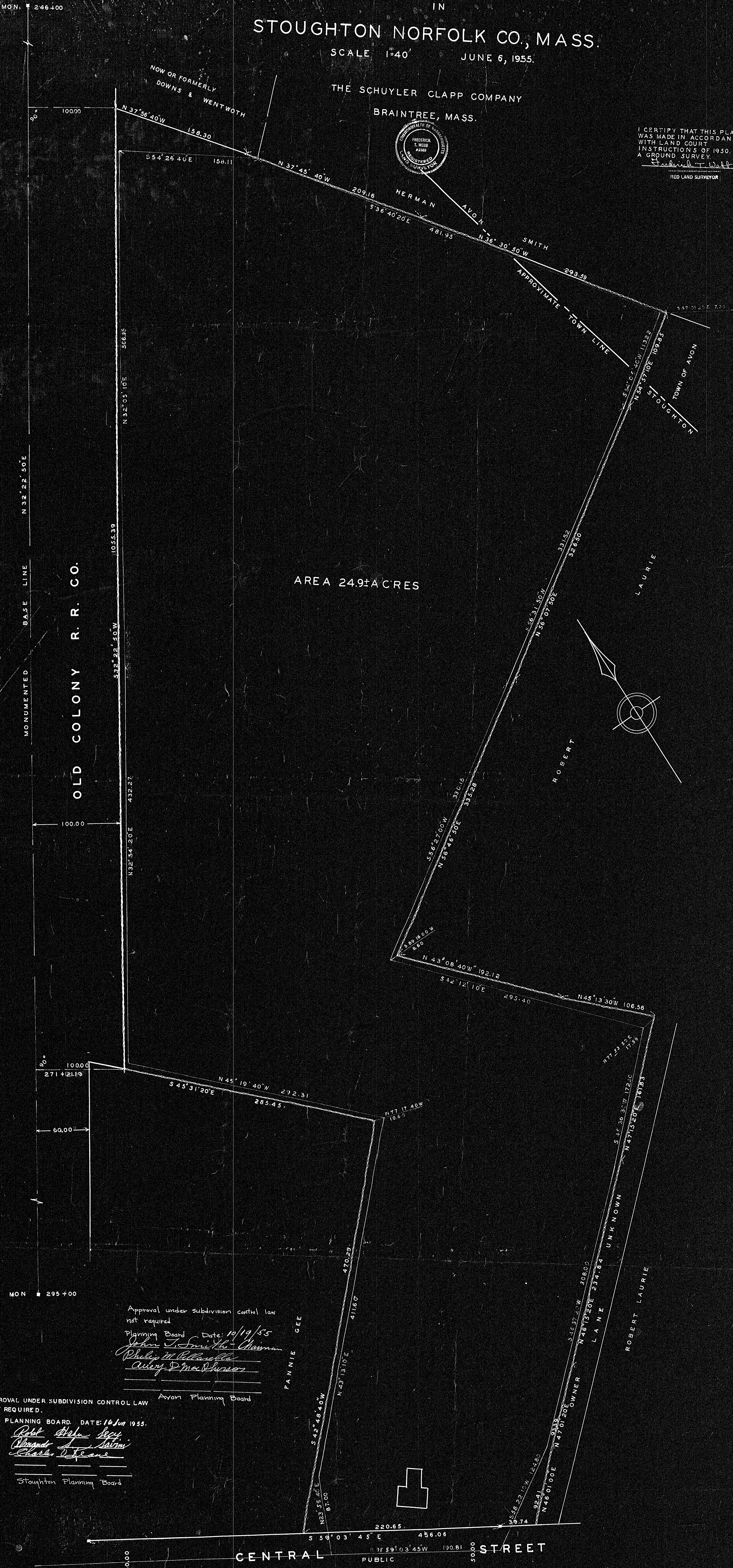


PLAN OF LAND  
IN  
STOUGHTON NORFOLK CO, MASS.  
SCALE 1"=40' JUNE 6, 1955.

THE SCHUYLER CLAPP COMPANY  
BRAintree, MASS.



I CERTIFY THAT THIS PLAN  
WAS MADE IN ACCORDANCE  
WITH LAND COURT  
INSTRUCTIONS OF 1950.  
A GROUND SURVEY.  
*Frederick T. Webb*  
REGISTERED LAND SURVEYOR



AREA 24.9± ACRES

OLD COLONY R. R. CO.

Approval under subdivision control law  
not required  
Planning Board Date: 10/19/55  
*John T. Smith* Chairman  
*Philip W. Callahan*  
*Oliver J. MacArthur*  
Avon Planning Board

APPROVAL UNDER SUBDIVISION CONTROL LAW  
NOT REQUIRED.  
PLANNING BOARD, DATE: 10 Jun 1955.  
*Robert Ralph Scott*  
*Alvin S. Martin*  
*Charles D. Sears*  
Stoughton Planning Board

MAY BE  
FILED  
Oct 24 1955 R.C.C.  
Date By  
6 666. train NO 25  
Norfolk Co. Pl. 30

26136