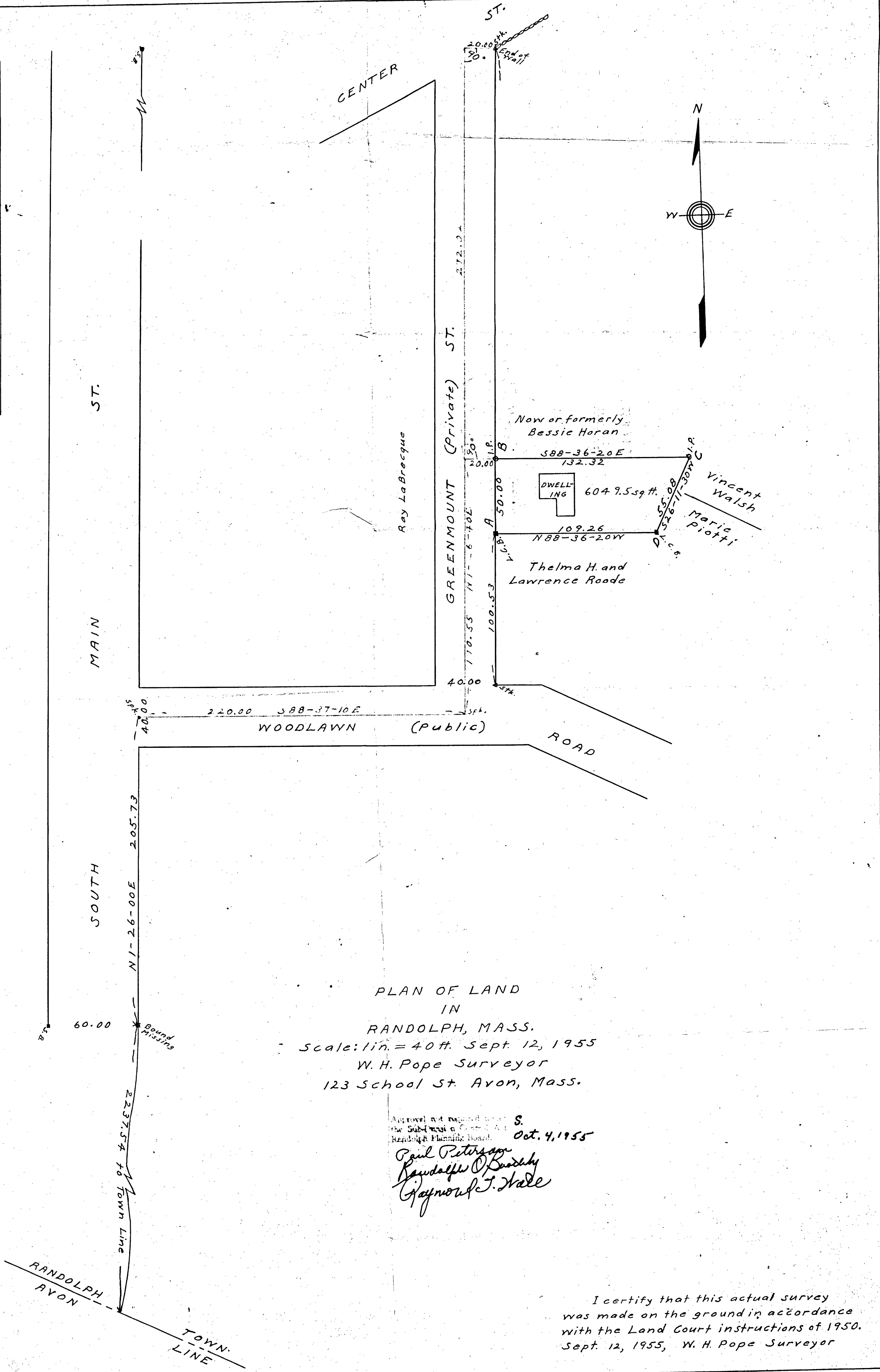


Sta.	Dist.	Bear.	Lat.		Dept.
			N	S	
A	50.00	N 1-26-40 E	49.98		1.26
B	132.32	S 88-36-20 E		9.22	132.28
C	55.08	S 26-11-30 W		49.42	24.31
D	109.26	N 88-36-20 W	2.66		109.23
			52.64	52.64	133.54



PLAN OF LAND
IN
RANDOLPH, MASS.
Scale: 1 in. = 40 ft. Sept. 12, 1955
W. H. Pope Surveyor
123 School St. Avon, Mass.

Approved and registered to the Subdivision of the Randolph Planning Board.
S. Oct. 4, 1955
Paul Peterson
Randolph O. Bradley
Raymond J. Hall

I certify that this actual survey was made on the ground in accordance with the Land Court instructions of 1950. Sept. 12, 1955, W. H. Pope Surveyor