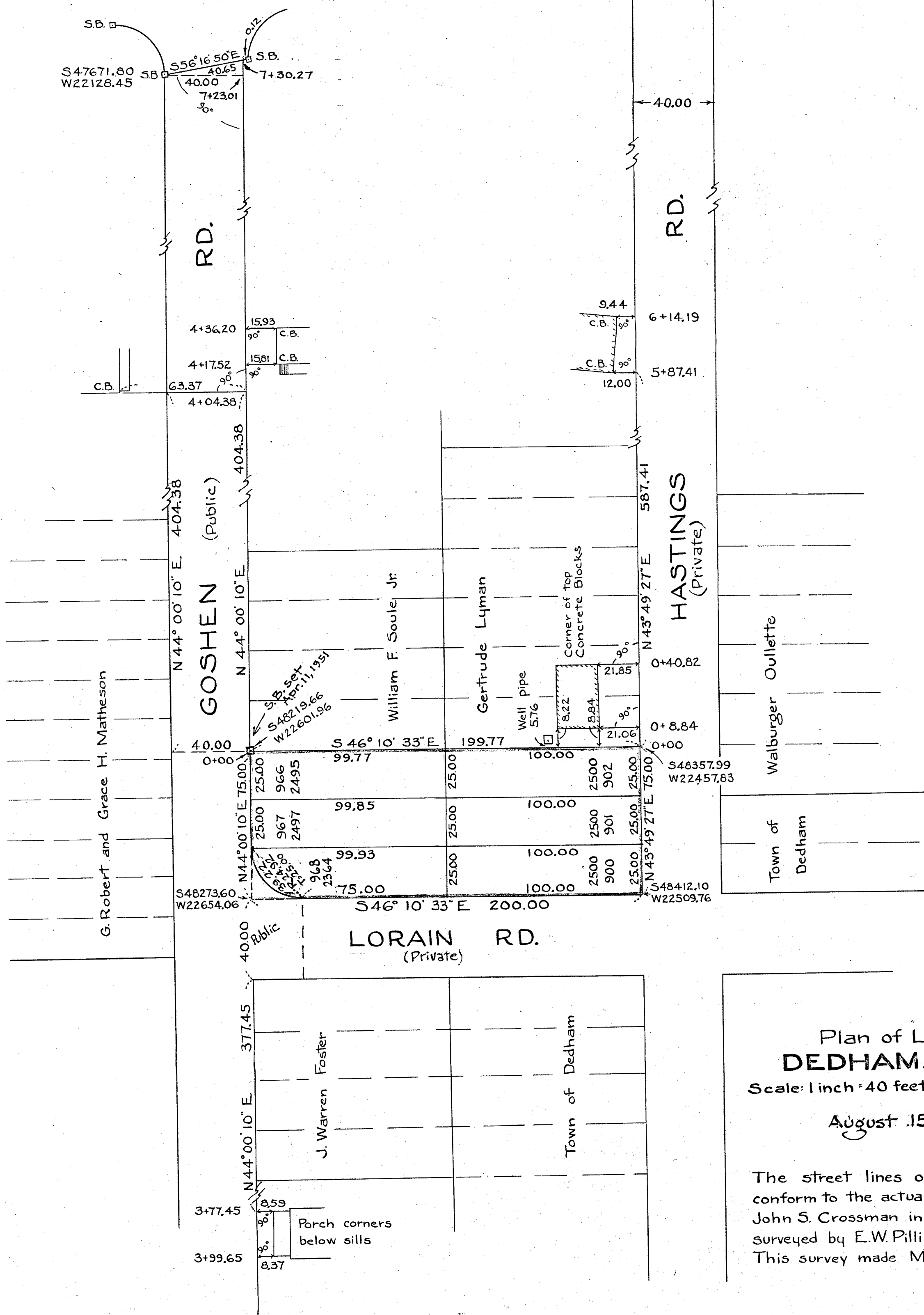


TRENTON RD.

State House
1936

TRENTON RD.
N 89° 09' 11" E 165.88



Plan of Land in
DEDHAM, MASS.
Scale: 1 inch = 40 feet E.W. Pilling
Engineer
August 15, 1955

The street lines on this plan conform to the actual staking by John S. Crossman in 1914 and surveyed by E.W. Pilling, December 1932. This survey made March 1951

Approval under Subdivision Control Law not required. DEDHAM PLANNING BOARD

I certify that this plan was made in accordance with Land Commission instructions of 1950
E.W. Pilling
Civil Engineer