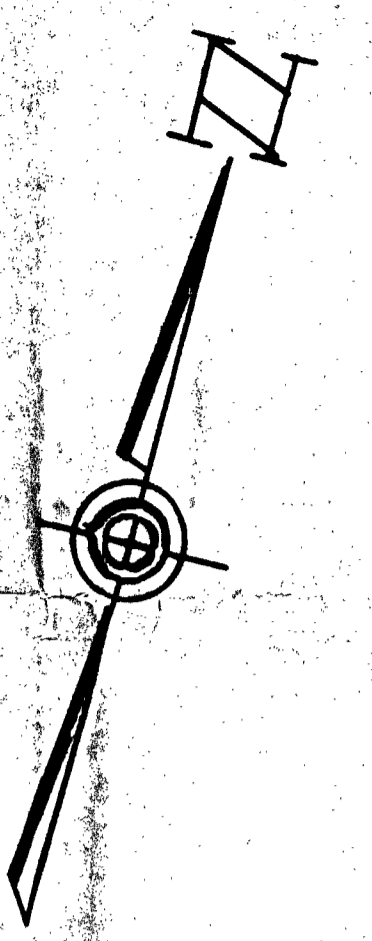


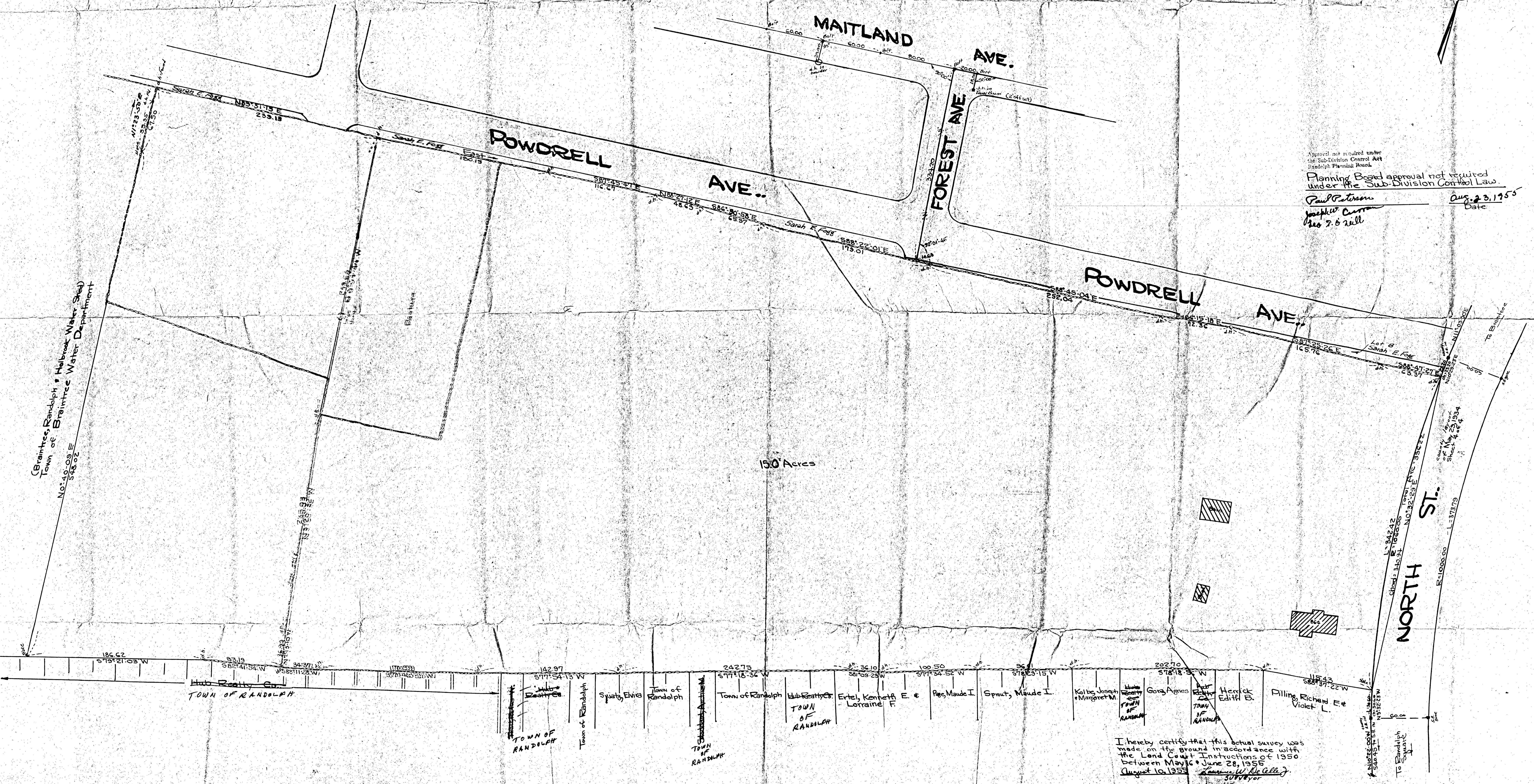
PLAN OF LAND  
**RANDOLPH, MASS.**  
 Scale 1"=40' August 10, 1955  
 L.W. DECELLE SURVEYORS, INC.  
 Bonded Land Surveyors  
 1191 North Main St., Randolph



Approval not required under  
 the Sub-Division Control Act  
 Randolph Planning Board  
 Planning Board approval not required  
 under the Sub-Division Control Law.  
 Paul Peterson Date: Aug. 23, 1955  
 Joseph Curran  
 Geo. P. & Will

(Braintree, Randolph & Melbrook Water Shed)  
 Town of Braintree Water Department  
 No. 10-03-E  
 54502

150 Acres



I hereby certify that this actual survey was  
 made on the ground in accordance with  
 the Land Court Instructions of 1950  
 between May 16 & June 28, 1955  
 August 10, 1955  
 L.W. Decelle  
 Surveyor