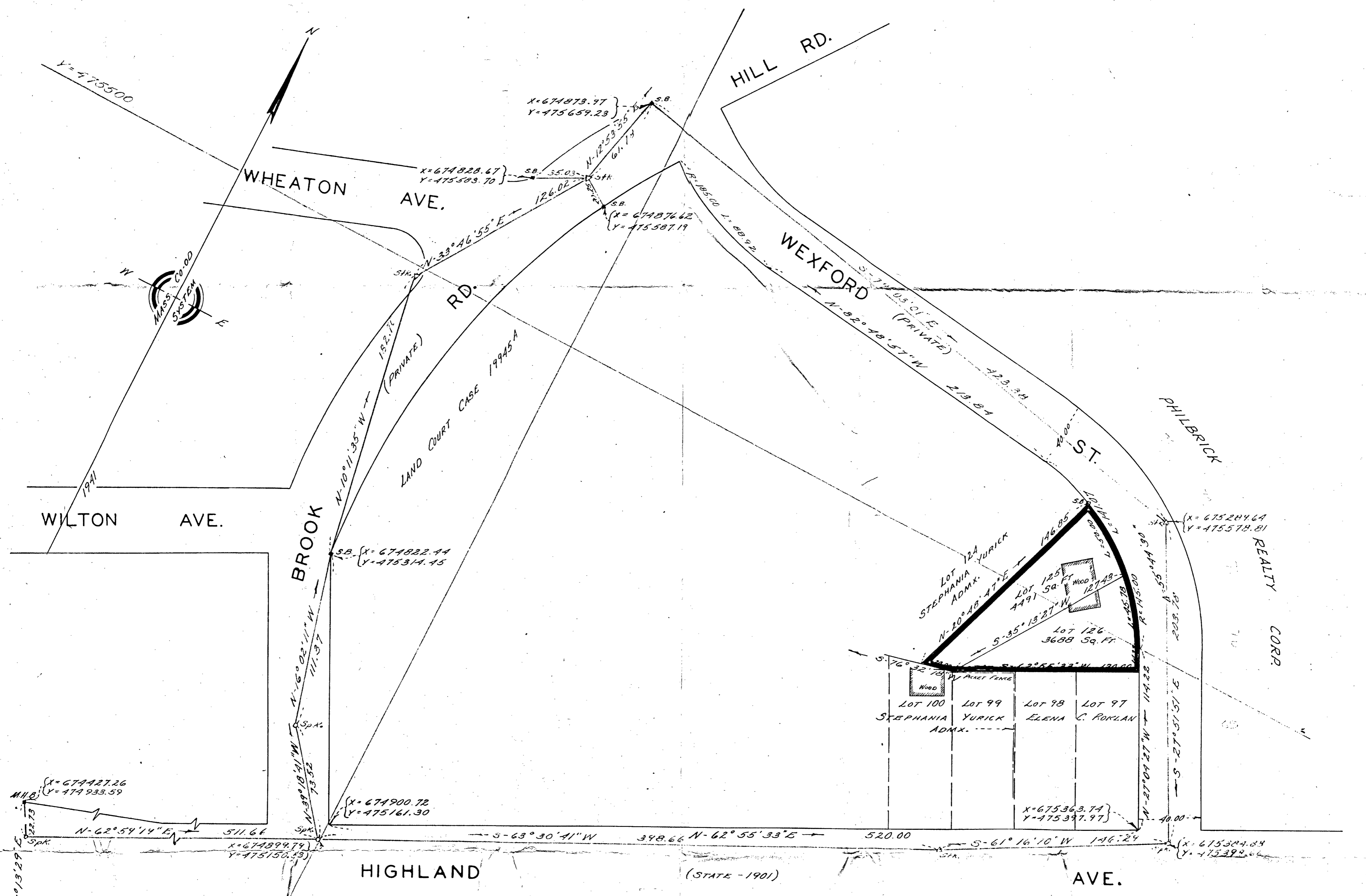


| LOT LINE TRAVERSE | | | X | | | Y | | | Pr. |
|-------------------|--------|--------|--------|--------|--------|--------|-----------|-----------|--------|
| Bearing | Dist. | | N | S | E | W | 675318.23 | 475487.01 | L.C. |
| S-62°55'33"W | 120.00 | | | 54.62 | | 106.85 | 675211.38 | 475432.39 | L.C. |
| N-35°13'27"E | 127.43 | 104.10 | | | 73.50 | | 675384.88 | 475536.49 | P.C. |
| S-45°09'48"E | 23.08 | | | 16.27 | 16.37 | | 675301.25 | 475520.22 | P.I. |
| S-27°04'27"E | 23.08 | | | 20.55 | 10.51 | | 675311.76 | 475499.67 | P.T. |
| S-27°04'27"E | 14.22 | | | 12.66 | 6.47 | | 675318.23 | 475487.01 | L.C. |
| Lot 125 | | | | | | | | | |
| S-76°32'18"W | 20.00 | | | 9.66 | | 19.45 | 675191.93 | 475427.73 | L.C. |
| N-20°48'47"E | 146.85 | 137.27 | | | 52.18 | | 675244.11 | 475565.00 | P.C. |
| S-64°33'14"E | 25.25 | | | 10.70 | 22.87 | | 675266.98 | 475564.30 | P.I. |
| S-45°09'48"E | 25.25 | | | 17.80 | 17.90 | | 675284.88 | 475536.49 | P.I. |
| S-35°13'27"W | 127.43 | | 104.10 | | | 73.50 | 675211.38 | 475432.39 | L.C. |
| FIELD TRAVERSE | | | | | | | | | |
| | | | | | | | 674873.97 | 475659.23 | S.B. |
| S-79°02'58"E | 423.38 | | | 80.43 | 415.67 | | 675289.64 | 475578.81 | Spk. |
| S-27°51'45"E | 203.80 | | | 180.18 | 93.24 | | 675301.25 | 475398.66 | Spk. |
| S-61°16'02"W | 146.29 | | | | 70.33 | 128.28 | 675236.60 | 475328.34 | Spk. |
| S-63°30'32"W | 398.67 | | | | 177.83 | 352.81 | 674899.79 | 475150.53 | Spk. |
| N-39°18'41"W | 73.52 | 56.88 | | | | 46.58 | 674852.94 | 475207.41 | Spk. |
| N-16°02'11"W | 111.37 | 107.04 | | | | 30.77 | 674822.44 | 475314.45 | S.B. |
| N-10°11'35"W | 132.70 | 178.82 | | | | 32.33 | 674790.11 | 475494.27 | Spk. |
| N-33°46'55"E | 126.02 | 104.74 | | | 70.07 | | 674860.18 | 475599.01 | Spk. |
| N-12°53'55"E | 61.78 | 60.22 | | | 13.79 | | 674873.97 | 475659.23 | S.B. |
| | | | | | | | 674427.26 | 474933.59 | M.H.B. |
| S-72°13'29"E | 22.73 | | | 15.44 | 16.68 | | 674443.94 | 474918.15 | Spk. |
| N-62°54'16"E | 511.67 | 232.39 | | | 495.85 | | 674899.79 | 475150.53 | Spk. |
| N-39°18'41"E | 73.52 | 56.88 | | | | 46.58 | 674852.94 | 475207.41 | Spk. |
| N-16°02'11"E | 111.37 | 107.04 | | | | 30.77 | 674822.44 | 475314.45 | S.B. |

NOTE: CO-ORDINATES AND BEARINGS DETERMINED FROM L.C. CASE 1994S⁴ USING STONE BOUND ON BROOK RD AND MASS. HIGHWAY BOUND ON HIGHLAND AVE. LOT NUMBERS AS SHOWN ARE FROM THE FREMONT PARK SUBDIVISION OF 1896



PLAN OF LAND IN NEEDHAM, MASS.

JULY 28, 1953
SCALE 1 IN. = 40 FT.

BRUNDAGE ENGINEERING SERVICE
THOMAS R. BRUNDAGE JR.
CIVIL ENGINEER

I CERTIFY THAT THIS ACTUAL SURVEY WAS MADE ON THE GROUND IN ACCORDANCE WITH THE LAND COURT INSTRUCTIONS OF 1950 ON JULY 25, 1953

Thomas R. Brundage Jr.
CIVIL ENGINEER

Witnessed Under the Subdivision
and Land Act
George W. White
Harry V. Barry
Arthur H. Conway
Edmund W. Wamoy

Filed at the Registry of Deeds
for the County of Norfolk
Mass. on June 7, 1953