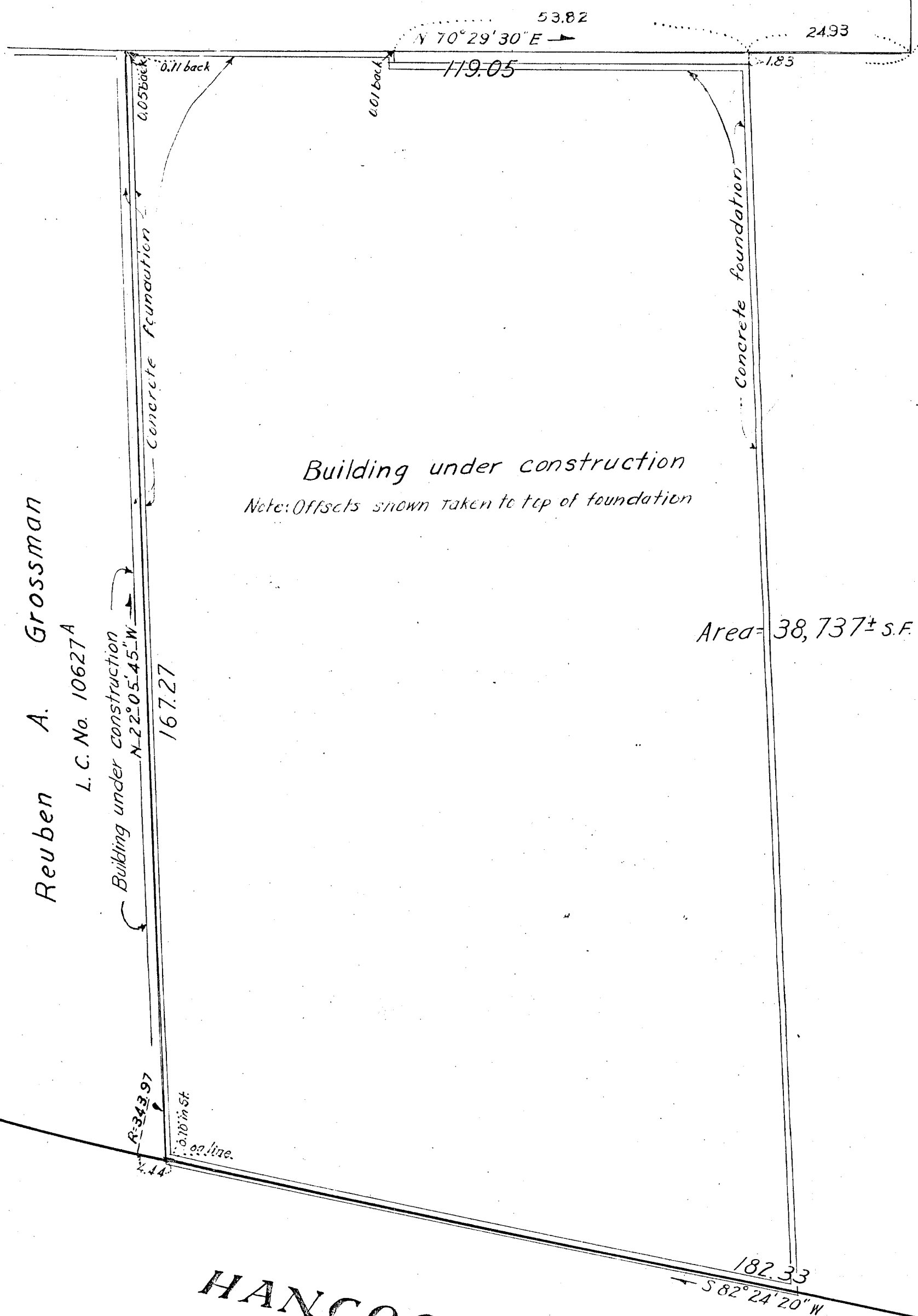


Municipal Parking Area

City of Quincy

City of Quincy



Building under construction
Note: Offsets shown taken to top of foundation

Area = 38,737± s.f.

Reuben A. Grossman

L.C. No. 10627A

Building under construction

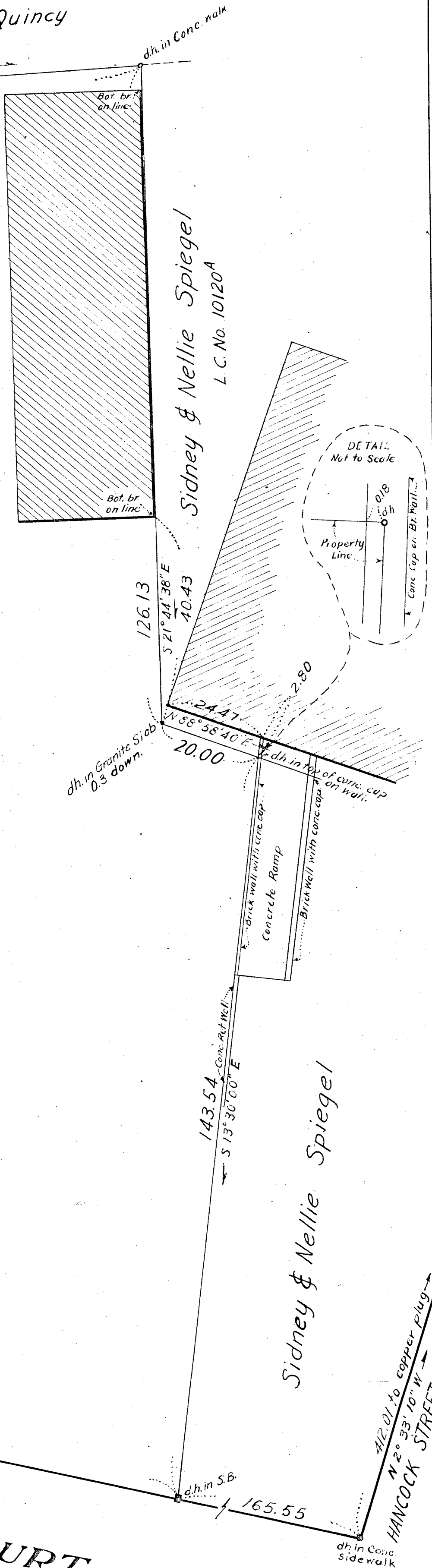
167.27

182.33

HANCOCK

(Public - 33 ft wide)

COURT



Sidney & Nellie Spiegel

L.C. No. 10120A

Sidney & Nellie Spiegel

HANCOCK STREET

3622

Plan of Land in

QUINCY

Scale: 1 in = 16 ft., July 29, 1955.

Schofield Brothers, Reg. Civil Engrs.

Framingham.

Petitioner: Ciffrino - Quincy Realty Trust

I certify that this actual survey was made on the ground in accordance with the Land Court instructions of 1950 between January 6, 1955 and July 26, 1955.

Date: July 29, 1955

Engineer: D.W. McKeechie

Approval under the Subdivision Control Law not required.

Quincy Planning Board:

[Signature]

Date: 8-8-55