

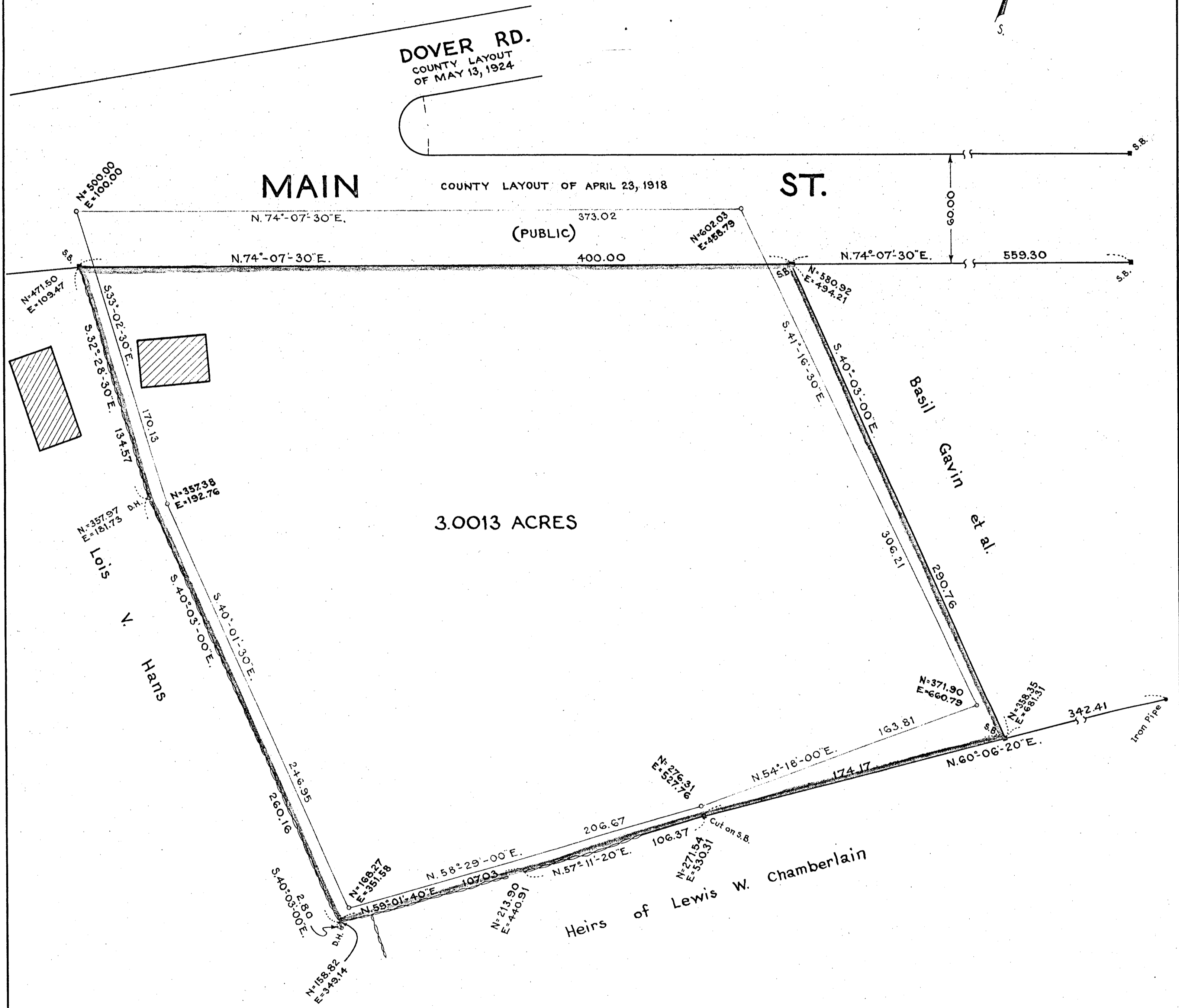
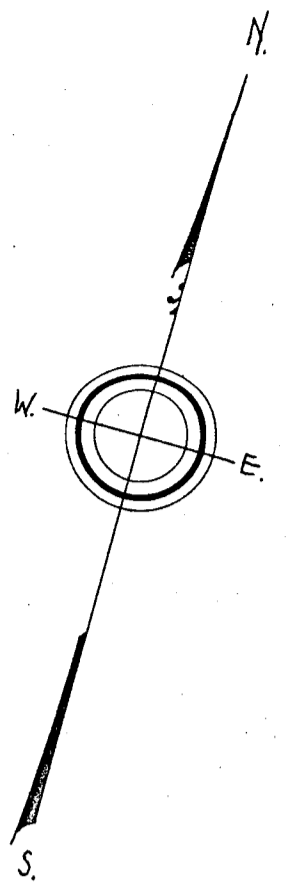
Plan of Land
in
MILLIS, MASS.

April 19, 1954 Scale: 1 inch = 40 feet.
Charles C. Cain, Engineer

I certify that this actual survey was made on the ground in accordance with the Land Court Instructions of 1950 on or between March 27, 1954 and April 3, 1954.

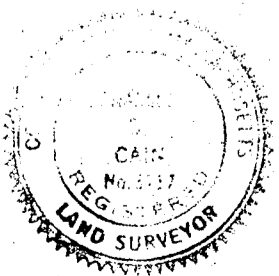
April 19, 1954

Charles C. Cain
Engineer



3.0013 ACRES

MILLIS PLANNING BOARD
Approval under the subdivision control law not required.



Talbot Dewey
James G. Clark
Alexander H. Hancowitz

Property Line Traverse					
Bearing	Dist.	N.	S.	E.	W.
N.74°-07'-30"E.	400.00	109.42		384.74	
S.40°-03'-00"E.	290.76		222.57	187.09	
S.60°-06'-20"W.	174.17		86.81		151.00
S.57°-11'-20"W.	106.37		57.64		89.40
S.59°-01'-40"W.	107.03		55.08		91.77
N.40°-03'-00"W.	260.16	199.15			167.40
N.32°-28'-30"W.	134.57	113.53			72.25
		422.10	422.10	571.83	571.82