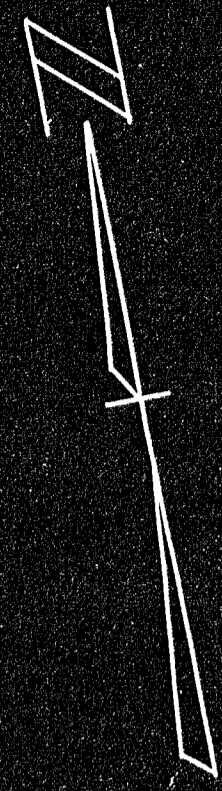


Date: \_\_\_\_\_ Approved by: \_\_\_\_\_  
 Town Engineer  
 Date: \_\_\_\_\_ Approved by: \_\_\_\_\_  
 \_\_\_\_\_  
 \_\_\_\_\_  
 Planning Board  
 TOWN OF BRAINTREE

SUBDIVISION OF LAND  
**RESERVOIR ACRES**  
**BRAINTREE - MASS...**

Scale 1"=40' - May 11, 1955  
 L.W. DeCELLE SURVEYORS, INC.  
 Bonded Land Surveyors  
 1191 North Main St. Randolph, Mass.  
 Zoning Classification: "A"  
 OWNER: Contemporary Homes, Inc.  
 Randolph St. Canton, Mass.

Bench Mark Used:  
 Rt. outer corner of bottom step  
 @ house #515 Pond St.  
 Elevation 148.56 Braintree Datum Base



SEE DUPLICATE  
 TRACINGS IN  
 ENGINEER'S OFFICE  
 FOR PLANNING BOARD OK

BOARD OF HEALTH  
 Approved by: \_\_\_\_\_  
 Date: \_\_\_\_\_  
 WATER COMMISSIONERS  
 Approved by: \_\_\_\_\_  
 Date: \_\_\_\_\_  
 SUPERINTENDENT OF STREETS  
 Approved by: \_\_\_\_\_  
 Date: \_\_\_\_\_



MAY BE  
 FILED  
 8-3-55  
 By L.W. DeCelle

I hereby certify that this survey was  
 made on the ground between April 27,  
 May 1, 1955, in accordance with Land Court  
 Instructions of 1950.  
 Date: May 11, 1955  
 Surveyor

■ Cement Bounds to be set (under engineers supervision) where indicated.

This is a copy.

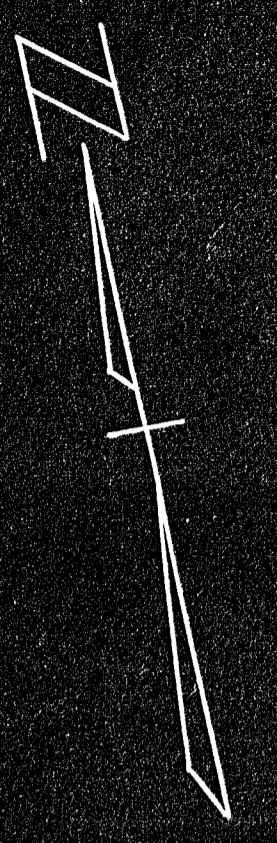


Board of Health  
Approved by: \_\_\_\_\_  
Date: \_\_\_\_\_

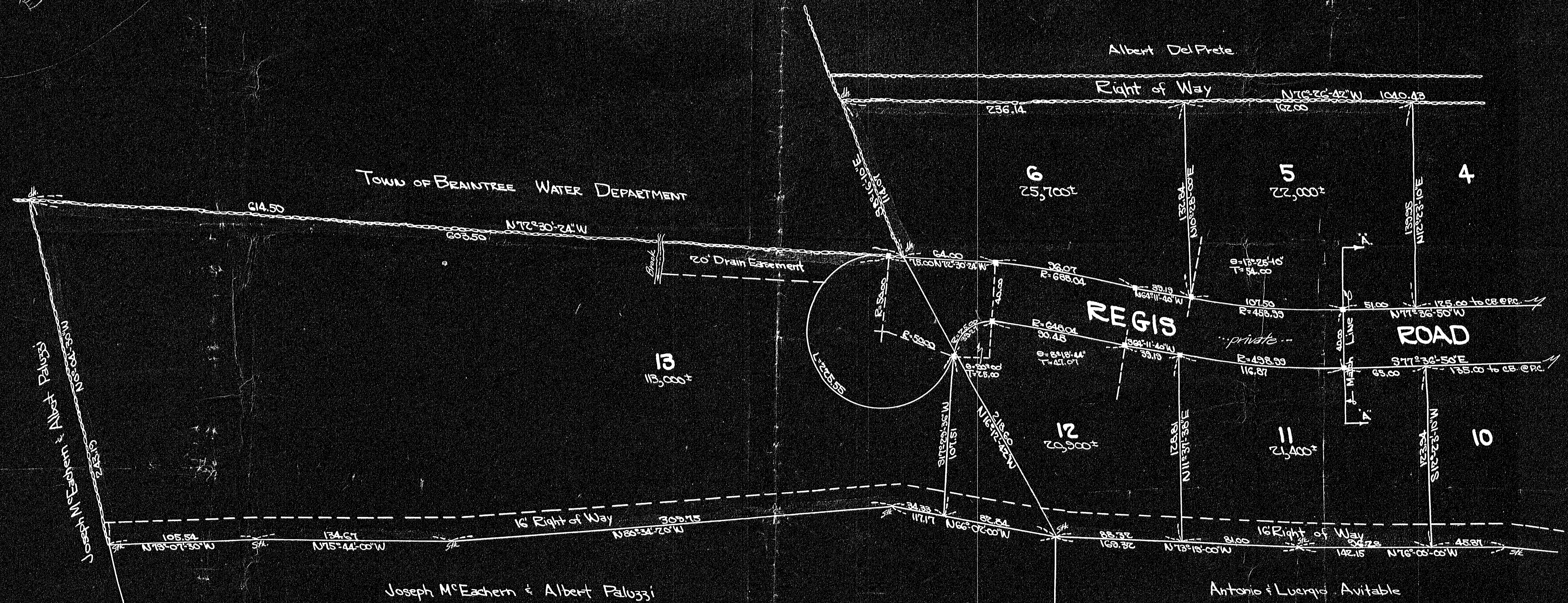
Water Commissioners  
Approved by: \_\_\_\_\_  
Date: \_\_\_\_\_

Superintendent of Streets  
Approved by: \_\_\_\_\_  
Date: \_\_\_\_\_

SEE DUPLICATE  
TRACINGS IN EUSERS  
CORP. FOR PLANNING  
BOARD O.K.



SUBDIVISION OF LAND  
**RESERVOIR ACRES**  
**BRAINTREE MASS.**  
Scale 1"=40' May 11, 1955  
L.W. DECELLE SURVEYORS, INC.  
Bonded Land Surveyors  
101 North Main St. Randolph, Mass.  
Zoning Classification: "A"  
OWNER: Contemporary Homes, Inc.  
Randolph St. Canton, Mass.



I hereby certify that this survey was made  
on the ground between April 1st & May 1, 1955  
in accordance with Land Court Instructions  
of 1950.  
Date: May 11, 1955 Lawrence W. Decelle  
Surveyor.

25930  
**MAY BE FILED**  
8-8-55  
Date: \_\_\_\_\_ By: L.W.D.

BRAINTREE III  
# 38

This is a copy.