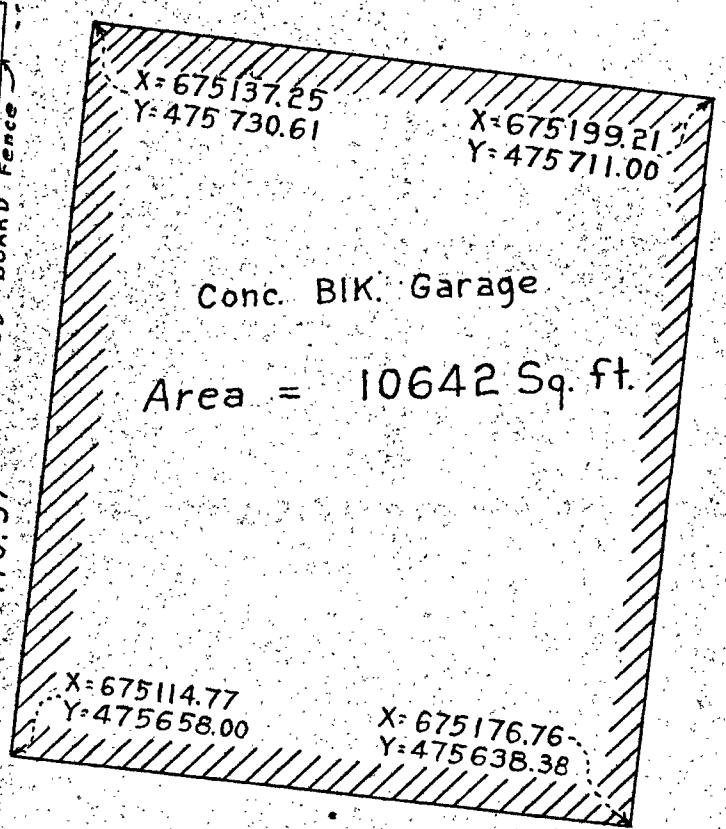


Detail Sketch of Locus
Scale 1 in. = 20 ft.



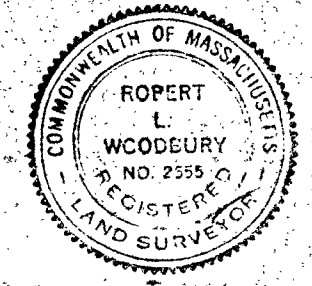
See plans by Brundage
Engineering Service
July 28, 1953 + Cheney &
Woodbury July 7, 1955

For further details of traverse and bound
connections see plan by Cheney & Woodbury
dated July 7, 1955.
Lot numbers refer to FREMONT PARK
plan by White + Wetherbee dated March 1896

Plan of Land in
NEEDHAM MASS.

Scale 1 in. = 40 ft. Cheney & Woodbury
Civil Engineers

August 1, 1955



I certify that this survey was made in
accordance with Land Court Instructions of 1950
Robert L. Woodbury
Civil Engineer

Transit line traverse						
Bearing	Dist.	N	S	E	W	Y
N85°48'00"W	102.91	7.54			102.63	675 090.45 475 596.21
N17°36'10"E	149.57	142.56		45.23		135.68 738.77
N84°00'20"E	105.89	11.06		105.31		240.99 749.83
S16°33'20"W	168.13		161.16		47.91	193.08 588.67
		161.16	161.16	150.54	150.54	
Error = 1/20252						
Property line traverse						
N82°48'57"W	90.00	11.26			89.29	675 100.73 475 630.45
N13°32'20"E	110.97	107.89		25.97		675 126.70 738.34
S85°19'47"E	100.00		8.14	99.66		226.36 730.20
S18°07'30"W	116.81		111.01		36.34	190.02 619.19
		119.15	119.15	125.63	125.63	