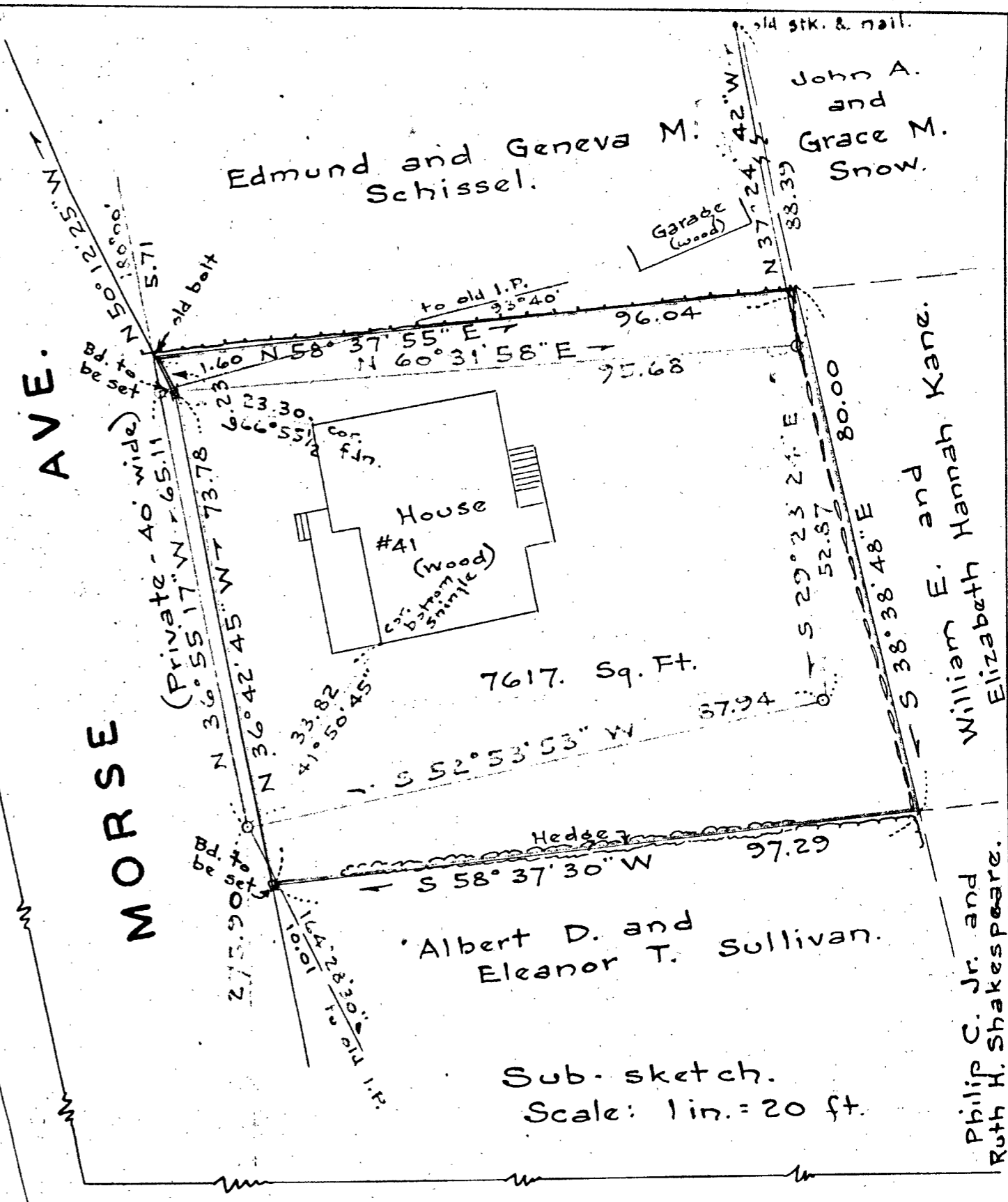
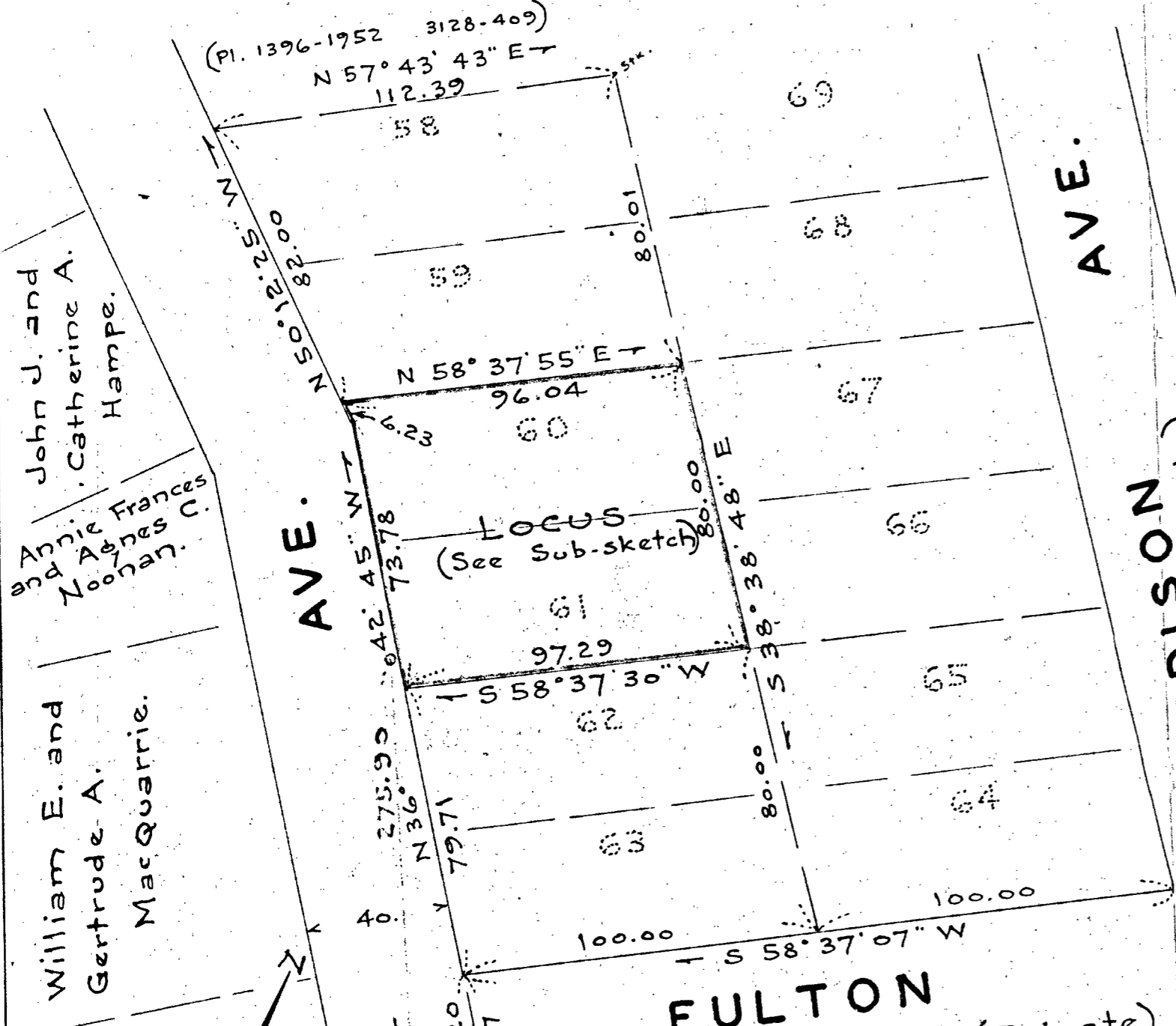


Lot numbers refer to lots shown on plan 3126, plan Bk. 65, Norfolk Registry.

(Pl. 1396-1952 3128-409)  
 N 57° 43' 43" E  
 112.39



Transit Line Traverse:					
Bearing	Dist.	N.	S.	E.	W.
N 36° 55' 17" W	65.11	52.05			39.11
N 60° 31' 58" E	95.68	47.07		83.30	
S 29° 23' 24" E	52.87		46.07	25.95	
S 52° 53' 53" W	87.94		53.05		70.14
closure 1:13464		99.12	99.12	109.25	109.25
Property Line Traverse:					
S 38° 38' 48" E	80.00		62.48	49.96	
S 58° 37' 30" W	97.29		50.65		83.06
N 36° 42' 45" W	73.78	59.15			44.11
N 50° 12' 25" W	6.23	3.99			4.79
N 58° 37' 55" E	96.04	49.99		82.00	
		113.13	113.13	131.96	131.96

Plan of Land in  
**DEDHAM, MASS.**  
 Scale: 1 in. = 40 ft. Cheney & Woodbury,  
 Civil Engineers.

July 26, 1955.



I certify that this survey was made in accordance with Land Court instructions of 1950.  
 Frank L. Cheney  
 Civil Engineer

WALNUT ST.  
 CEDAR ST.

FULTON ST. (Private)

MORSE AVE.

EDISON (Private)

ST.

MORSE

Ld. Ct. Case 5746

Ld. Ct. Case 5197

Ld. Ct. Case 5197

S.B. not found

S.B. not found