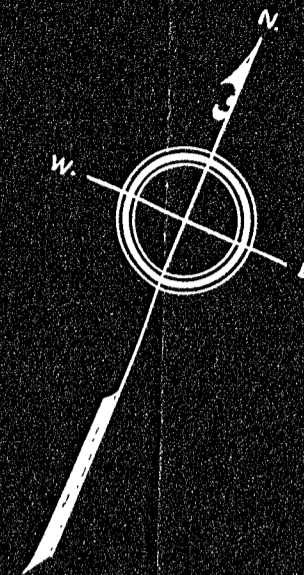


PORTER (Public) ST

PLAN OF LAND IN STOUGHTON, MASS.

SCALE 20 FT.=1 IN. - MAY 10, 1955

Walter G. Pratt, Surveyor - 90 Lincoln St., Stoughton, Mass.



(B)

AZIMUTH	Distance	Latitude		Departure	
		N	S	E	W
S. 25° 00' E.	14.00		12.68	5.91	
S. 69° 44' W.	59.30		20.51		55.62
N. 21° 35' W.	12.33	11.45			4.53
N. 68° 09' E.	58.45	21.74		54.24	
TOTALS	144.08	33.19	33.19	60.15	60.15

(A)

AZIMUTH	Distance	Latitude		Departure	
		N	S	E	W
N. 68° 09' E.	102.50	38.14		95.13	
S. 25° 15' E.	16.00		14.47	6.82	
S. 69° 16' W.	102.70		36.35		96.04
N. 25° 00' W.	14.00	12.68			5.91
TOTALS	235.20	50.82	50.82	101.95	101.95

FREEMAN (Public) STREET

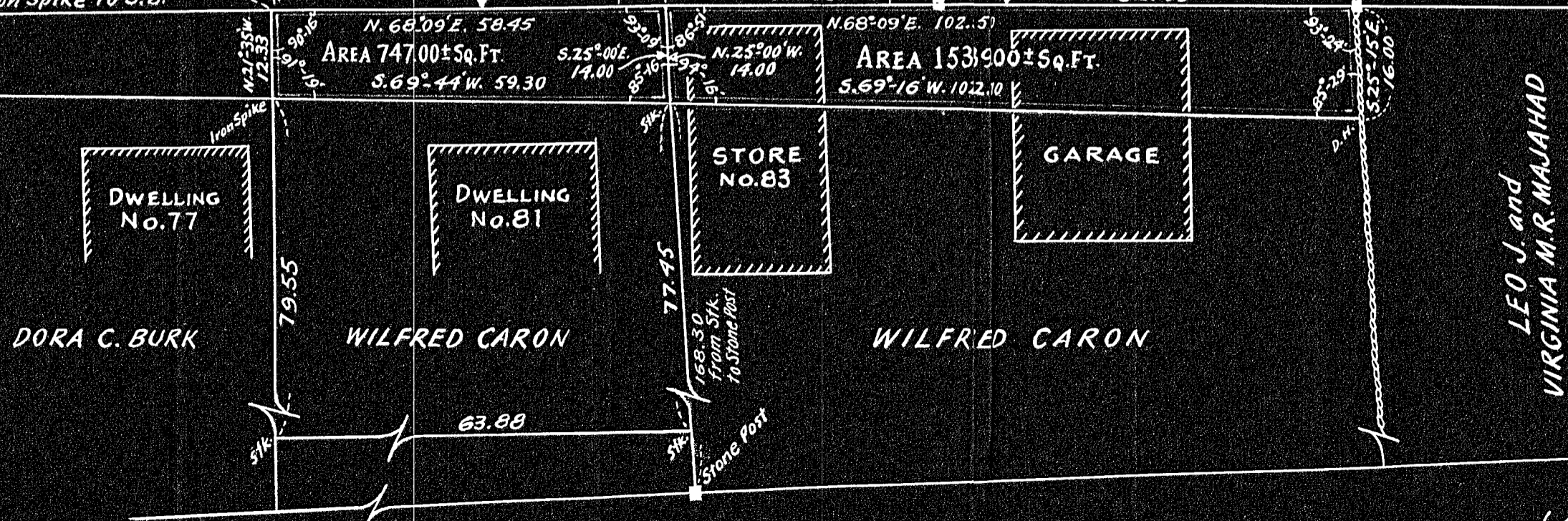
J. ALBERT and HARRIET B. CARLE
GERTRUDE C. KELLEHER

FREEMAN (Public) STREET

FREEMAN (Private) STREET

(B)

(A)



Approval Under Subdivision
Control Law Not Required
19 May 1955
Joseph J. ... Chairman
Robert Baker
Alfredo S. ...
Arthur E. ...

PLEASANT (Public) STREET

I certify that this actual survey was made on the ground
in accordance with the Land Court Instructions of 1950
May 10, 1955 Walter G. Pratt, Surveyor.