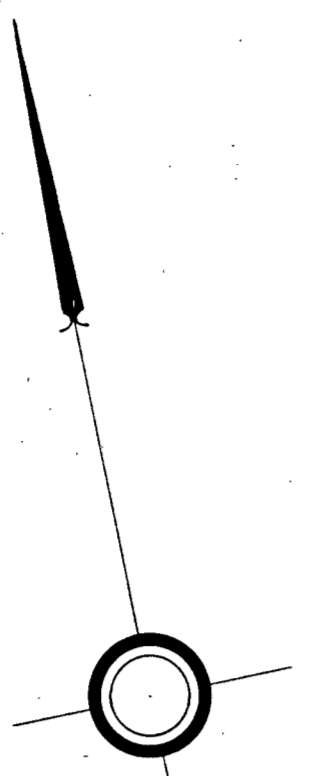


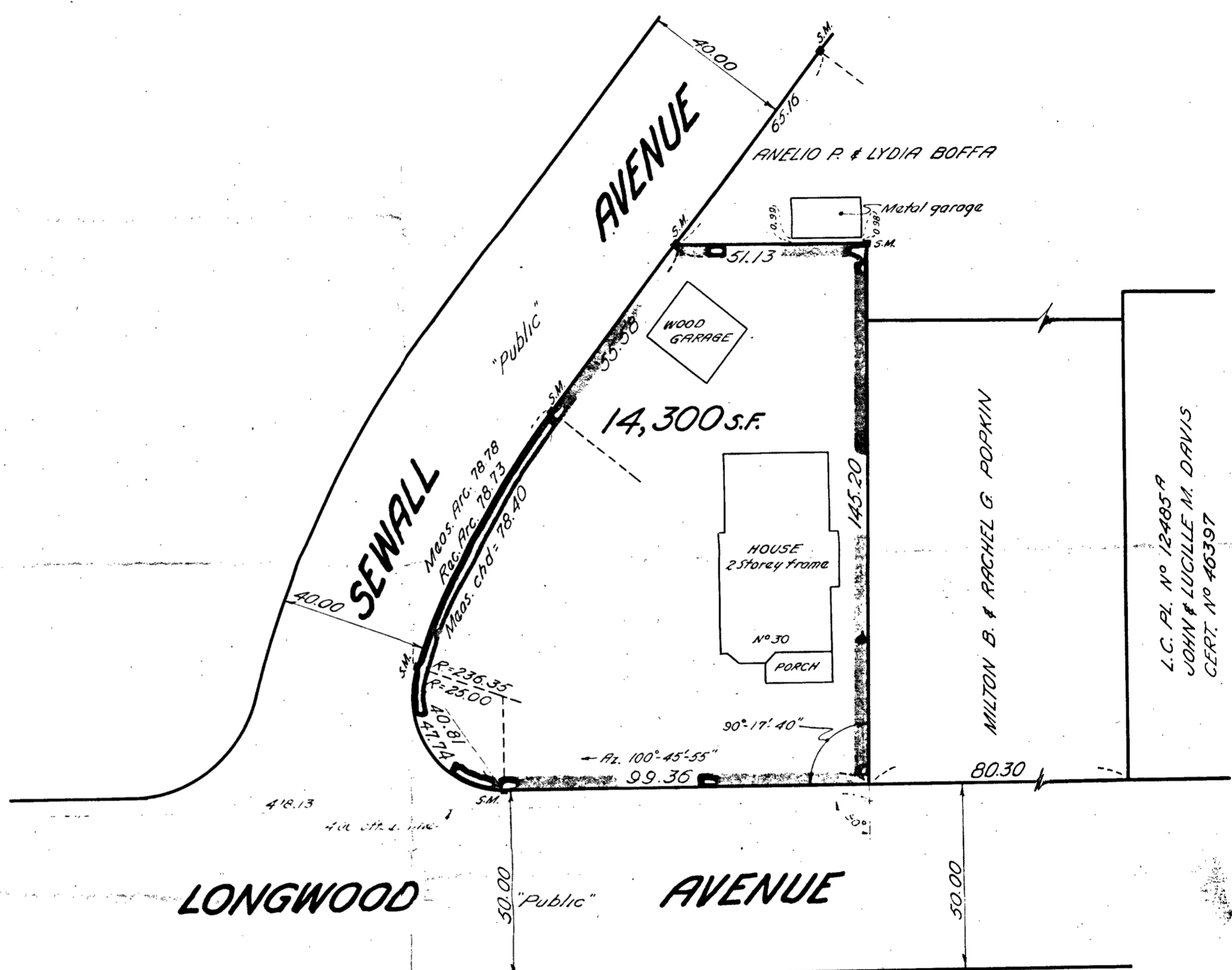
INTERIOR ANGLE	DEF. ANGLE	AZIMUTH	DISTANCE	+SINE	-SINE	+COSINE	-COSINE
89°-57'-03"	90°-02'-57"	11°-03'-35"	145.20	27.855		142.508	
90°-17'-40"	89°-42'-20"	100°-45'-55"	99.36	99.611			16.559
125°-17'-28"	54°-42'-32"	155°-28'-27"	40.81	16.940			37.128
115°-44'-27"	64°-15'-33"	219°-44'-00"	78.40		50.118		60.296
170°-29'-53"	9°-30'-07"	229°-14'-07"	55.58		42.096		36.291
128°-13'-29"	51°-46'-31"	281°-00'-38"	51.13		50.192	9.766	
720°-00'-00"				142.406	142.406	152.274	152.274



69F
 X=702310.86
 Y=459166.7

7°-42'-32"
 154.18
 113°-57'-40"

89E
 X=702312.16
 Y=459166.57



We hereby certify that this actual survey was made on the ground in accordance with the Land Court Instructions of 1950 between May 10, and May 12, 1955.
 Henry F. Bryant & Son, Inc.
 45 White Place, Brookline
 May 18, 1955

By: *Ralph H. Jones*

PLAN OF LAND IN BROOKLINE MASS.

Scale: 1 inch = 30 ft.
 May 18, 1955

Henry F. Bryant & Son, Inc.
 Engineers - Brookline, Mass.