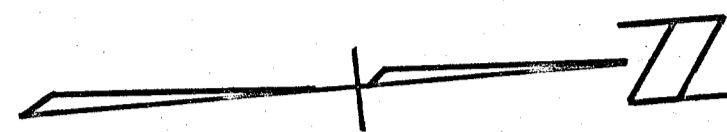


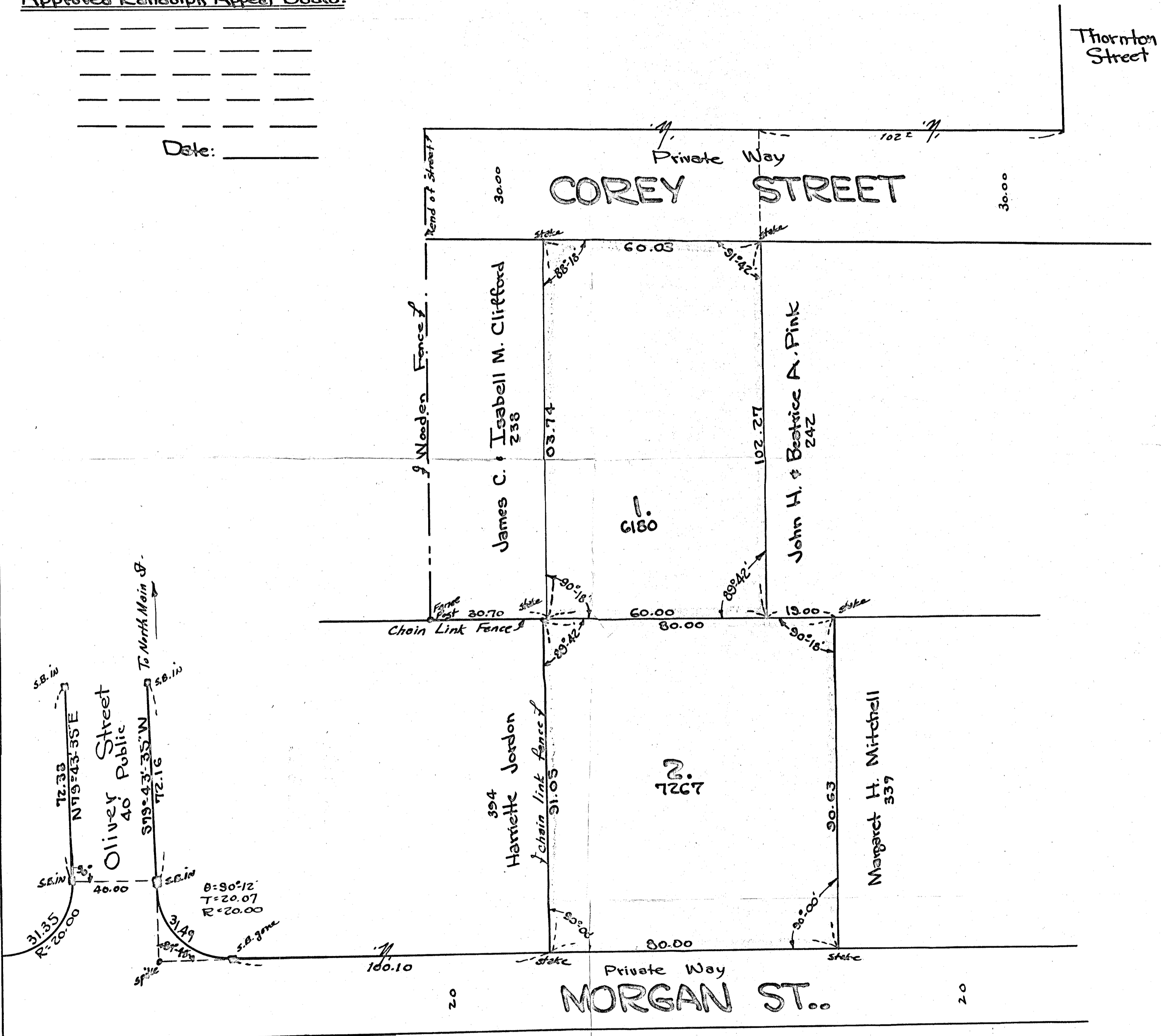
PLAN OF LOTS RANDOLPH, MASS..

Scale 1"=20' May 18, 1955
L.W. DECILLE SURVEYORS, Inc.
Bonded Land Surveyors
1191 North Main St., Randolph, Mass.



Approved Randolph Appeal Board:

Date: _____



I certify that this survey was made on the ground on May 3, 1955 in accordance with the Land Court Instructions of 1950.
May 18, 1955 Lawrence W. Decille Jr.
Surveyor