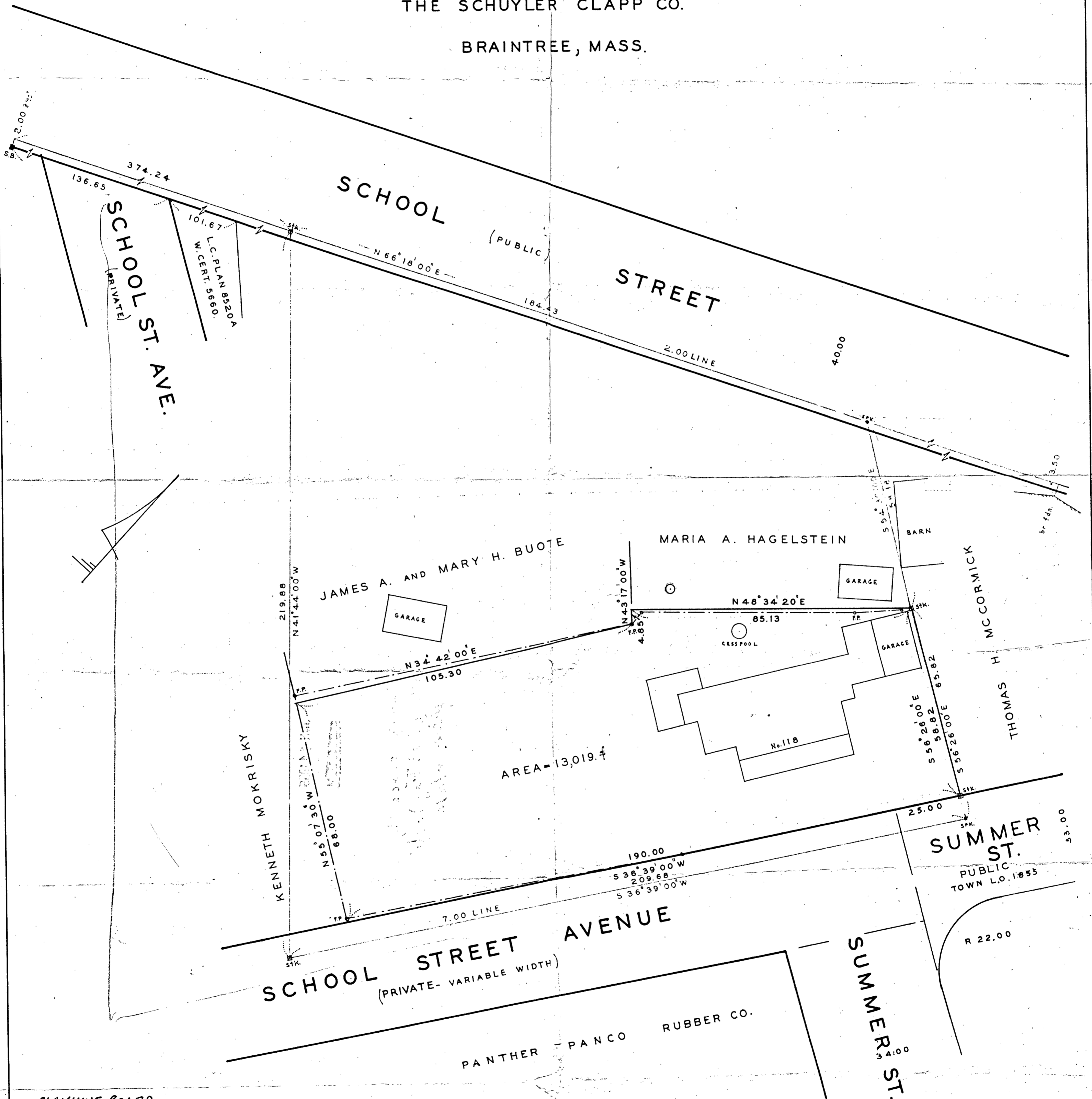


PLAN OF LAND IN
STOUGHTON, NORFOLK CO., MASS.

SCALE: 1" = 20'

APRIL 25, 1955

THE SCHUYLER CLAPP CO.
BRAINTREE, MASS.



PLANNING BOARD
APPROVAL UNDER THE SUBDIVISION CONTROL
LAW NOT REQUIRED. 5 May 1955.

Almando J. Savini
Charles J. Leane
Robt. Hahn

PLANNING BOARD - TOWN OF STOUGHTON

I CERTIFY THAT THIS ACTUAL SURVEY WAS MADE
ON THE GROUND IN ACCORDANCE WITH THE LAND
COURT INSTRUCTIONS OF 1950 ON APRIL 2, 1955.

APRIL 25, 1955: Frederick T. Webb



J.N. 8882

P.C.A.