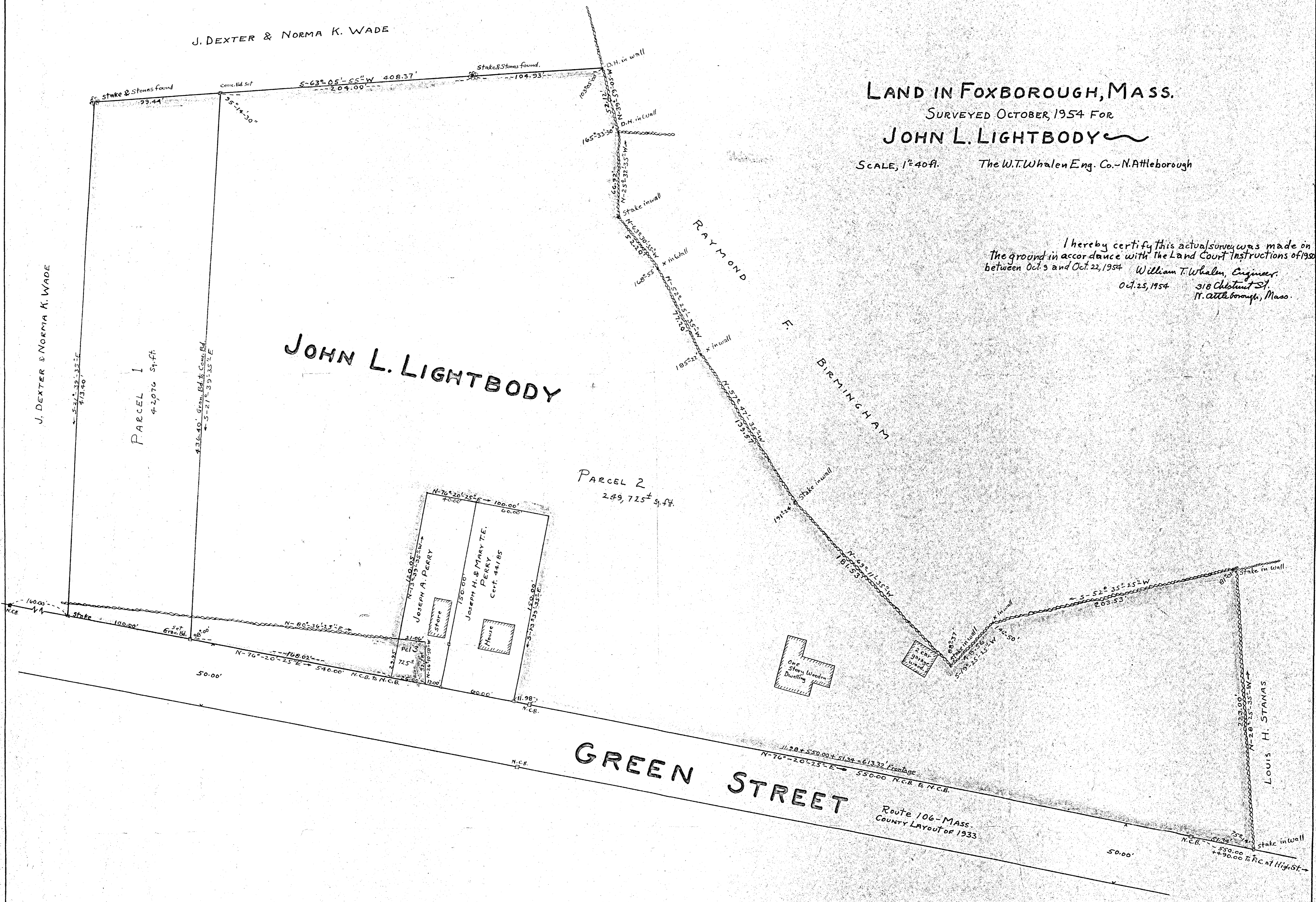


LAND IN FOXBOROUGH, MASS.
 SURVEYED OCTOBER, 1954 FOR
JOHN L. LIGHTBODY

SCALE, 1"=40ft. The W.T. Whalen Eng. Co. - N. Attleborough

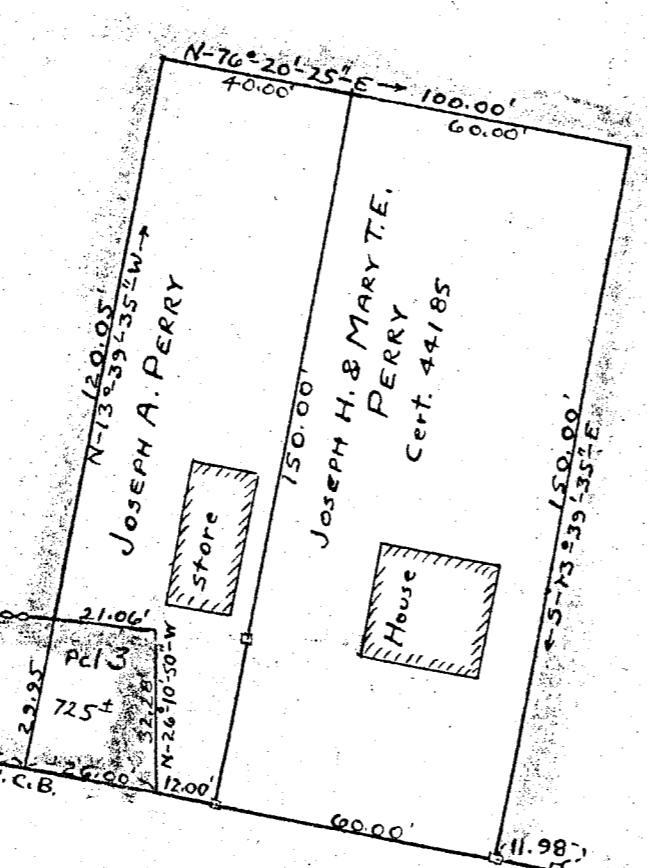
I hereby certify this actual survey was made on
 the ground in accordance with the Land Court instructions of 1952
 between Oct. 3 and Oct. 22, 1954 William T. Whalen, Engineer
 Oct. 25, 1954 318 Chestnut St.
 W. Attleborough, Mass.



JOHN L. LIGHTBODY

PARCEL 1
4,207.6 sq. ft.

PARCEL 2
2,49,725 sq. ft.



| Bearing | Distance | Lat. N | Lat. S | Dep. E | Dep. W |
|-----------------|----------|---------|---------|----------|----------|
| N-76°-20'-53" E | 981.34 | 231.714 | | 953.588 | |
| N-28°-25'-35" W | 233.00 | 196.113 | | | 106.152 |
| S-81°-35'-25" W | 303.53 | | 123.642 | | 161.430 |
| S-78°-25'-35" W | 48.54 | | 45.796 | | 16.143 |
| N-69°-11'-35" W | 181.53 | 65.487 | | | 169.031 |
| N-57°-47'-35" W | 135.57 | 74.434 | | | 118.072 |
| N-53°-24'-35" W | 77.30 | 71.076 | | | 61.184 |
| N-63°-30'-35" W | 52.20 | 43.284 | | | 40.719 |
| N-25°-32'-35" W | 66.92 | 60.372 | | | 28.855 |
| N-39°-59'-05" W | 51.12 | 39.934 | | | 33.421 |
| S-63°-05'-55" E | 408.37 | | 184.763 | | 364.180 |
| S-21°-39'-35" E | 413.40 | | 384.210 | 152.577 | |
| | | 738.411 | 738.411 | 1106.165 | 1106.165 |

APPROVAL NOT REQUIRED
 APPROVED FOXBOROUGH PLANNING BOARD: DATE 10-25-54
 Lawrence A. Carpenter
 David K. Bishop
 John P. Beach
 Donald C. Healy