

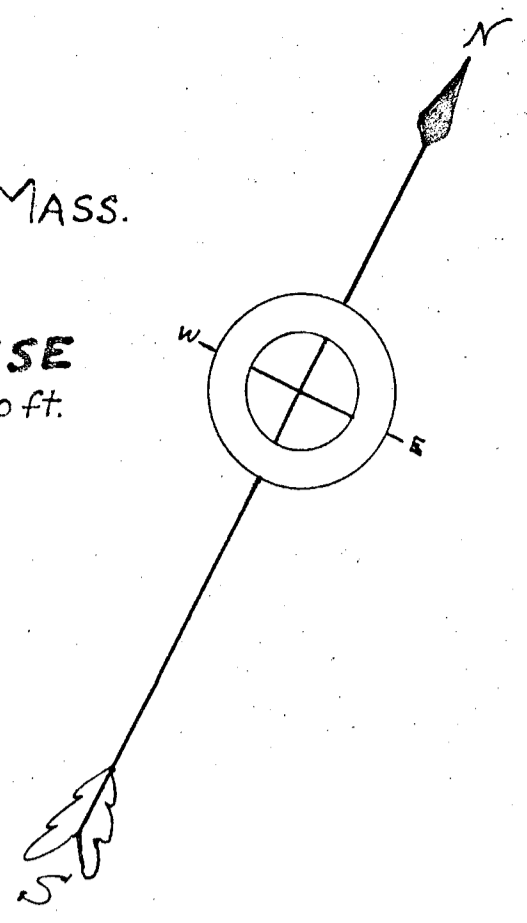
LAND OF CHARLES S. AND MAE MAJOR, IN PLAINVILLE, MASS.

SURVEYED FOR

RALPHE HALL, RICHARD L. HOUGHTON, AND MORINO M. TURINESE

March 28, 1955 by The W.T. Whalen Eng. Co. of N. Attleborough, Mass.

Scale, 1" = 40 ft.



Henry A. Peterson

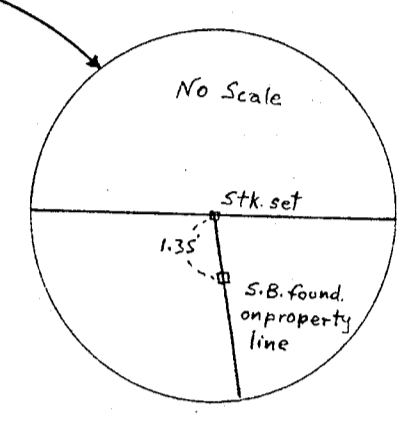
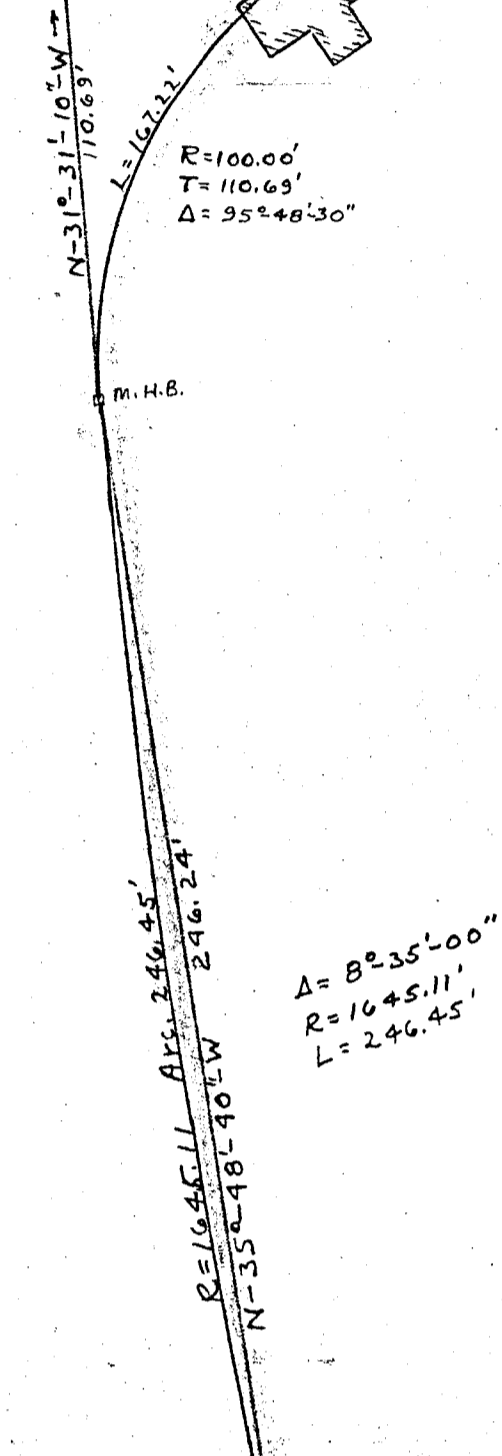
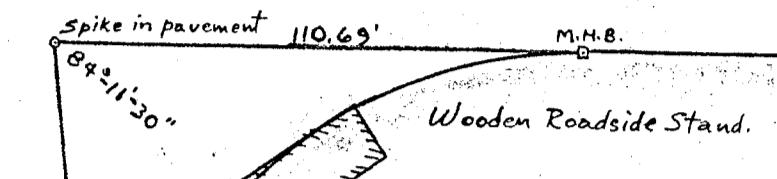
Henry A. Peterson

MESSINGER STREET

1931 HIGHWAY LAYOUT, NORFOLK COUNTY COMMISSIONERS

RTE 106. To FOXBOROUGH →

← TO PLAINVILLE CENTER



PARCEL 2
 Area in Plainville, Norfolk Co. — 8.272 Acres
 Area in N. Attleborough, Bristol Co. — 0.255 Acres (10,270±sq. ft.)

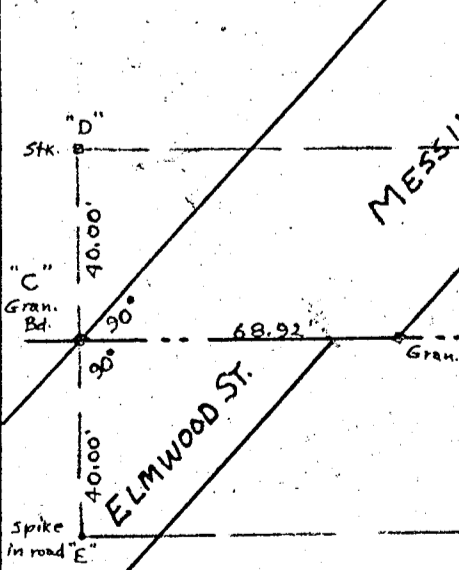
PARCEL 1
 Area in Plainville, Norfolk Co. — 29,717±sq. ft.
 Area in N. Attleborough, Bristol Co. — 3,253±sq. ft.
 38,480

APPROVAL UNDER SUBMISSION CONTROL LAW IS NOT REQUIRED
 Charles S. and Mae Major
 Plainville Board of Selectmen April 10, 1955

Charles P. Boush
 William G. DeLong
 Henry C. Apple

Town Line Data.
 Angle A-B-D = 76°53'10"
 Angle A-B-E = 78°02'10"
 Angle A-B-C = 77°31'10" by Calculation.

Messinger to Taunton St.
 3500±



NORFOLK COUNTY - MASS.

NORTH ATTLEBOROUGH - BRISTOL COUNTY - MASS.

Charles S. and Mae Major - Lot 1, Assessors Plat #37

Charles S. and Mae Major
 Lot 2, Assessors Plat #37

I certify that this actual survey was made on the ground in accordance with the Land Court Instructions of 1950, on or between March 16 and March 21, 1955.
 William T. Whalen, Engineer.
 March 21, 1955

Bearing	Length	N. Lat	S. Lat	E. Dep.	W. Dep.
N-40°06'10"W	543.38	430.924			363.307
N-35°48'40"W	246.24	199.684			149.677
N-31°21'10"W	110.69	94.359			57.868
N-64°17'20"E	471.32	204.477		424.650	
S-55°14'40"E	897.80		732.288	517.920	
S-62°31'20"W	915.75		196.445		377.721
		925.446	929.433	942.576	942.573

George C. Wilkins

FRANCIS J. KELEJ BLVD.

PLAIN STREET 33' Public Way
 Arthur & Eulalie Veruile, and
 Annette & Philomene Charette
 Cert. of Title #411
 Plan 15160

Raymond J., Albert F., and Norman A. Courtois

Thomas A. Boisclair