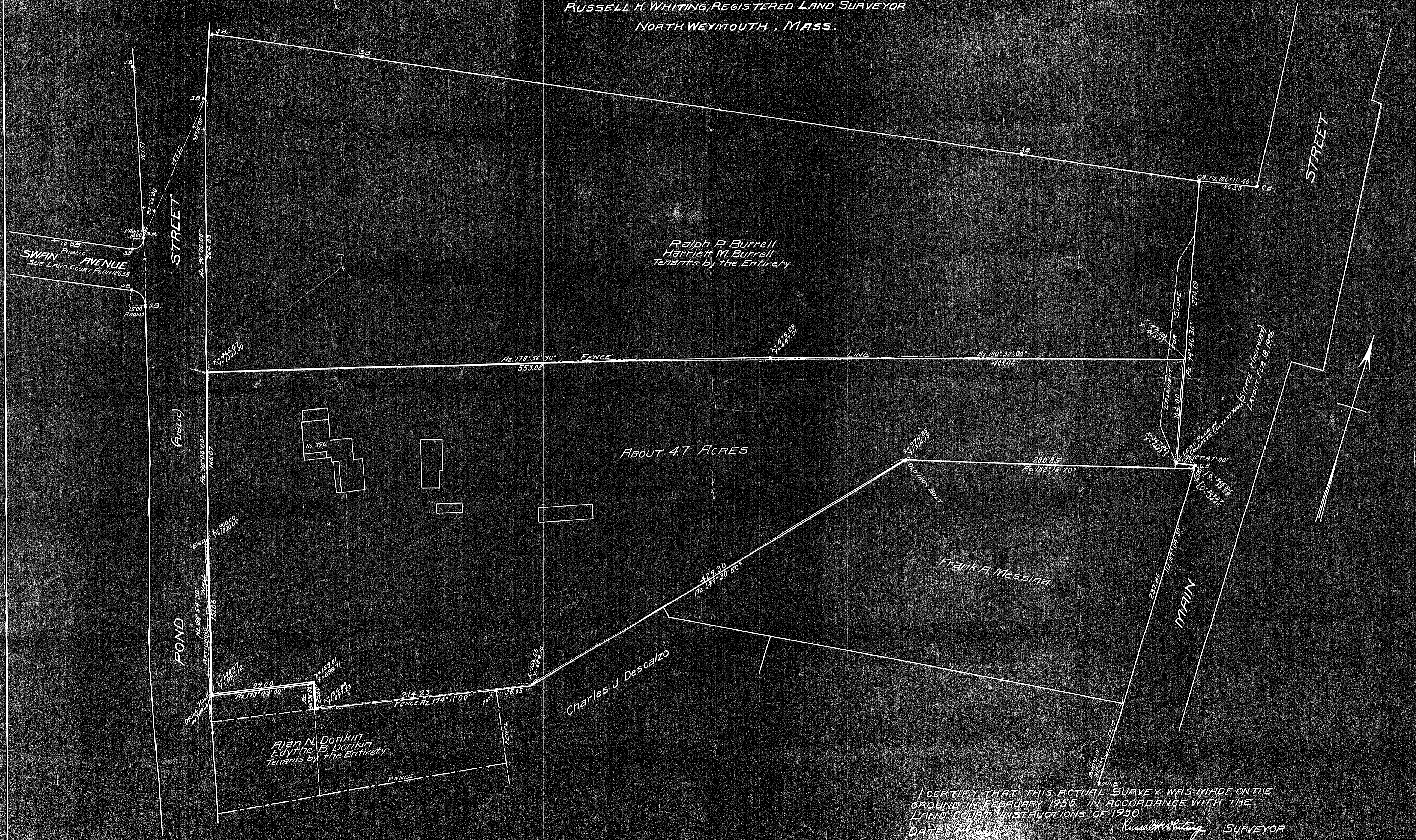


PLAN OF LAND IN  
 WEYMOUTH, MASS.  
 SCALE: 1" = 40' FEB. 23, 1955  
 RUSSELL H. WHITING, REGISTERED LAND SURVEYOR  
 NORTH WEYMOUTH, MASS.



I CERTIFY THAT THIS ACTUAL SURVEY WAS MADE ON THE  
 GROUND IN FEBRUARY 1955 IN ACCORDANCE WITH THE  
 LAND COURT INSTRUCTIONS OF 1950  
 DATE: Feb 23, 1955  
 Russell H. Whiting, SURVEYOR