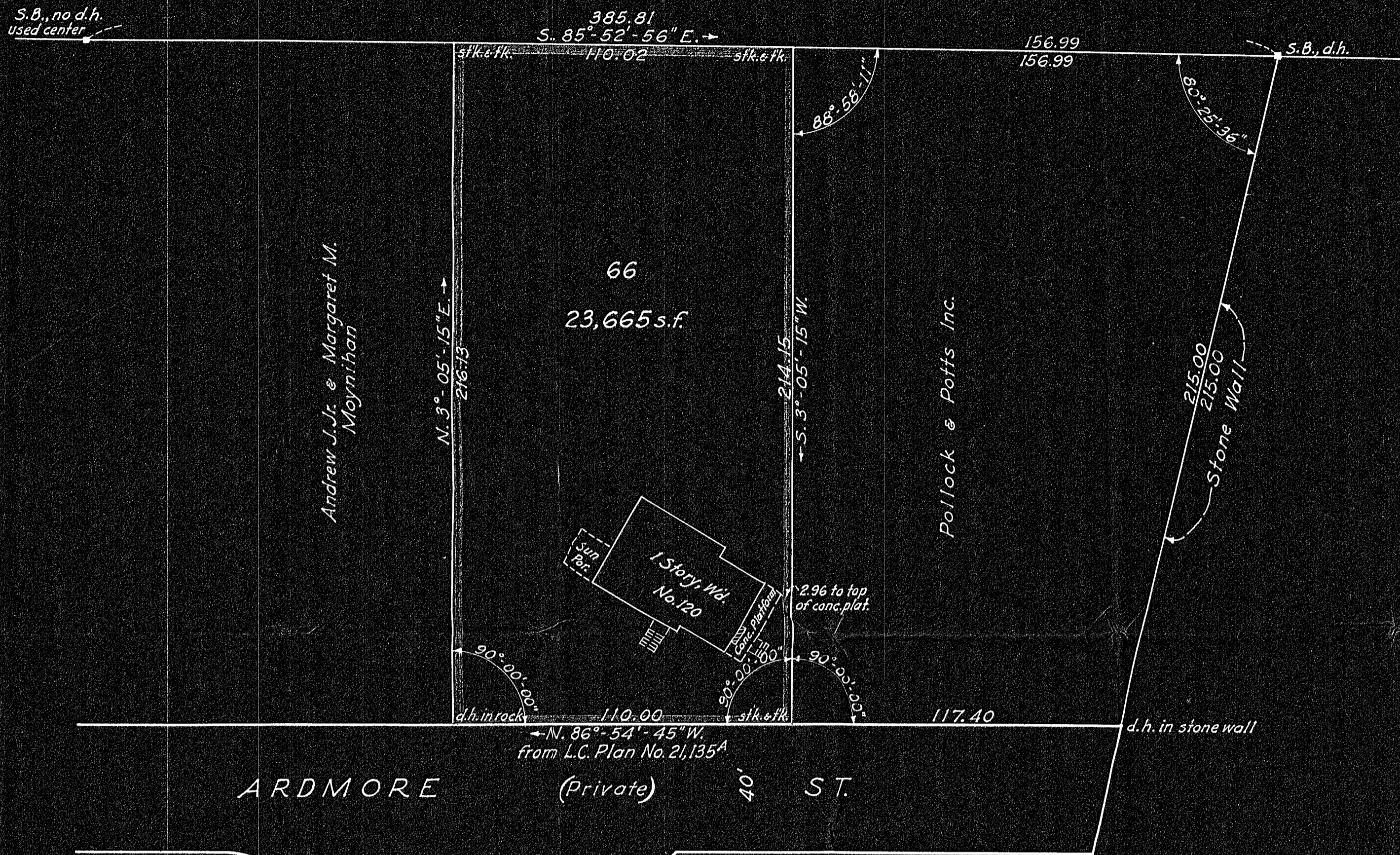
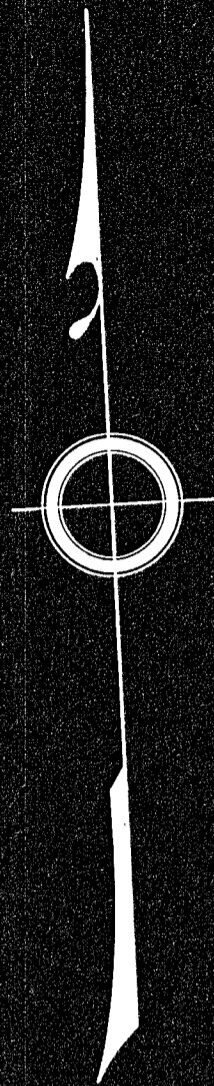


The Commonwealth of Massachusetts



TRAVERSE TABLE

INT. ANGLE	BEARING	DIST.	LAT.		DEP.	
			N.	S.	E.	W.
90-00-00	N. 3-05-15 E.	216.13	215.82		11.64	
88-58-11	S. 85-52-56 E.	110.02		7.90	109.73	
91-01-49	S. 3-05-15 W.	214.15		213.84		11.53
90-00-00	N. 86-54-45 W.	110.00	5.92			109.84
360-00-00			221.74	221.74	121.37	121.37

Approval under Subdivision Control Law not required

Edward J. Brewer
James H. Conroy
George M. Polick
Date
MARCH - 8 - 1955
Needham Planning Board

PLAN OF LAND
= IN =
NEEDHAM, MASS.

Scale: 30 feet to an inch
FEBRUARY 21, 1955
Robert H. Dunning ~ Surveying & Drafting
2 Dow Ave., Arlington

NOTE: For deed see Book 3329, Page 106. Recorded in Norfolk Registry of Deeds which refers to Plan 4771, Book 98 (not used). Plan used is "Plan of Land, Showing Revised Lot Lines" dated Oct. 13, 1952, by McCarthy Engineering Service Inc., Natick, Mass., and filed in Town Engineers Office as "Assessors Plan No. 143A"

I certify that this actual survey was made on the ground in accordance with the Land Court Instructions of 1950 on Feb. 19, 1955.
Feb. 21, 1955

Robert H. Dunning