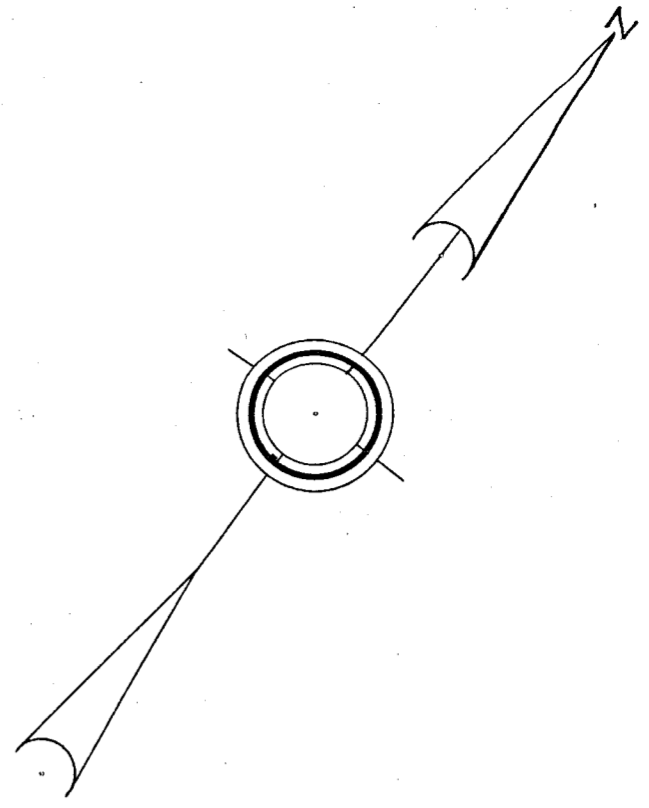
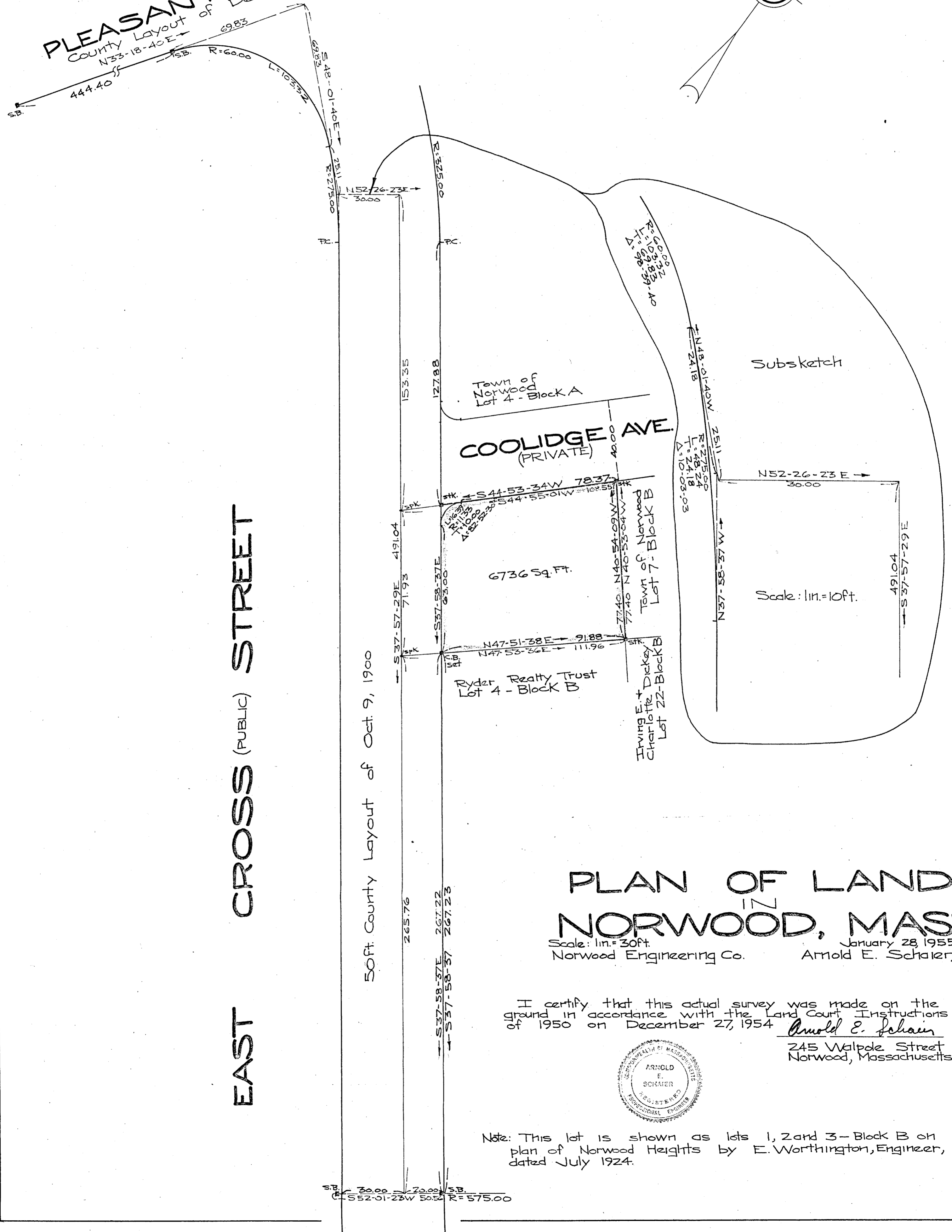


PLEASANT (PUBLIC) ST.  
 COUNTY LAYOUT of Dec. 7, 1937  
 N33-18-40 E →  
 444.40  
 59.83  
 R=60.00  
 L=103.32  
 S48-01-40 E →  
 2511  
 R=275.00



EAST CROSS (PUBLIC) STREET

50ft. County Layout of Oct. 9, 1900



Subsketch

COOLIDGE AVE.  
 (PRIVATE)

6736 Sq. Ft.

Scale: 1 in. = 10 ft.

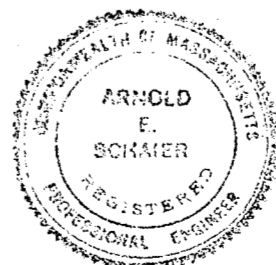
PLAN OF LAND  
 IN  
 NORWOOD, MASS.

Scale: 1 in. = 30 ft.  
 Norwood Engineering Co.

January 28, 1955  
 Arnold E. Schaller, C.E.

I certify that this actual survey was made on the ground in accordance with the Land Court Instructions of 1950 on December 27, 1954

*Arnold E. Schaller*  
 245 Walpole Street  
 Norwood, Massachusetts



Note: This lot is shown as lots 1, 2 and 3 - Block B on plan of Norwood Heights by E. Worthington, Engineer, dated July 1924.

S 30.00 → 70.00 ← S  
 S52-01-23 W 50.00 R=575.00