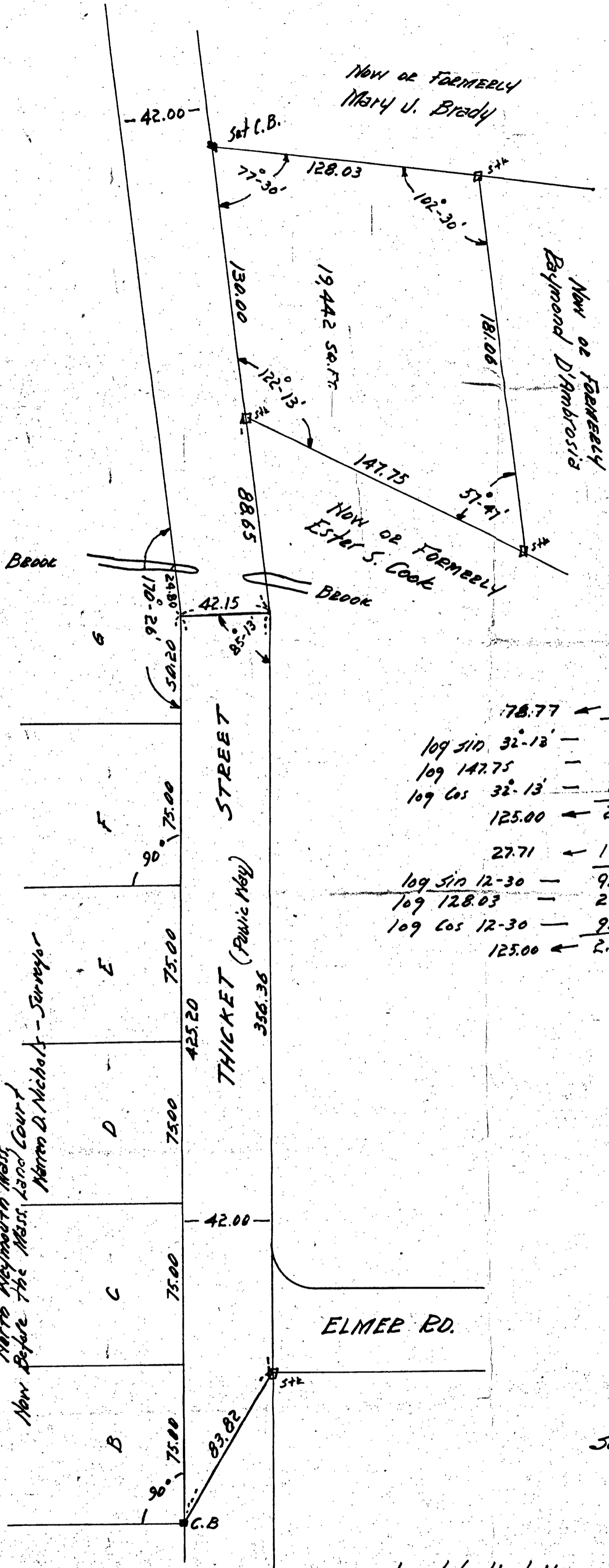


See PLAN OF LAND IN
 SOUTH WEYMOUTH MASS
 SCALE 1"=40' APRIL 25, 1952
 Russell H. Whiting Registered Land Surveyor
 North Weymouth Mass
 Now Before The Mass. Land Court
 Warren D. Nichols - Surveyor



178.77	←	1.8963544	
log sin 32-13	-	9.7268269	
log 147.75	-	2.1695275	
log cos 32-13	-	9.9273899	
125.00	←	2.0969174	
27.71	←	1.4426727	
log sin 12-30	-	9.3353368	
log 128.03	-	2.1073359	
log cos 12-30	-	9.9895815	
125.00	←	2.0969174	

+ 130.00	+ 125.00
+ 78.77	- 125.00
<u>208.77</u>	<u>000.00</u>
+ 27.71	
<u>181.06</u>	
- 181.06	
<u>000.00</u>	

PLAN OF LAND IN
 WEYMOUTH - MASS.
 SCALE 1"=40' DEC. 18, 1954
 WARREN D. NICHOLS - SURVEYOR
 29 SAVILLE ST. QUINCY, MASS.

I certify that this actual survey was made on the ground
 in accordance with the Land Court instructions of 1950.
 Date ^{DEC. 18, 1954} May 4, 1954

Warren D. Nichols Surveyor