

HARRISON STREET (PUBLIC WAY 40 FEET WIDE)

189.62'

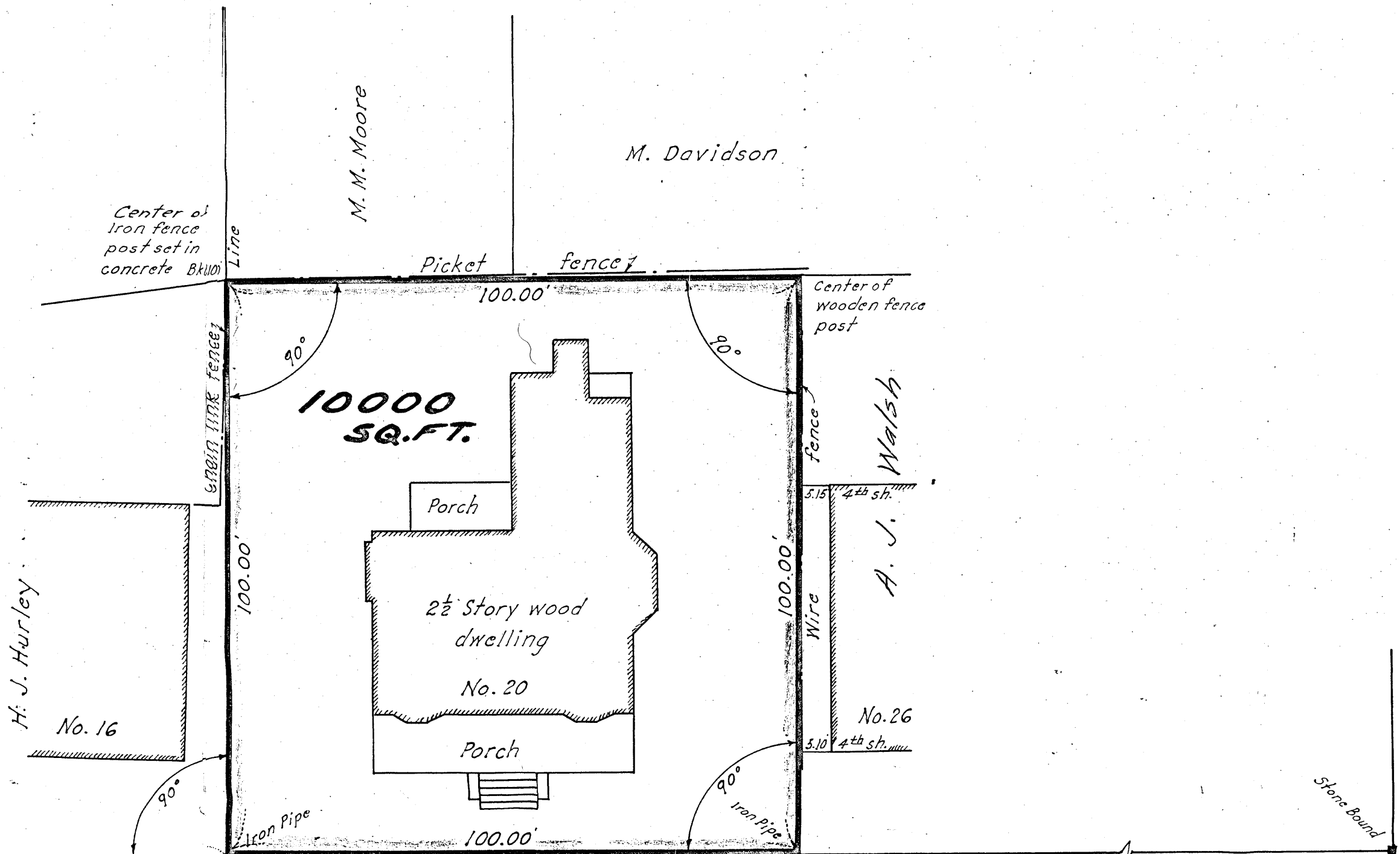
209.41'

308.41'

100.99'

40.00'

L.C. Case No. 15425



10000 SQ.FT.

Porch

2 1/2 Story wood dwelling

No. 20

Porch

H. J. Hurley

No. 16

M. M. Moore

M. Davidson

A. J. Walsh

No. 26

FRANCIS ST.

KENT SQ.

I certify that this actual survey was made on the ground in accordance with Land Court Instructions of 1950 on April 10, 1954.

H. M. Fletcher

PLAN OF LAND BROOKLINE, MASS.

SCALE 1 IN. = 20 FT. APRIL 10, 1954

H. M. FLETCHER, SURVEYOR 95 MILTON AVE., HYDE PARK