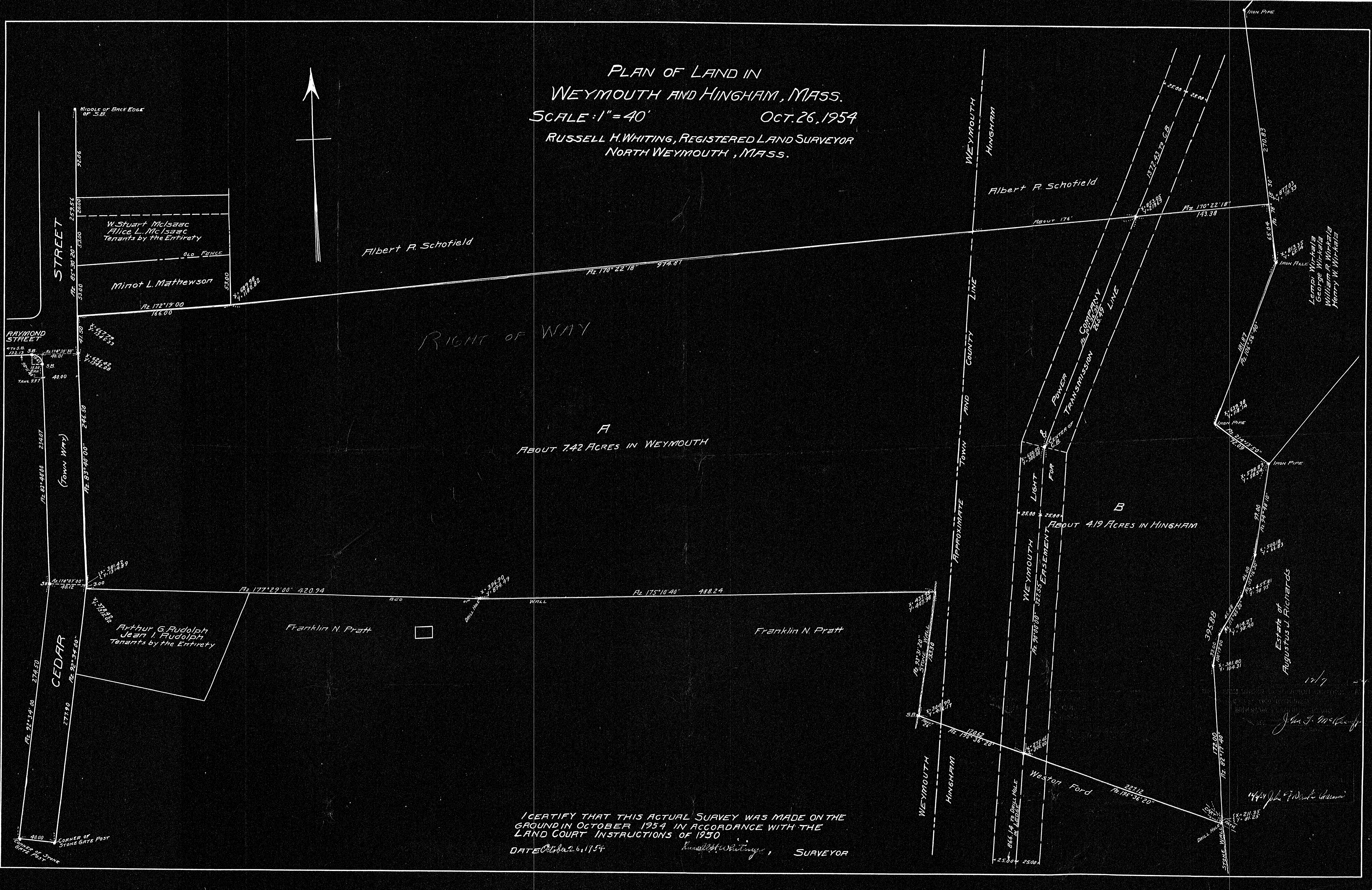
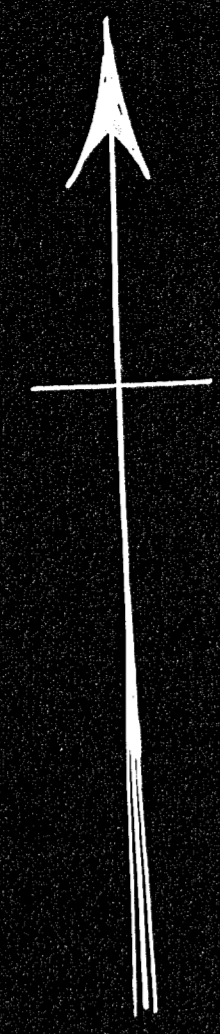


PLAN OF LAND IN
WEYMOUTH AND HINGHAM, MASS.
SCALE: 1" = 40' OCT. 26, 1954
RUSSELL H. WHITING, REGISTERED LAND SURVEYOR
NORTH WEYMOUTH, MASS.



I CERTIFY THAT THIS ACTUAL SURVEY WAS MADE ON THE GROUND IN OCTOBER 1954 IN ACCORDANCE WITH THE LAND COURT INSTRUCTIONS OF 1950
DATE Oct. 26, 1954
Russell H. Whiting, SURVEYOR

John F. McKeefe

John F. White