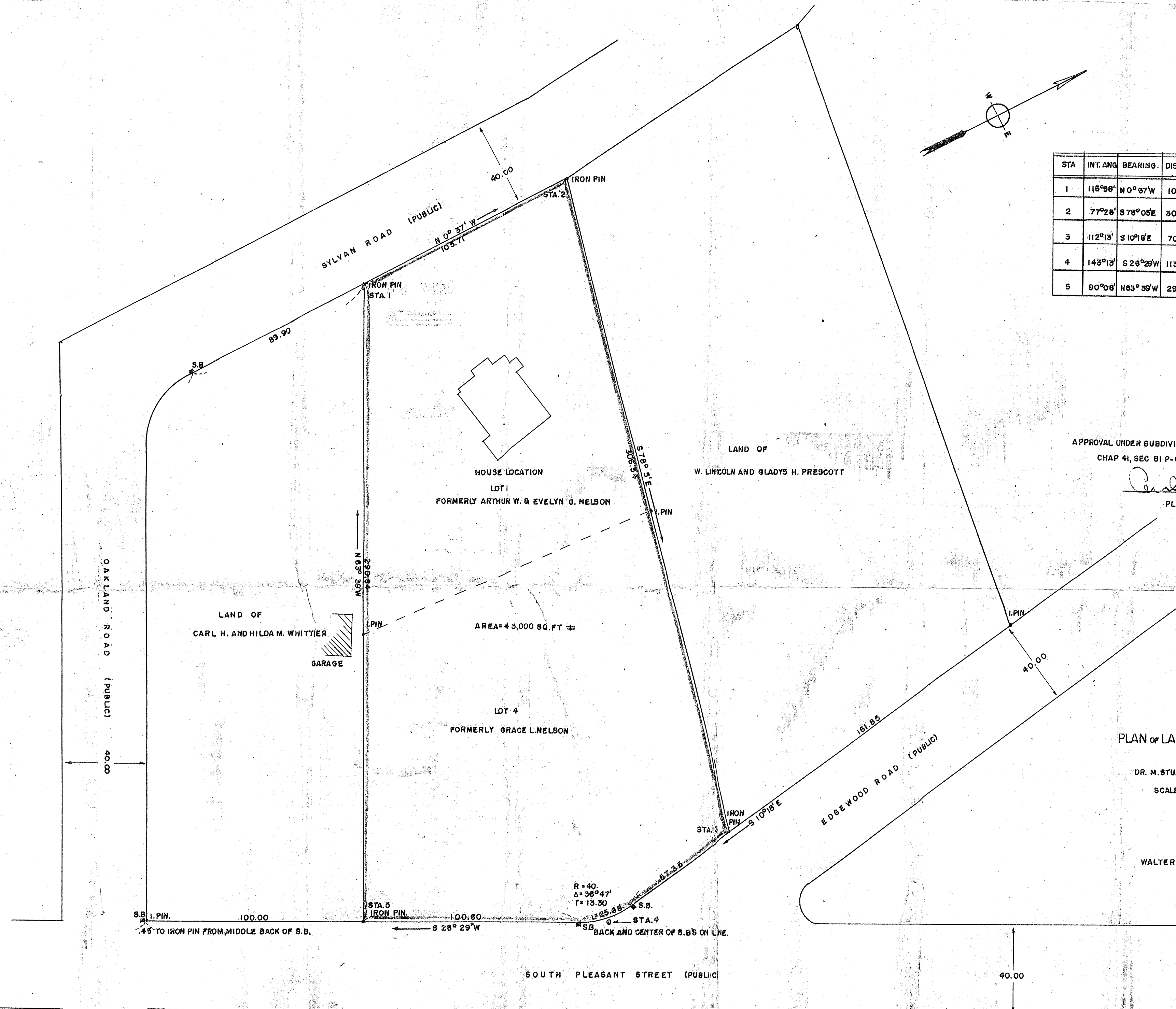


STA	INT. ANG.	BEARING	DISTANCE	SINE & COSINE	LAT.		DEP.	
					N	S	E	W
1	116°58'	N 0° 37' W	108.71	01076 99994	105.70			1.13
2	77°28'	S 78° 05' E	308.34	20649 97845		63.25	299.73	
3	112°13'	S 10° 18' E	70.65	17880 98389		69.51	12.63	
4	143°13'	S 28° 29' W	113.90	44594 89606		101.94		50.79
5	90°08'	N 63° 39' W	290.84	44385 89810	129.00			260.44
					234.70	234.70	312.36	312.36



APPROVAL UNDER SUBDIVISION CONTROL LAW NOT REQUIRED
CHAP 41, SEC 81 P-GEN LAWS

Charles F. Whitman, Jr.
PLANNING BOARD TOWN OF SHARON

Dec. 11, 1954

PLAN OF LAND IN SHARON NORFOLK, CO. MASS

OWNED BY

DR. M. STUART STRONG AND WIFE SYBIL D. STRONG

SCALE 1" = 30' DEC 1, 1954

PLAN AND SURVEY
BY

WALTER L. REEVE, LAND SURVEYOR & CIVIL ENGINEER
SHARON, MASS

I CERTIFY THAT THIS ACTUAL SURVEY WAS MADE ON THE GROUND IN
ACCORDANCE WITH THE LAND COURT INSTRUCTIONS OF 1950 BETWEEN THE
DATES OF NOV 22 & DEC 1, 1954.

Dec 1, 1954

Walter L. Reeve
LAND SURVEYOR & CIVIL ENGINEER

NOTE
ALL STONE BOUNDS AND IRON PINS ARE SET ON
THE PROPERTY AND STREET LINES AS SHOWN ON THIS PLAN.

LOTS 1 & 4 AS SHOWN ABOVE HAVE BEEN
SURVEYED AS ONE PARCEL OF LAND WITH ALL
LINES CLEARED. THIS IS A RE-SURVEY OF LOTS 1 & 4
SURVEYED BY E. GILMORE RICHARDS, OCT 1929. SEE NORFOLK DEEDS BK 1874 - PAGE 437