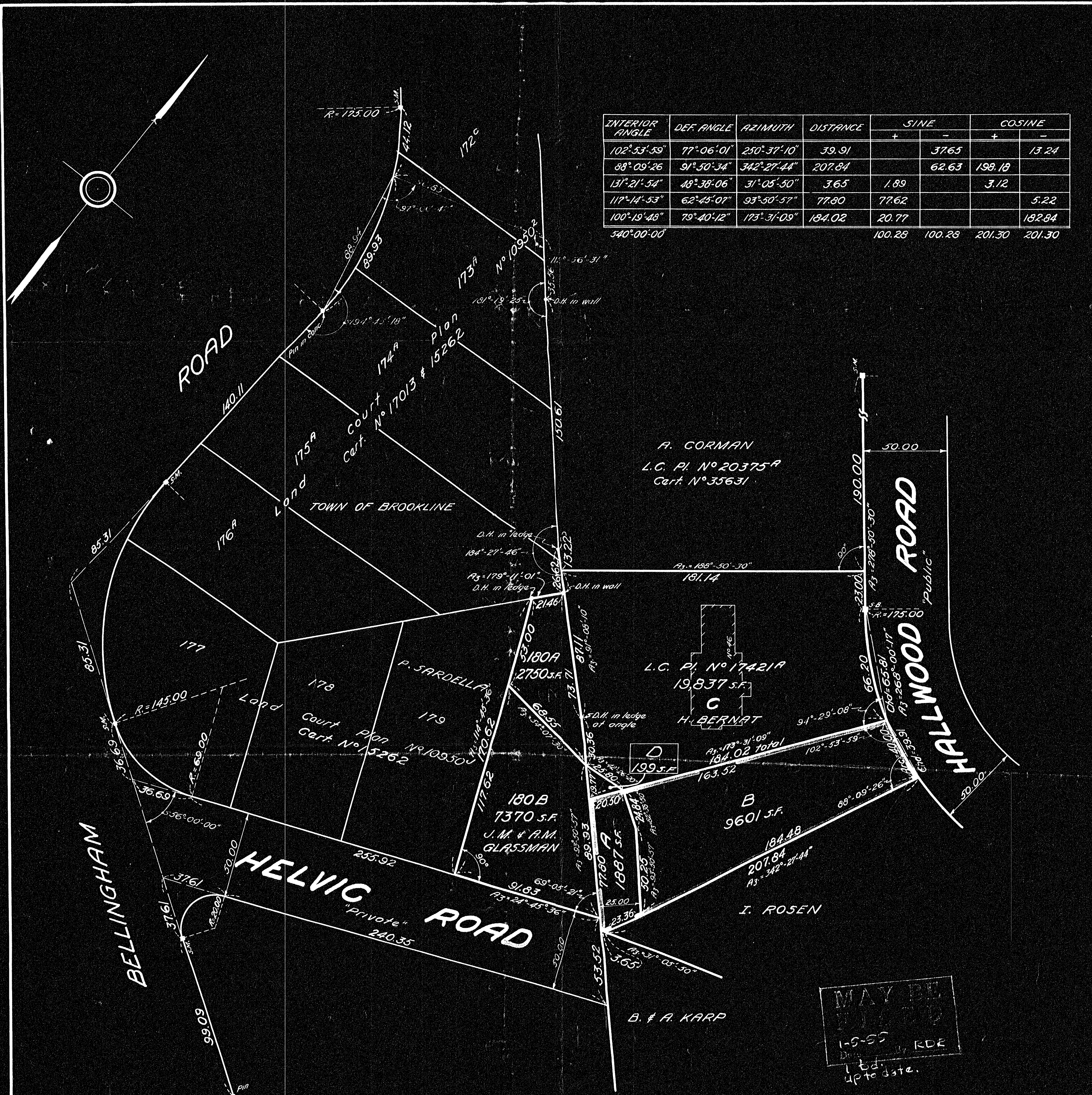


INTERIOR ANGLE	DEF ANGLE	AZIMUTH	DISTANCE	SINE		COSINE	
				+	-	+	-
102° 53' 59"	77° 06' 01"	250° 37' 10"	39.91		3765		13.24
68° 09' 26"	91° 50' 34"	342° 27' 44"	207.84		62.63	198.18	
131° 21' 54"	48° 38' 06"	31° 05' 50"	3.65	1.89		3.12	
117° 14' 53"	62° 45' 07"	93° 50' 57"	77.80	77.62			5.22
100° 19' 48"	79° 40' 12"	175° 31' 09"	184.02	20.77			182.84
340° 00' 00"				100.28	100.28	201.30	201.30



MAY BE  
1-9-55  
KDE  
1 E.D.  
4/10/55

**NOTE:**  
 Lot 180A is to be conveyed to H. BERNAT & become part of lot C  
 Lots A and D are to be conveyed to GLASSMAN and become part of lot 180B  
 Lot B is property of H. BERNAT and is to become and be a part of lot C.

We certify that this actual survey was made on the ground in accordance with the Land Court Instructions of 1950 on April 20, 1954  
 May 6, 1954  
 Henry F. Bryant & Son, Inc.  
 46 White Place, Brookline  
 By: *Ralph A. Jones*

Approval under subdivision control law not required  
 May 13, 1954  
 By: *Walter D. Moine*  
 Engineer and Secretary of  
 Brookline Planning Board

#25532  
 BROOKLINE PL. 89A

# PLAN OF LAND IN BROOKLINE ~ MASS.

Scale: 1 inch = 40 ft.  
 May 6, 1954  
 Henry F. Bryant & Son, Inc.  
 Engineers ~ Brookline, Mass.