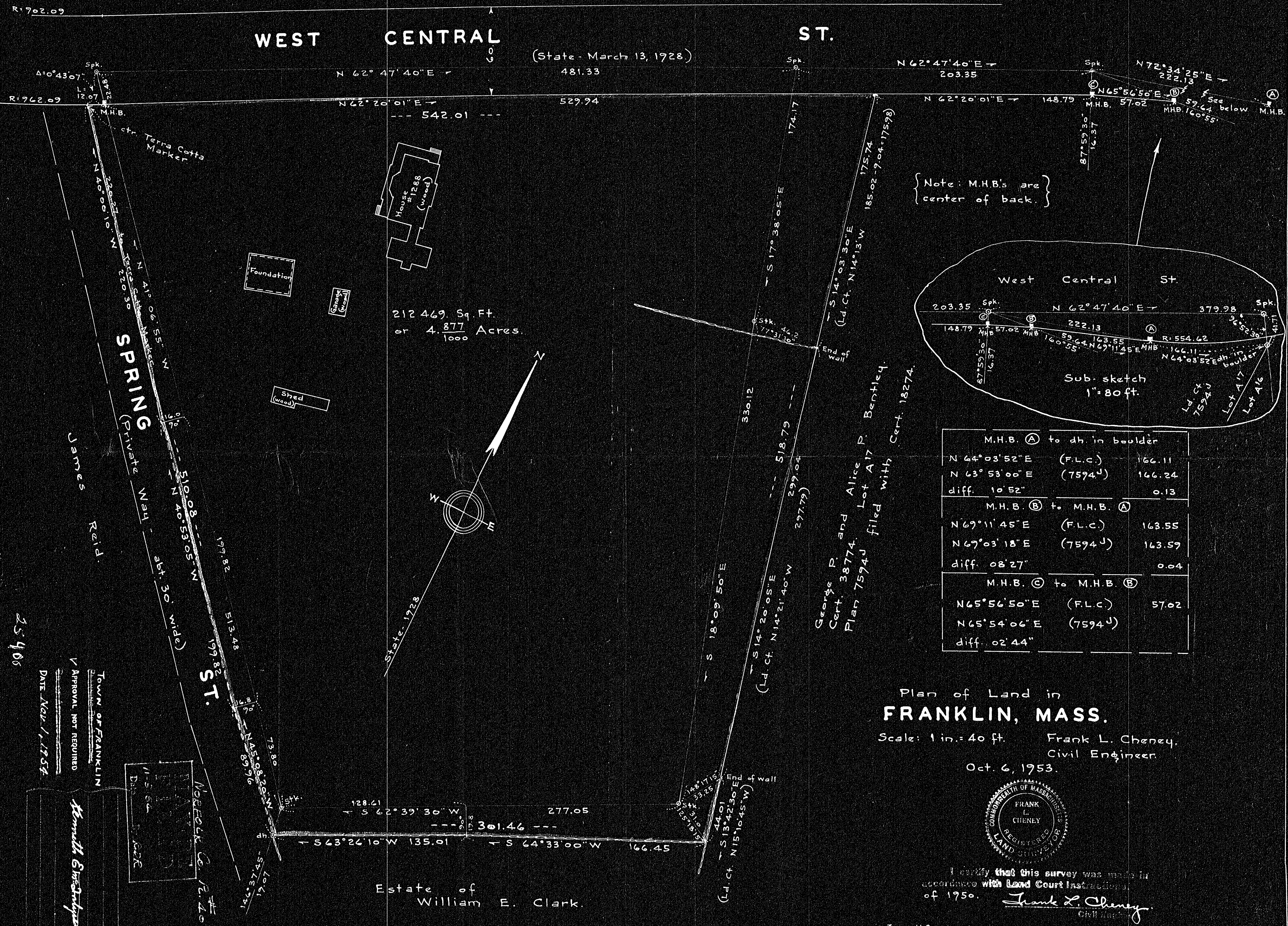


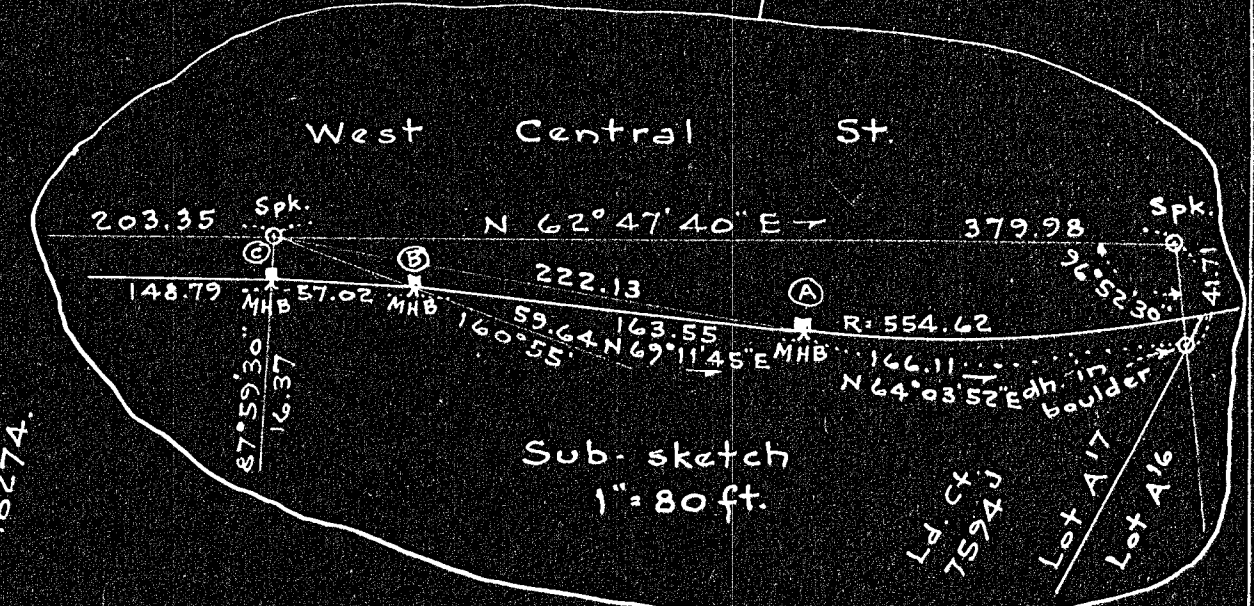
WEST CENTRAL ST.

(State - March 13, 1928.)



212,469 Sq. Ft.
or 4.877 Acres.
1000

{ Note: M.H.B.'s are center of back. }

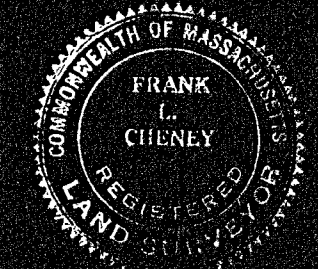


M.H.B. (A) to dh. in boulder		
N 64° 03' 52" E	(F.L.C.)	166.11
N 63° 53' 00" E	(7594 ^J)	166.24
diff.		0.13
M.H.B. (B) to M.H.B. (A)		
N 69° 11' 45" E	(F.L.C.)	163.55
N 69° 03' 18" E	(7594 ^J)	163.59
diff.		0.04
M.H.B. (C) to M.H.B. (B)		
N 65° 56' 50" E	(F.L.C.)	57.02
N 65° 54' 06" E	(7594 ^J)	
diff.		02' 44"

George P. and Alice P. Bentley.
Cert. 38774. Lot A17
Plan 7594J filed with Cert. 18274.

Plan of Land in FRANKLIN, MASS.

Scale: 1 in. = 40 ft. Frank L. Cheney, Civil Engineer.
Oct. 6, 1953.



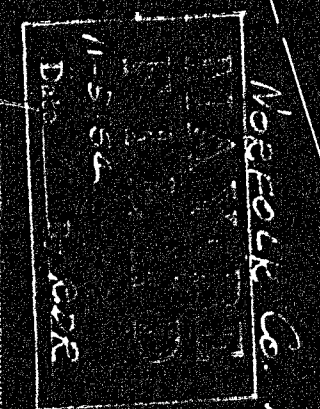
I certify that this survey was made in accordance with Land Court Instructions of 1950. Frank L. Cheney, Civil Engineer.

I certify that the monuments are the same as the date of survey, Nov. 2, 1954. Frank L. Cheney.

Estate of William E. Clark.

25406

Town of Franklin
Approval Not Required
Date Nov. 1, 1954



Kenneth G. S. Jones