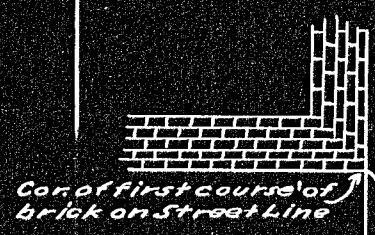


1 story brick building
at cor. of Sea Street



715.0'

33.0

90°

33.0

TURNER PUBLIC ST.

MACY PUBLIC ST.

229.50

See L.A. Case
205567

90°

S.M. 15.0

33.0

215.0

Edward J. Boyd
et ux. Beatrice M.

Alexander E. Jenks
et ux. Isabelle M.

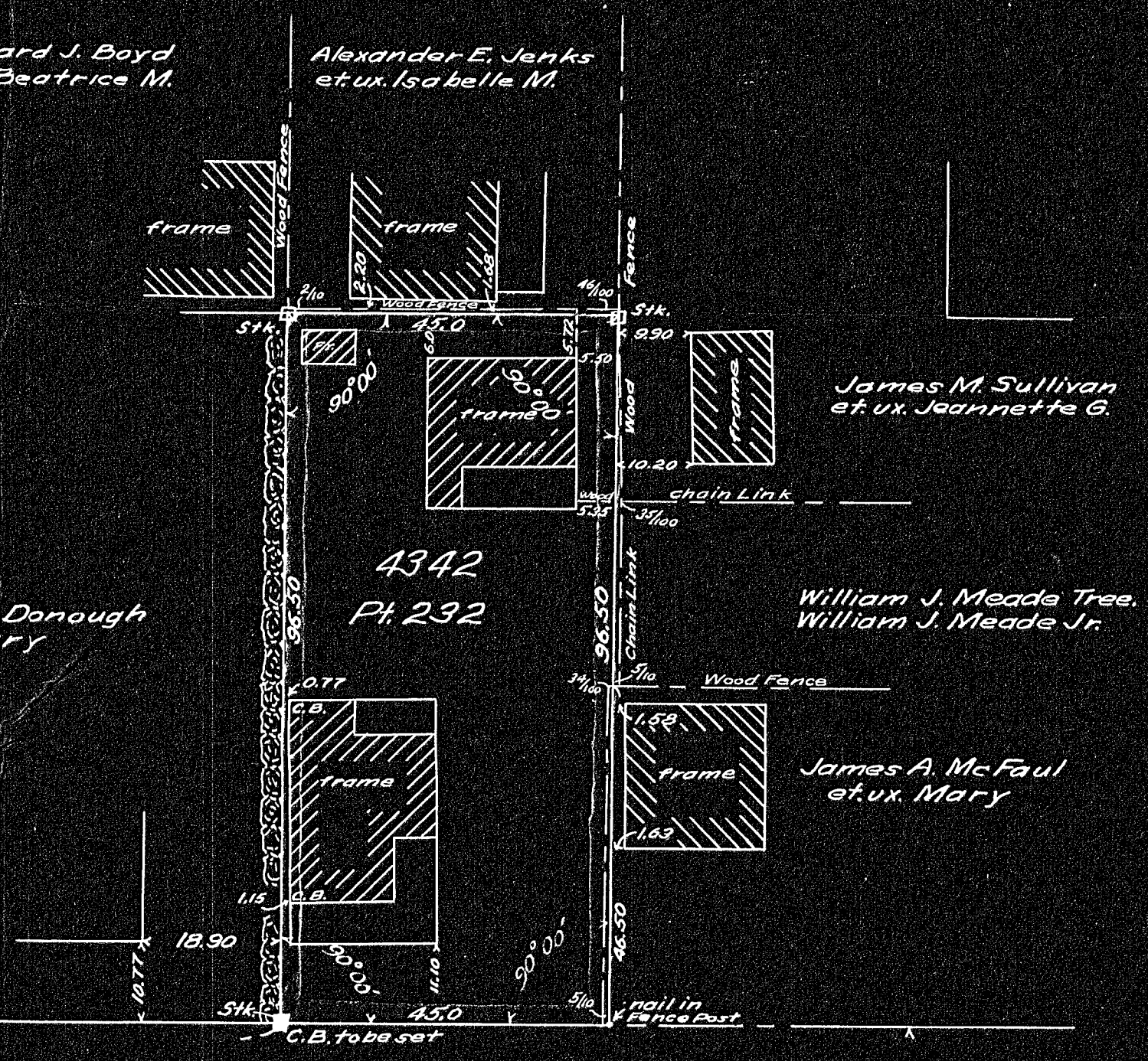


James M. Sullivan
et ux. Jeannette G.

John R. Mc Donough
et ux. Mary

4342
Pt. 232

William J. Meade Tree,
William J. Meade Jr.



DARROW PUBLIC STREET

400

400

Plan of Land in Quincy, Mass.
Scale 20 feet to an inch
Dec. 16, 1953
Ernest W. Branch Inc., Civil Eng's.
11 Adams Building, Quincy

I certify that this actual survey was made on
the ground in accordance with Land Court
instructions of 1950

Dec. 16, 1953 Robert J. Booth Engineer