

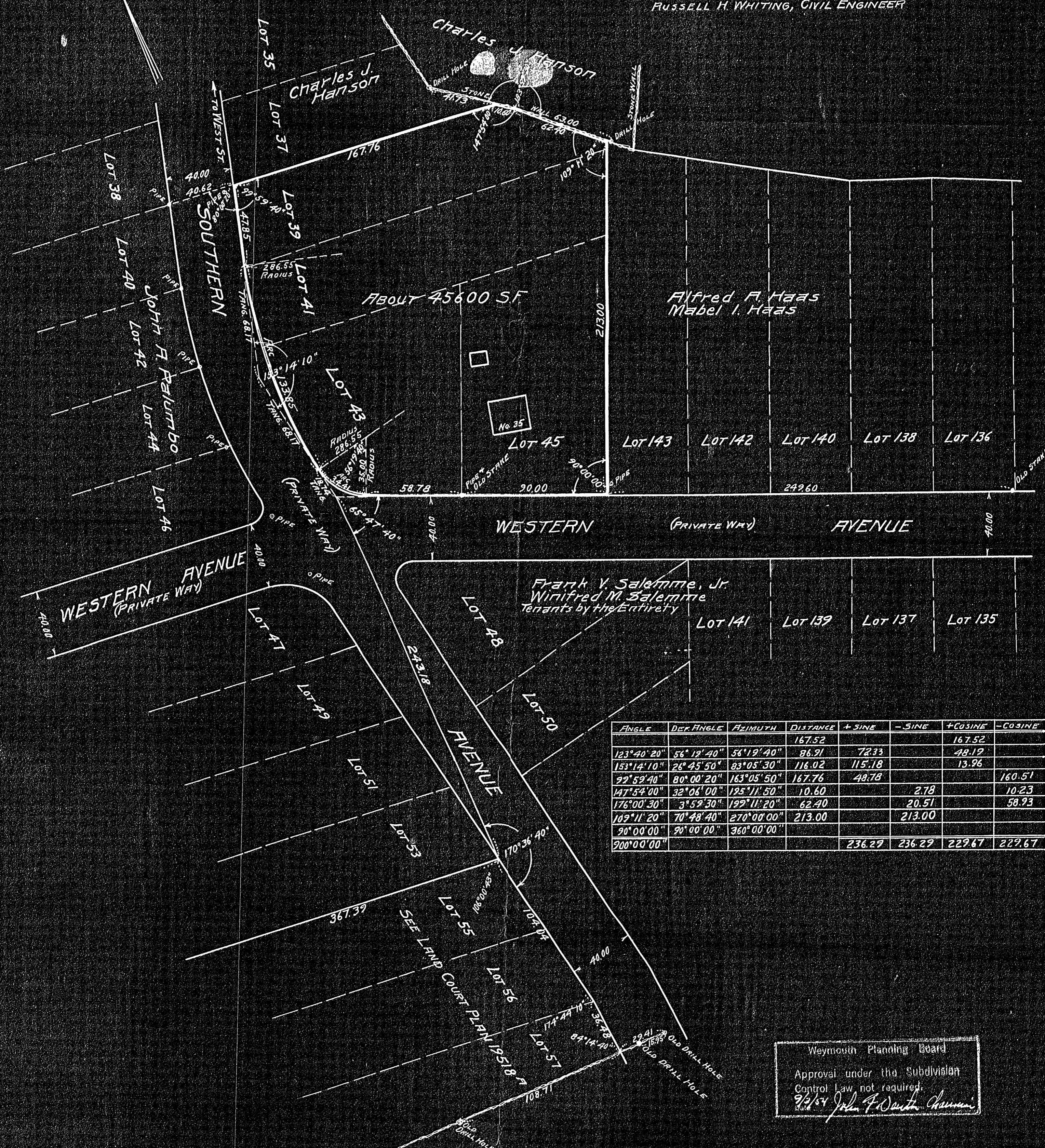
# PLAN OF LAND IN WEYMOUTH, MASS.

SCALE: 1" = 40'

SEPT. 2, 1954

RUSSELL H. WHITING, REGISTERED LAND SURVEYOR  
NORTH WEYMOUTH, MASS.

NOTE: SEE PLAN OF WEYMOUTH ACRES No. 3  
DATED DECEMBER 15, 1910 AND MADE BY  
RUSSELL H. WHITING, CIVIL ENGINEER



ANGLE	DEF ANGLE	AZIMUTH	DISTANCE	+ SINE	- SINE	+ COSINE	- COSINE
			167.52			167.52	
123° 40' 20"	56° 12' 40"	56° 19' 40"	86.21	72.33		48.12	
153° 14' 10"	26° 45' 50"	83° 05' 30"	116.02	115.18		13.96	
99° 52' 40"	80° 00' 20"	163° 05' 50"	167.76	48.78			160.51
147° 54' 00"	32° 06' 00"	125° 11' 50"	10.60		2.78		10.23
176° 00' 30"	3° 52' 30"	122° 11' 20"	62.40		20.51		58.93
109° 11' 20"	70° 48' 40"	270° 00' 00"	213.00		213.00		
90° 00' 00"	90° 00' 00"	360° 00' 00"					
900° 00' 00"				236.29	236.29	229.67	229.67

Weymouth Planning Board  
Approval under the Subdivision  
Control Law not required.  
9/2/54 John F. Weston Chairman

I CERTIFY THAT THIS ACTUAL SURVEY WAS MADE  
ON THE GROUND IN AUGUST 1954 IN ACCORDANCE WITH  
THE LAND COURT INSTRUCTIONS OF 1950

DATE: September 2, 1954

Russell H. Whiting, SURVEYOR