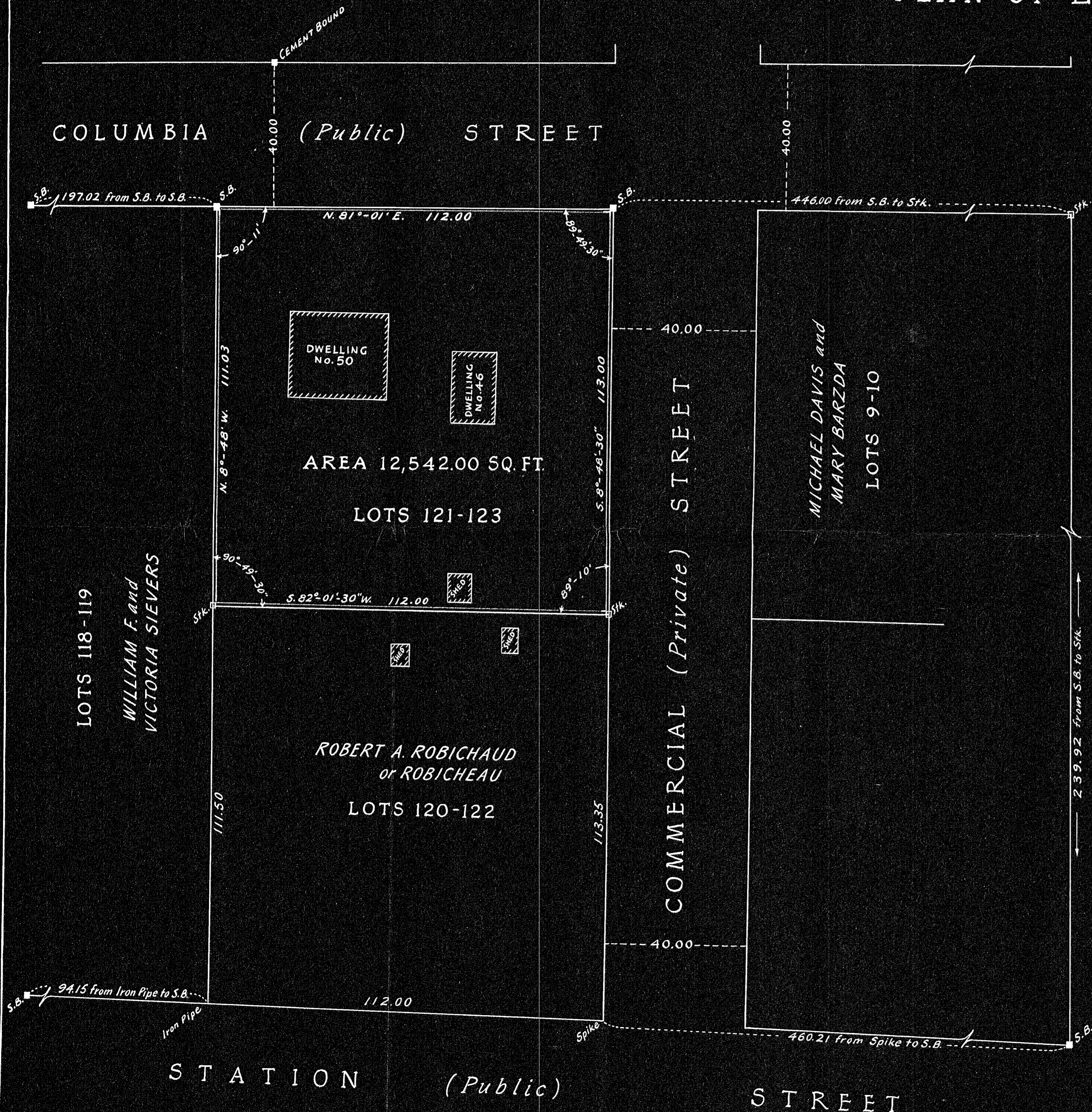
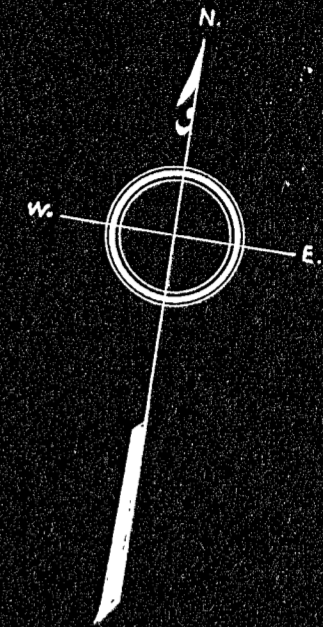


PLAN OF LAND IN STOUGHTON, MASS.

SCALE 20 FT.=1 IN. - MAY 5, 1954

Walter G. Pratt, Surveyor - 90 Lincoln St., Stoughton, Mass.



AZIMUTH	Distance	Latitude		Departure	
		N	S	E	W
N. 81°-01'-00" E.	112.00	17.487		110.625	
S. 8°-48'-30" E.	113.00		111.666	17.302	
S. 82°-01'-30" W.	112.00		15.538		110.915
N. 8°-48'-00" W.	111.03	109.722			16.985
TOTALS	448.03	127.209	127.204	127.927	127.900

I certify that this actual survey was made on the ground in accordance with the Land Court Instructions of 1950
 May 5, 1954 Walter G. Pratt, Surveyor.