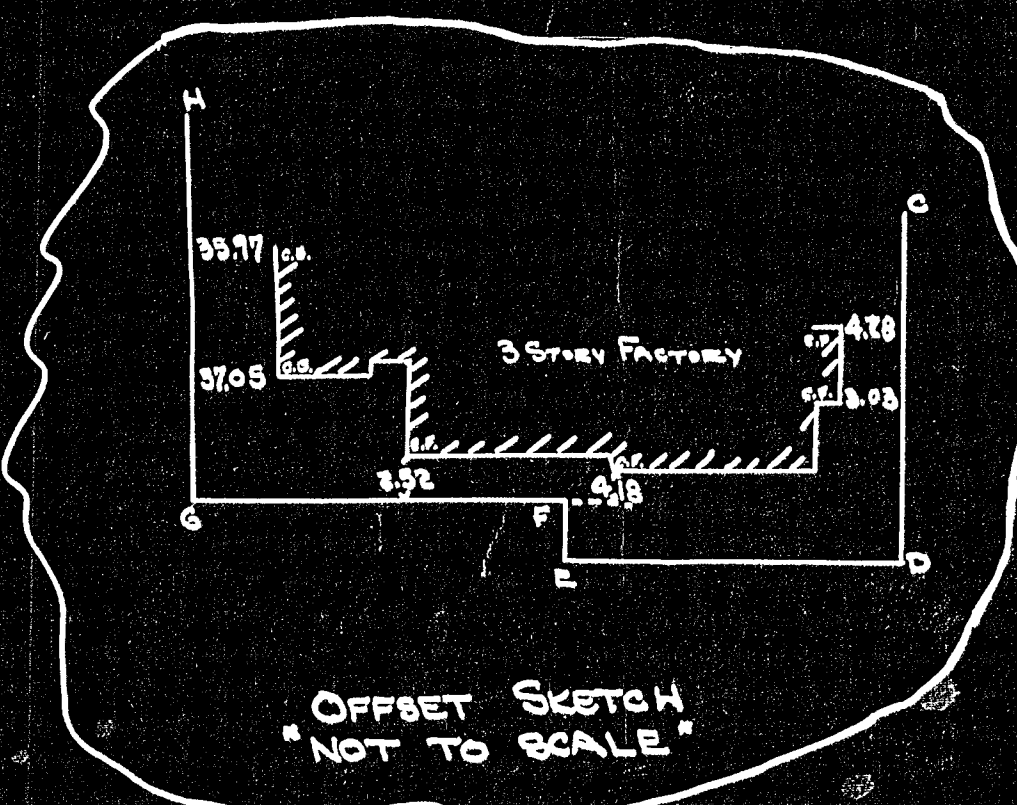
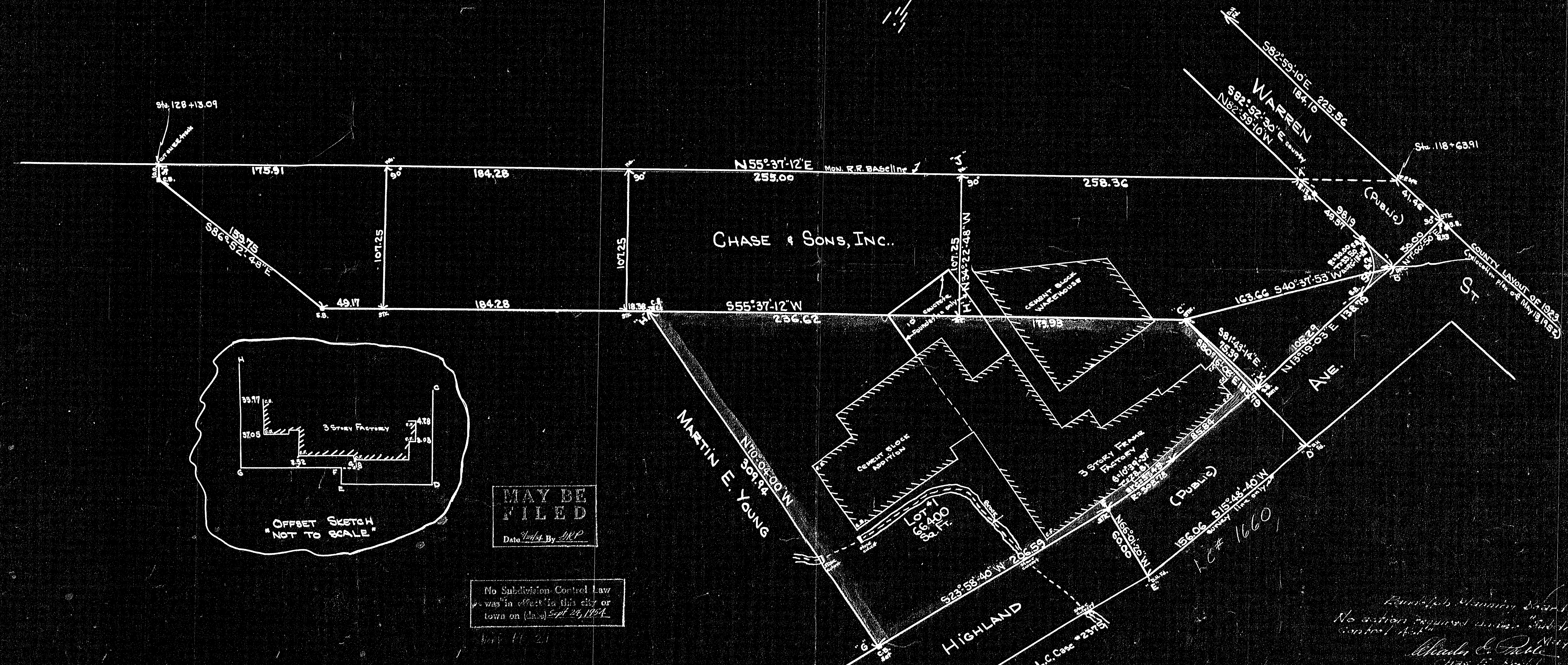
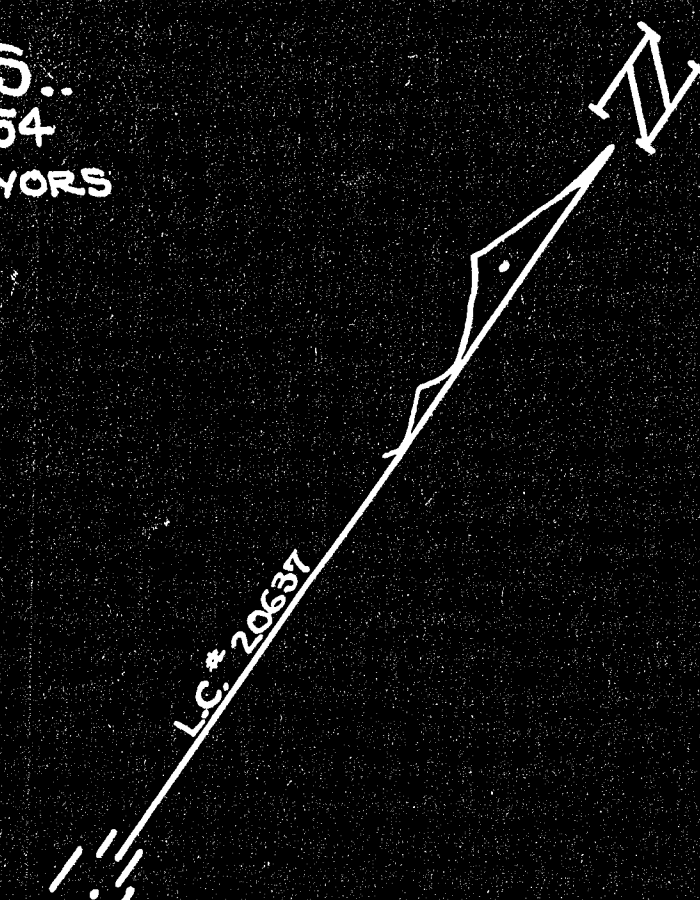


PLAN OF LAND
IN
RANDOLPH, MASS.
SCALE 1"=40' MARCH 20, 1954
L.W. DeCELLE & SONS SURVEYORS
1191 NORTH MAIN ST.
RANDOLPH



MAY BE FILED
Date Filed By JRP

No Subdivision Control Law was in effect in this city or town on (date) Sept 25, 1954

SURVEY TRANSVERSE

Sta.	BEARING	Dist.	N ⁺	S ⁻	E ⁺	W ⁻
A	S82°51'10"E	98.19	—	11.989	97.455	—
B	S40°37'53"W	163.66	—	124.203	—	106.573
C	S80°16'08"E	135.79	—	22.953	133.837	—
D	S15°48'40"W	156.06	—	150.155	—	42.521
E	NG6°01'20"W	60.00	24.382	—	—	54.822
F	S23°58'40"W	206.59	—	188.761	—	83.954
G	N70°04'00"W	309.94	105.666	—	—	291.371
H	N55°37'12"E	236.62	133.614	—	195.285	—
I	N34°22'48"W	107.25	88.514	—	—	60.561
J	N55°37'12"E	258.36	145.890	—	213.221	—
TOTAL			498.066	498.061	639.804	639.802

LOCUS TRANSVERSE

Sta.	BEARING	Dist.	N ⁺	S ⁻	E ⁺	W ⁻
Pl.	S23°58'40"W	235.40	—	215.035	—	95.662
G	N70°04'00"W	309.94	105.666	—	—	291.371
H	N55°37'12"E	410.55	231.828	—	338.831	—
C	S81°43'14"E	75.39	—	10.856	74.604	—
K	S13°19'03"W	114.65	—	111.566	—	20.409
TOTAL			337.494	337.507	413.435	413.442

Randolph Planning Board
No action required under Subdivision Control Act
March 25, 1954
Charles E. Pile
Chairman

I hereby certify that this actual survey was made on the ground in accordance with Land Court Instructions of 1950 on or between February 2, 1954 + March 15, 1954.
Lawrence W. DeCelle, Jr. Surveyor
MARCH 20, 1954

25309