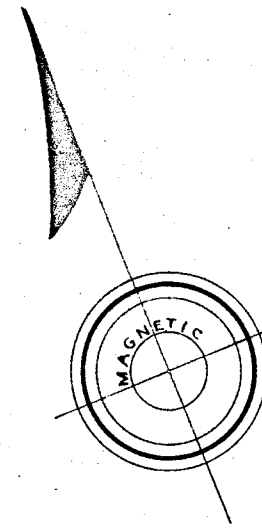
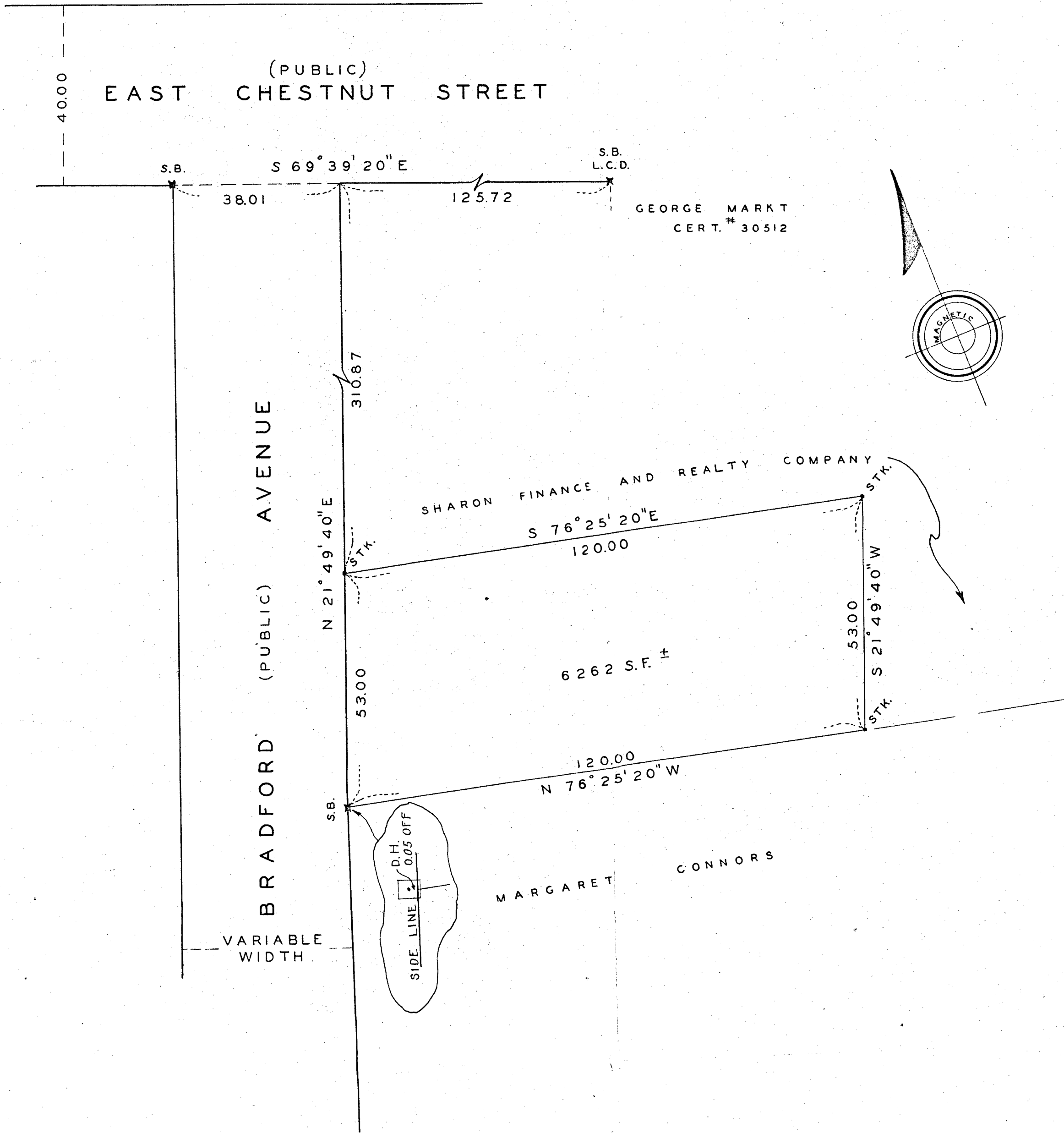


PLAN OF LAND IN
SHARON
 NORFOLK COUNTY, MASS.

SCALE: 1" = 20' FEB. 17, 1954

THE SCHUYLER CLAPP CO.
 BRAintree, MASS.



MASS. G.L. CHAP. 41 SEC. 81P
 APPROVAL UNDER THE SUBDIVISION CONTROL
 LAW NOT REQUIRED May 11 1954.

Richard H. Williams, Clerk

PLANNING BOARD TOWN OF SHARON

I CERTIFY THAT THIS ACTUAL SURVEY
 WAS MADE ON THE GROUND IN ACCORDANCE
 WITH THE LAND COURT INSTRUCTIONS
 OF 1950 ON FEBRUARY 9, 1954.

Frederick T. West