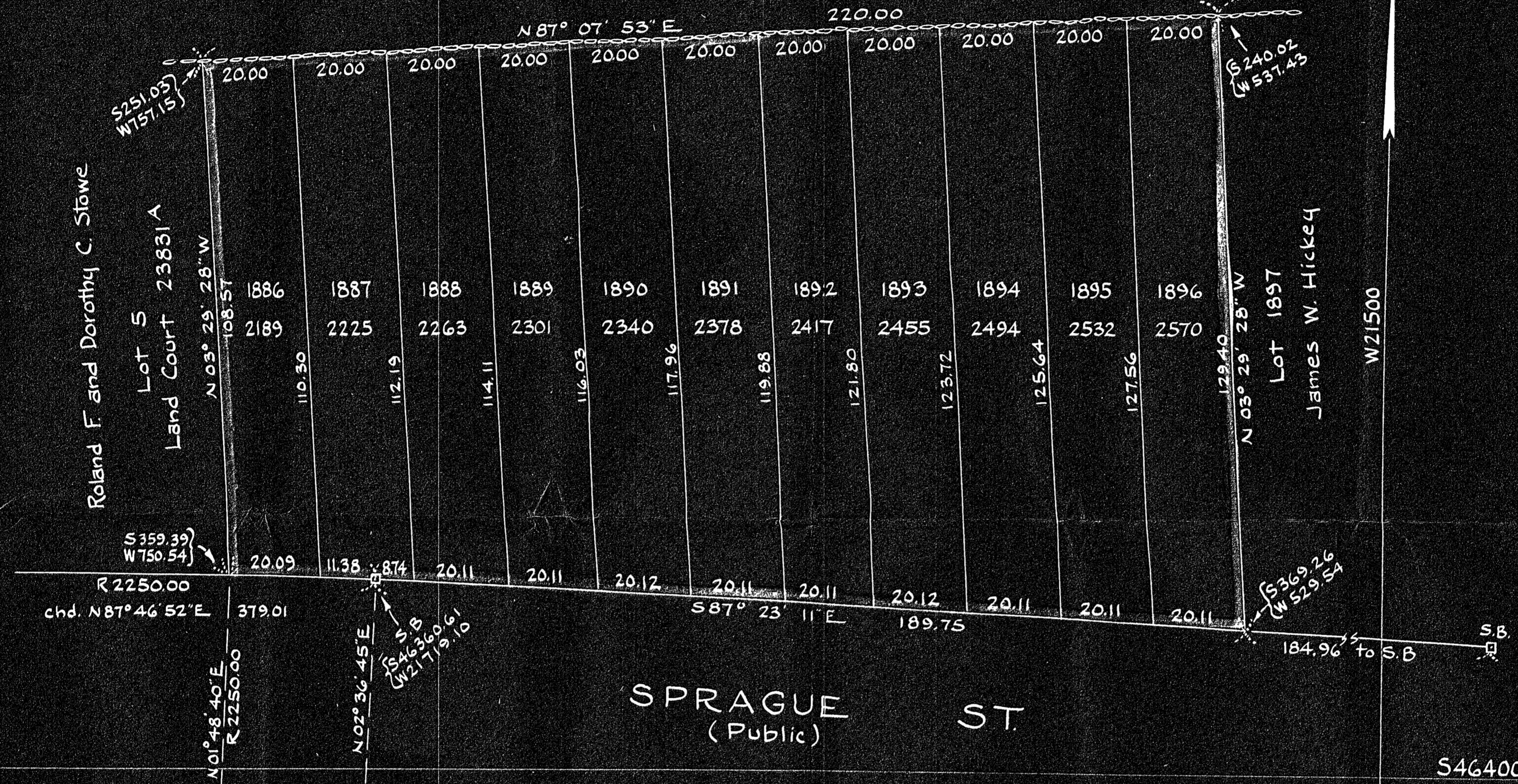


S46200

New York, New Haven & Hartford Railroad Co.



Roland F. and Dorothy C. Stowe
Lot 5
Land Court 23831 A

James W. Hickey
Lot 1897

SPRAGUE ST.
(Public)

Approval under Subdivision Control
Law not required.
DEDHAM PLANNING BOARD
Nancy J. Dubicki
Charles Bartlett Cox

Plan of Land in
DEDHAM, MASS.

Scale: 1 inch = 20 feet

E. W. Pilling
Engineer

June 28, 1954

I certify that this plan was made in
accordance with Land Court instructions of 1950
E. W. Pilling
Civil Engineer