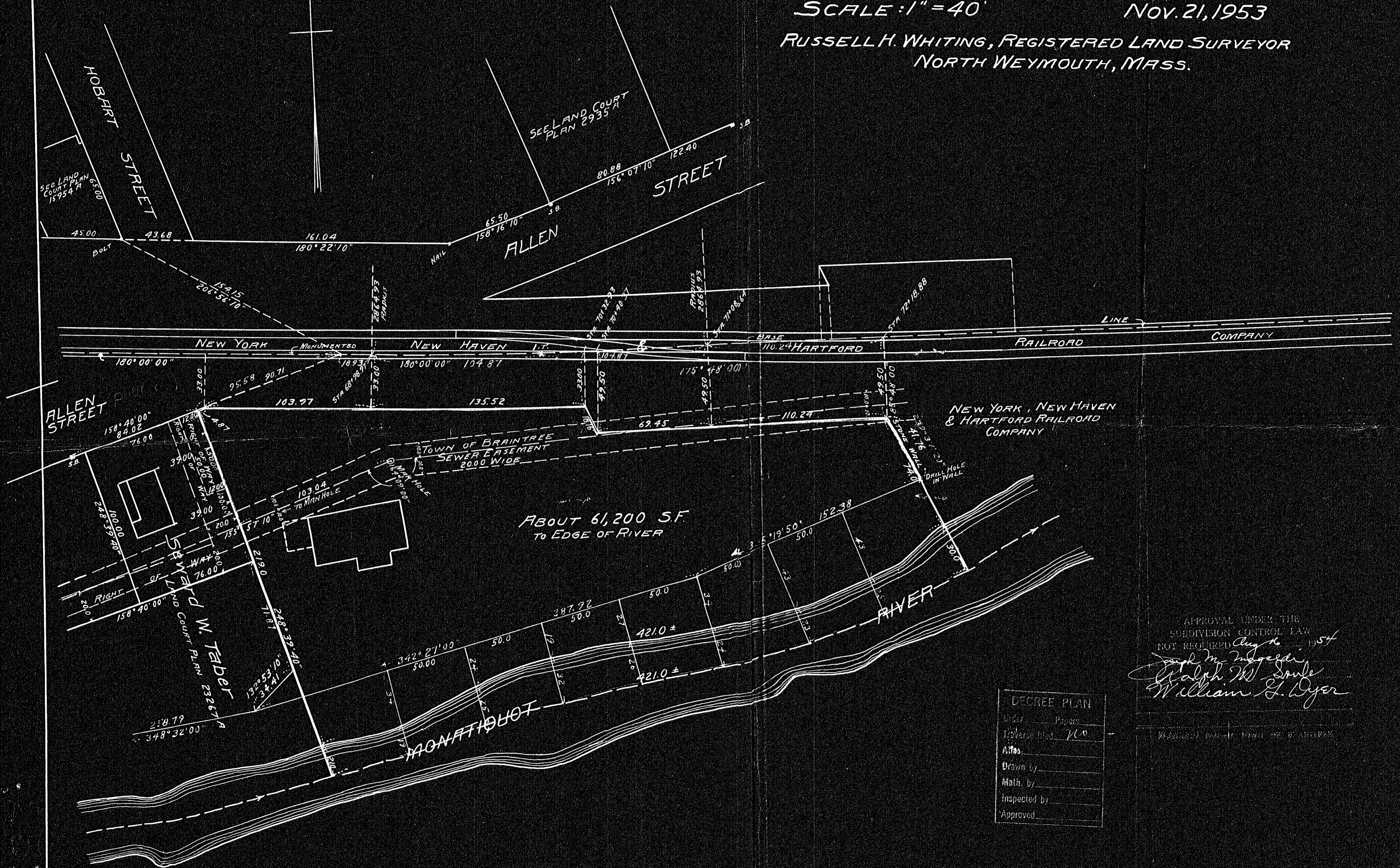


PLAN OF LAND IN
BRAINTREE, MASS.

SCALE: 1" = 40' NOV. 21, 1953
RUSSELL H. WHITING, REGISTERED LAND SURVEYOR
NORTH WEYMOUTH, MASS.



APPROVAL UNDER THE
SUBDIVISION CONTROL LAW
NOT REQUIRED *Aug 10 1954*
Ralph W. Soule
William E. Dyer

DEGREE PLAN	
Order	Plan
Inverse	100
Area	
Drawn by	
Math. by	
Inspected by	
Approved	

I CERTIFY THAT THIS ACTUAL SURVEY WAS MADE ON THE
GROUND IN ACCORDANCE WITH THE LAND COURT INSTRUCTIONS
OF 1950, BETWEEN AUGUST 1948 AND NOVEMBER 1953
DATE: November 21, 1953
Russell H. Whiting, SURVEYOR

H. 2008 BRAINTREE
8/30/54 C.D.H.
25261