

PLAN OF LAND IN
BRAINTREE, MASS.

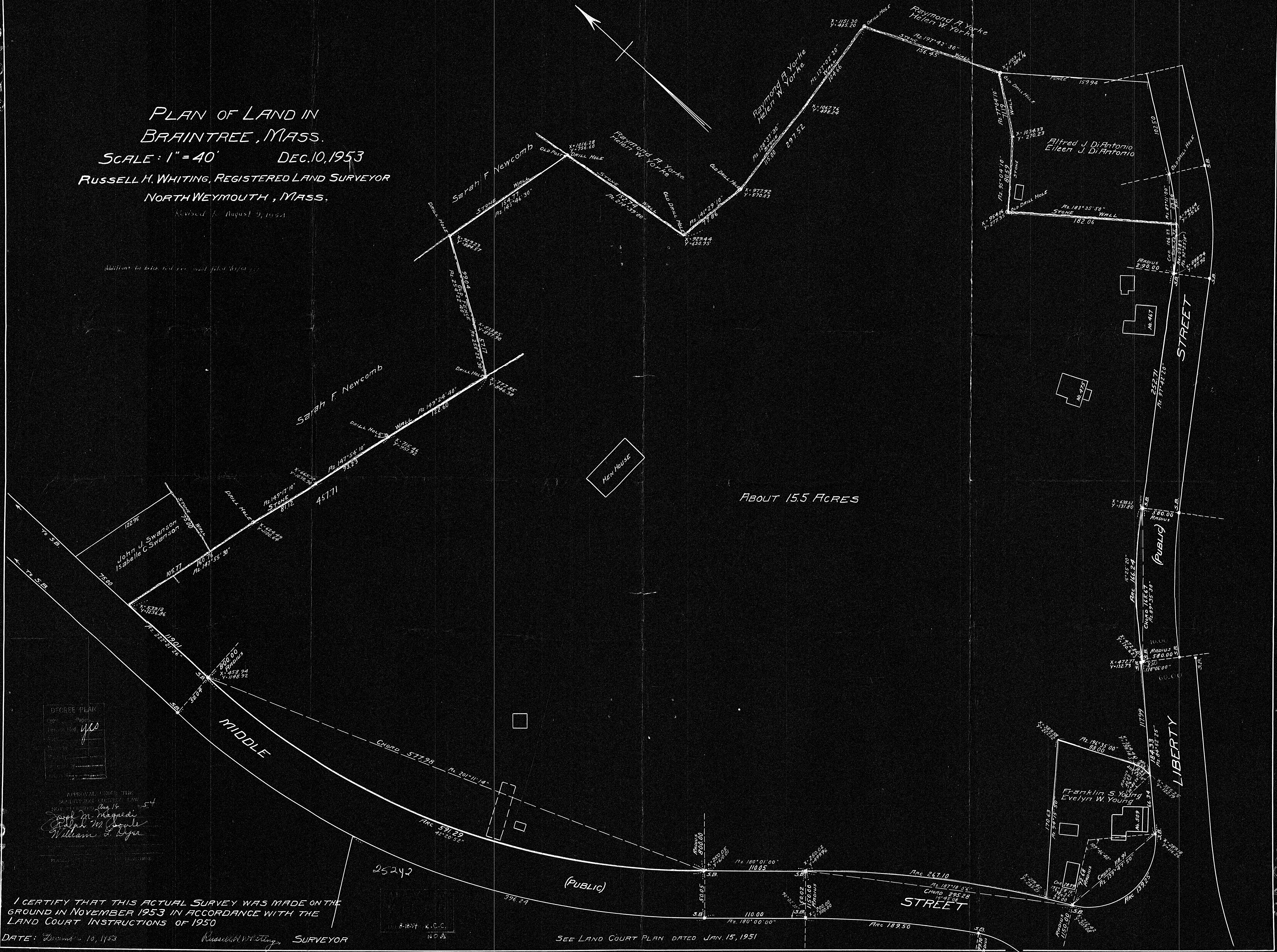
SCALE: 1" = 40' DEC. 10, 1953

RUSSELL H. WHITING, REGISTERED LAND SURVEYOR

NORTH WEYMOUTH, MASS.

Revised to August 9, 1954

Modifications in black, red, etc., and filed before this



DEGREE PLAN

DATE	1953
BY	RHW
FOR	15.5 ACRES
IN	15.5 ACRES
OF	15.5 ACRES
TO	15.5 ACRES
FROM	15.5 ACRES
BY	RHW
FOR	15.5 ACRES
IN	15.5 ACRES
OF	15.5 ACRES
TO	15.5 ACRES
FROM	15.5 ACRES

APPROVAL UNDER THE
SOLUTIONS ACT
1945
By the Registrar
Joseph M. Magaldi
Gerald M. Magaldi
William S. Dyer

I CERTIFY THAT THIS ACTUAL SURVEY WAS MADE ON THE
GROUND IN NOVEMBER 1953 IN ACCORDANCE WITH THE
LAND COURT INSTRUCTIONS OF 1950

DATE: December 10, 1953
Russell H. Whiting, SURVEYOR

SEE LAND COURT PLAN DATED JAN. 15, 1951