



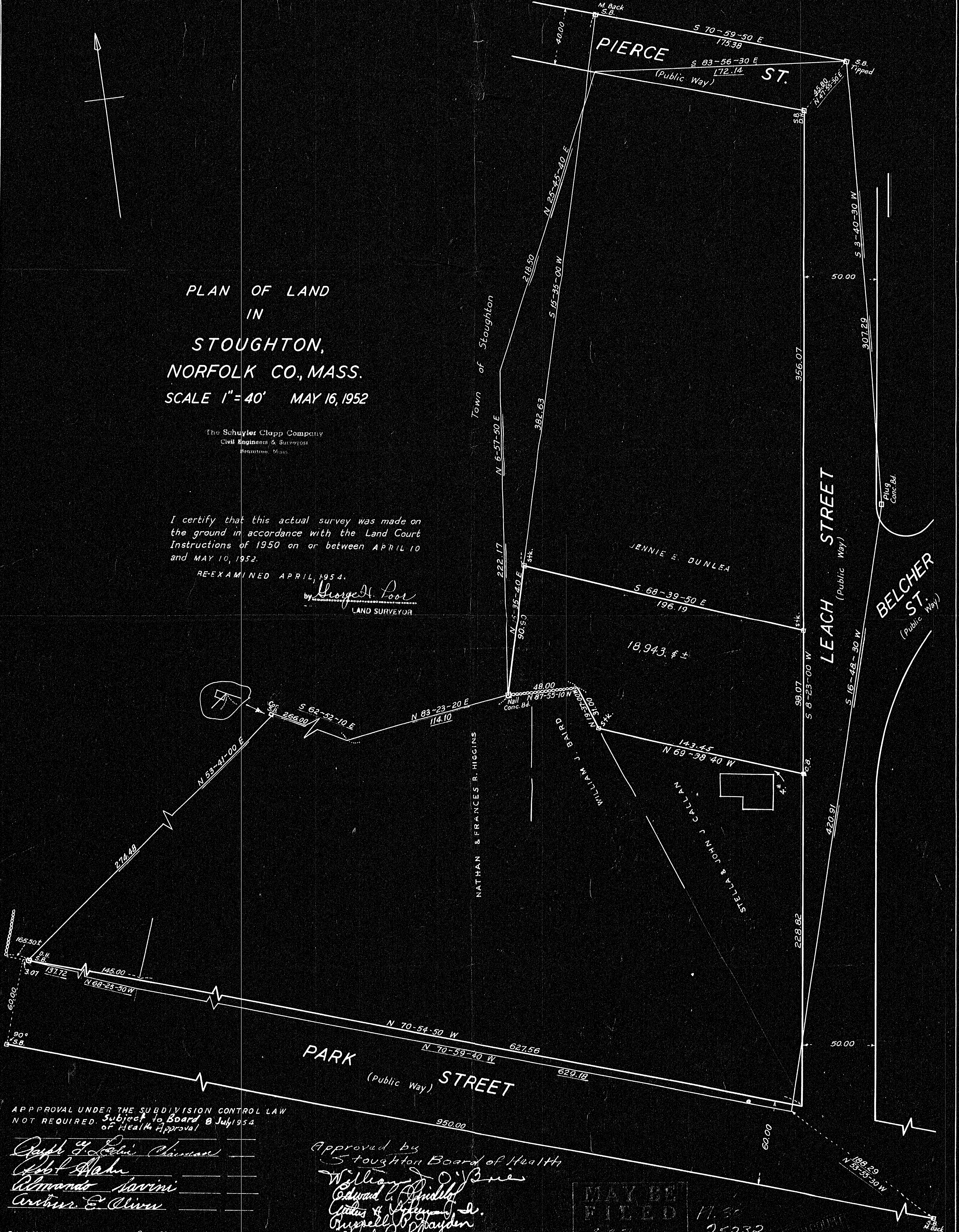
PLAN OF LAND  
IN  
STOUGHTON,  
NORFOLK CO., MASS.  
SCALE 1" = 40' MAY 16, 1952

The Schuyler Clapp Company  
Civil Engineers & Surveyors  
Braintree, Mass.

I certify that this actual survey was made on  
the ground in accordance with the Land Court  
Instructions of 1950 on or between APRIL 10  
and MAY 10, 1952.

RE-EXAMINED APRIL, 1954.

by *George H. Poole*  
LAND SURVEYOR



APPROVAL UNDER THE SUBDIVISION CONTROL LAW  
NOT REQUIRED. Subject to Board of Health Approval

*Joseph J. Lavin* Chairman  
*Robert W. Hahn*  
*Alvando Savini*  
*Arthur E. Oliver*

PLANNING BOARD of Stoughton

Approved by  
Stoughton Board of Health  
*William J. O'Brien*  
*Edward L. Smith*  
*Charles J. Stoughton*  
*Russell B. Grayden*  
*Joseph E. Sullivan*  
July 13, 1954

MAY BE  
FILED

11.30  
25032

JN 6457