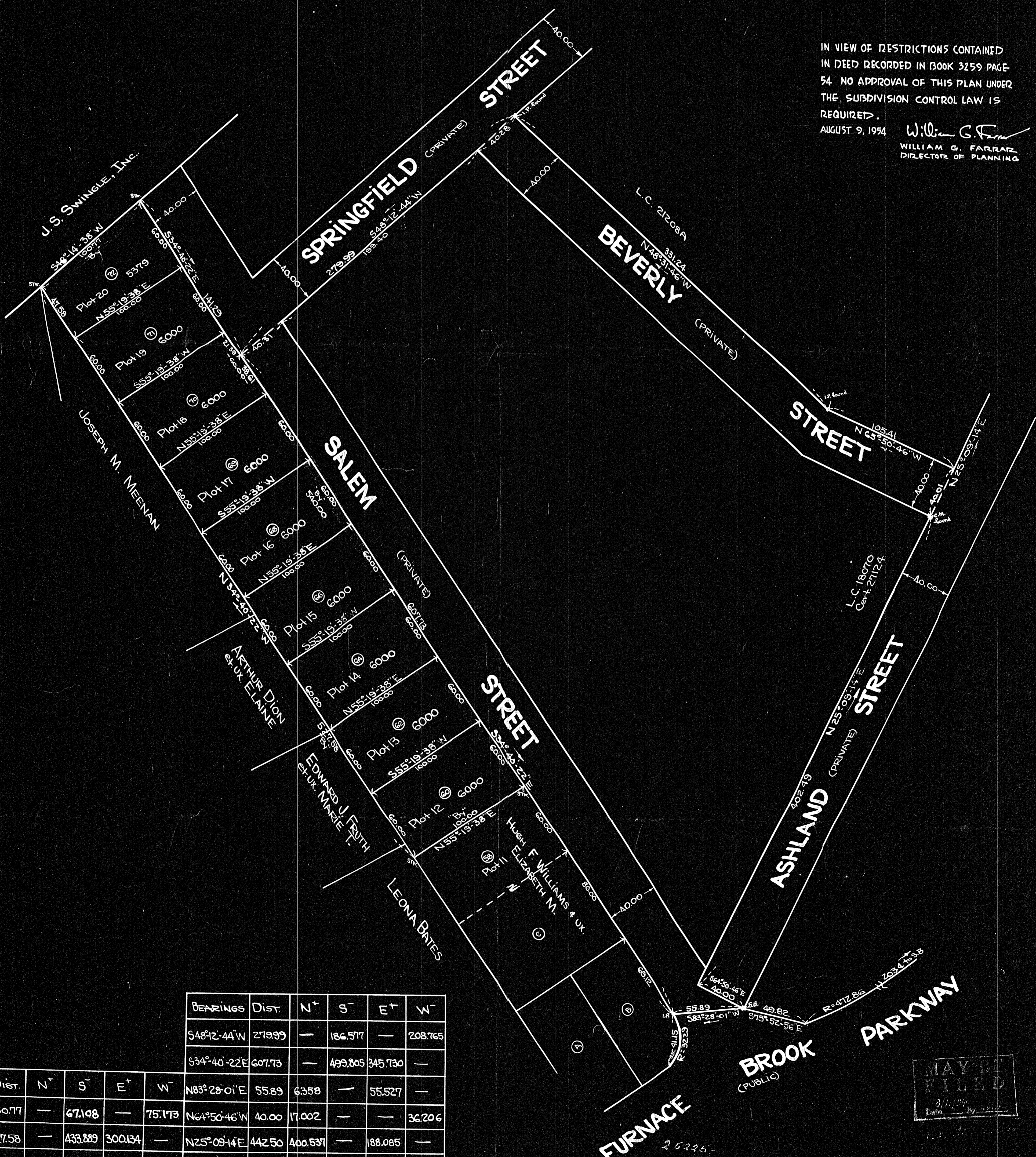




PLAN OF LAND IN
QUINCY, MASS...
 Scale 1"=40' July 15, 1954
 L. W. DeCELLE & SONS - SURVEYORS
 QUINCY & RANDOLPH

IN VIEW OF RESTRICTIONS CONTAINED
 IN DEED RECORDED IN BOOK 3259 PAGE
 54. NO APPROVAL OF THIS PLAN UNDER
 THE SUBDIVISION CONTROL LAW IS
 REQUIRED.
 AUGUST 9, 1954 *William G. Farrar*
 WILLIAM G. FARRAR,
 DIRECTOR OF PLANNING



BEARING	DIST.	N ⁺	S ⁻	E ⁺	W ⁻	
S48°12'44"W	279.99	—	186.577	—	208.765	
S34°40'22"E	607.73	—	499.805	345.730	—	
N83°28'01"E	55.89	6.358	—	55.527	—	
S48°14'38"W	100.77	—	67.108	—	75.173	
N64°50'46"W	40.00	17.002	—	—	36.206	
S34°40'22"E	527.58	—	433.889	300.134	—	
N25°09'14"E	442.50	400.537	—	188.085	—	
N55°19'38"E	100.00	56.888	—	82.241	—	
N65°50'46"W	105.41	43.132	—	—	96.181	
N34°40'22"W	540.00	444.103	—	307.199	—	
N48°31'46"W	331.24	219.358	—	—	248.196	
TOTALS		500.991	500.997	382.375	382.372	TOTALS
		686.387	686.382	589.342	589.348	

MAY BE
 FILED
 8/11/54
 Quincy, Mass.

I hereby certify that this survey was
 made on the ground in accordance with
 Land Court Instructions of 1950
 on or between 2 July & 12 July 1954.
 July 15, 1954 *L. W. DeCelle, Jr.*
 Surveyor. 25225
 Quincy, Mass.